

# KLL01 - Statistics Summation

1044 GstarCAD Malaysia April 5, 2017 [Express Tools](#) 0 4293

This function sums up selected text or mtext.

The selected text can not contain any other characters behind the number and the selected mtext can only contain a row of numerical values without blank spaces. Figures with prefix can also make statistics Summation and the system will summate them by different prefixes.

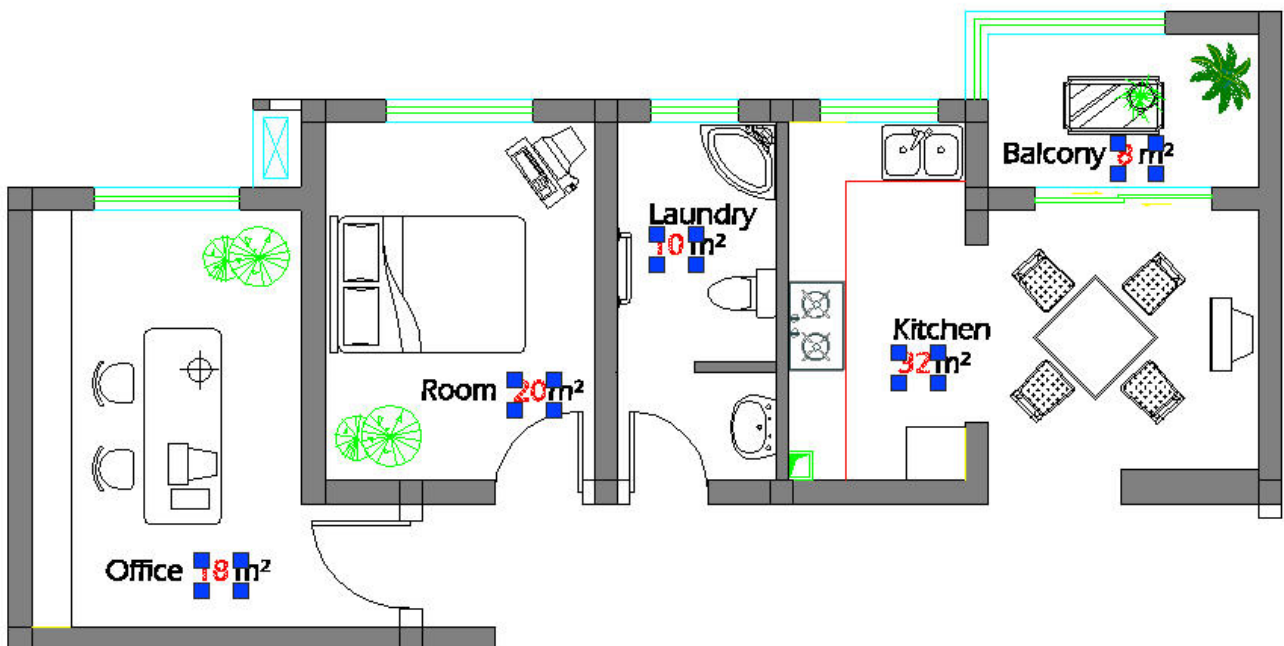
Menu: Express tools>Modify>Statistics Summation

Menu: Text>Statistics Summation

Command Entry: KLL01

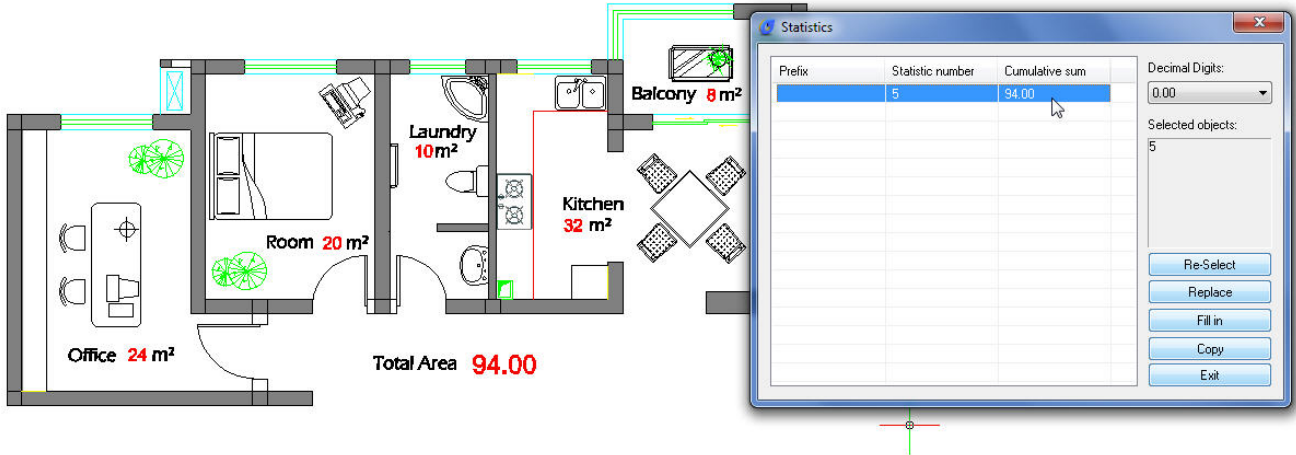
Start the command and the command line prompts as follows:

**Select objects** : Select Text or Mtext numerical value



In the Statistics dialog box, you can see the cumulative sum from the selected text numerical values. You can also re-select, replace, copy text numerical value again plus fill-in (show) the cumulative sum in any

point of your current drawing.



Online URL: <https://www.gstarcad.com.my/knowledge/article/kl101-statistics-summation-1044.html>