

LOCKUP - Drawing Lock

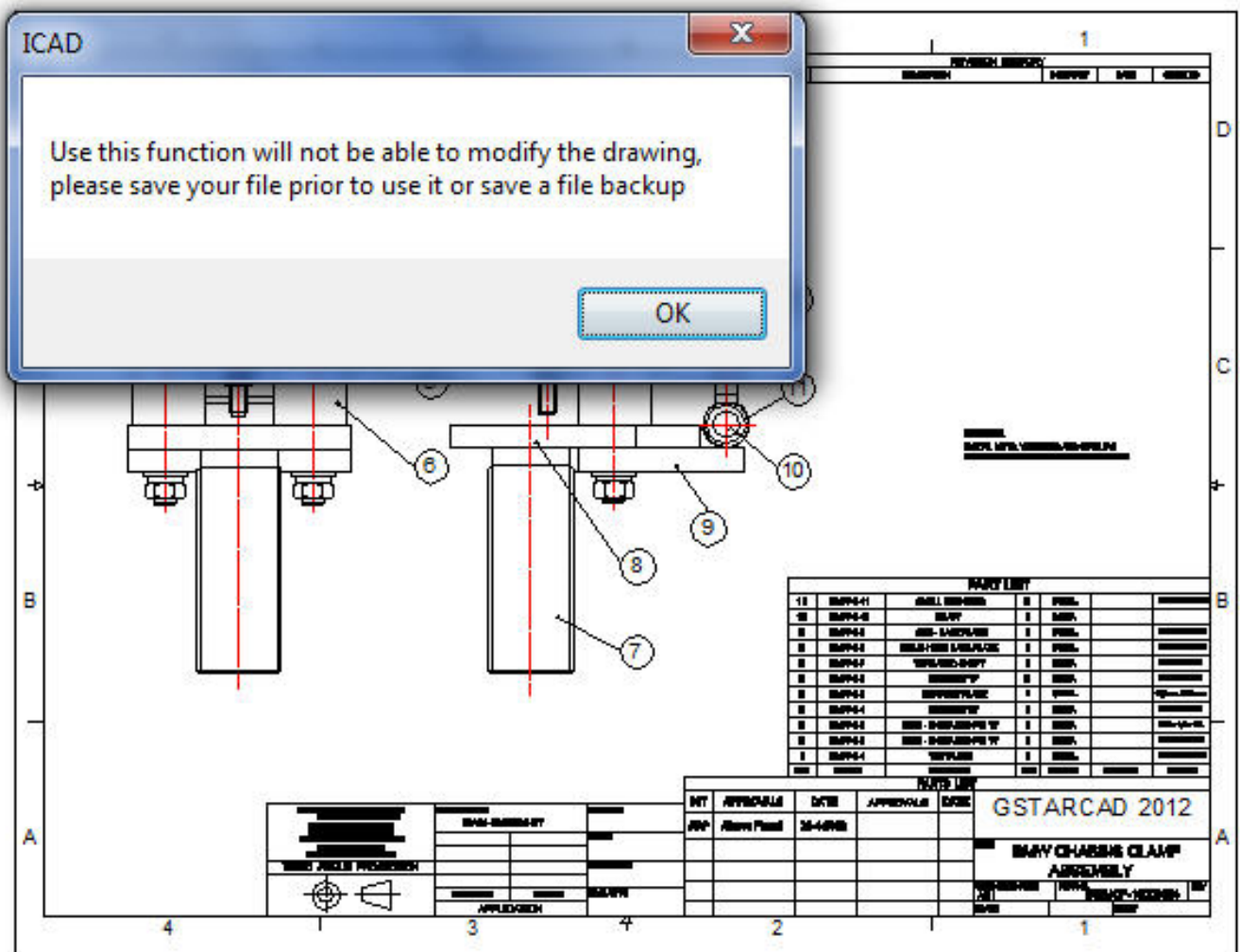
1047 GstarCAD Malaysia April 5, 2017 [Express Tools](#) 0 4411

Sometimes a designer sends drawings to other people, but doesn't want others to modify the drawings. The "Drawing Lock" function can turn the drawing into a whole block. You can't explode it or modify the objects of the original drawing. It is a good way to prevent others from modifying the drawing.

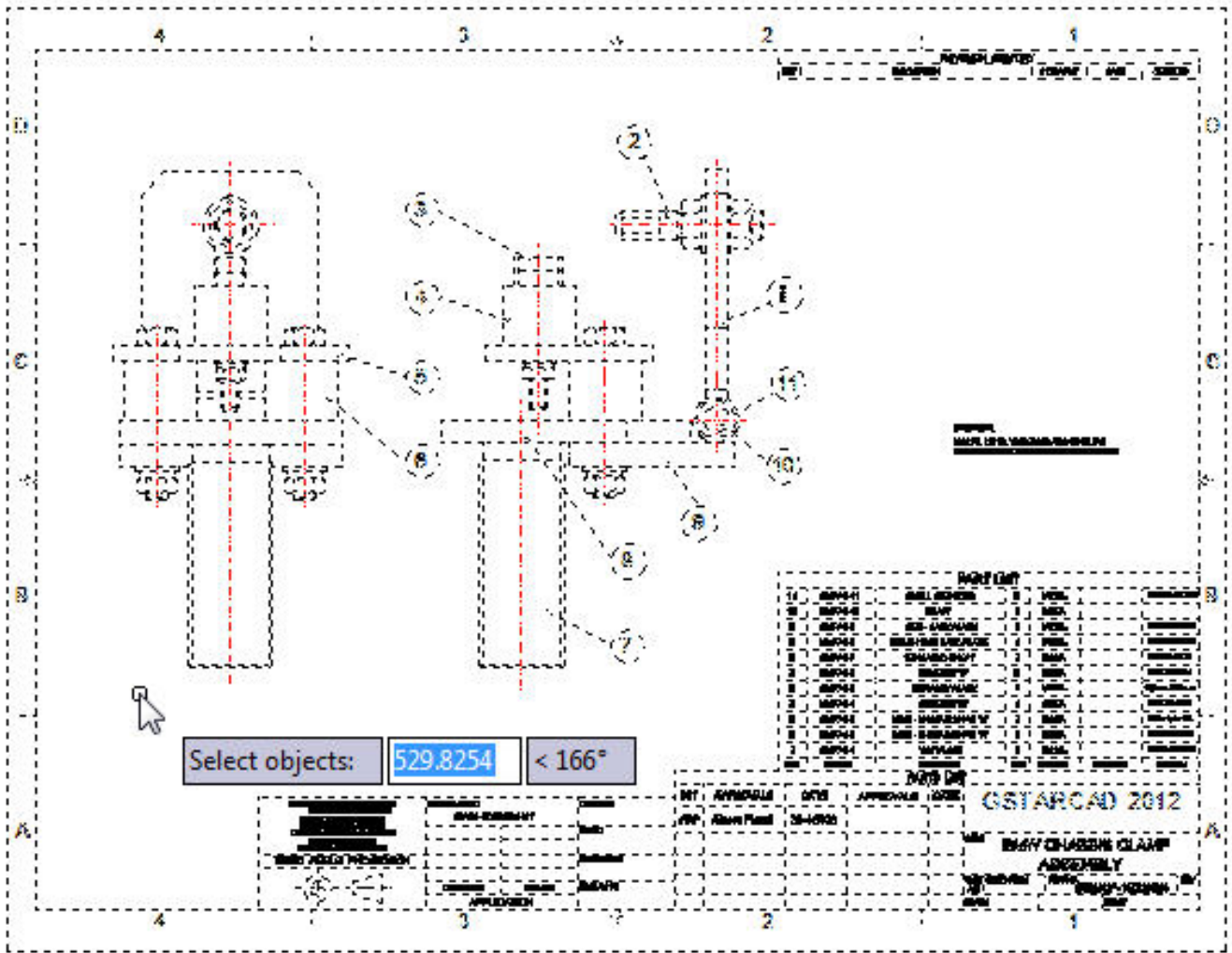
Menu: Express tools>Drawing Tools>Drawing Lock

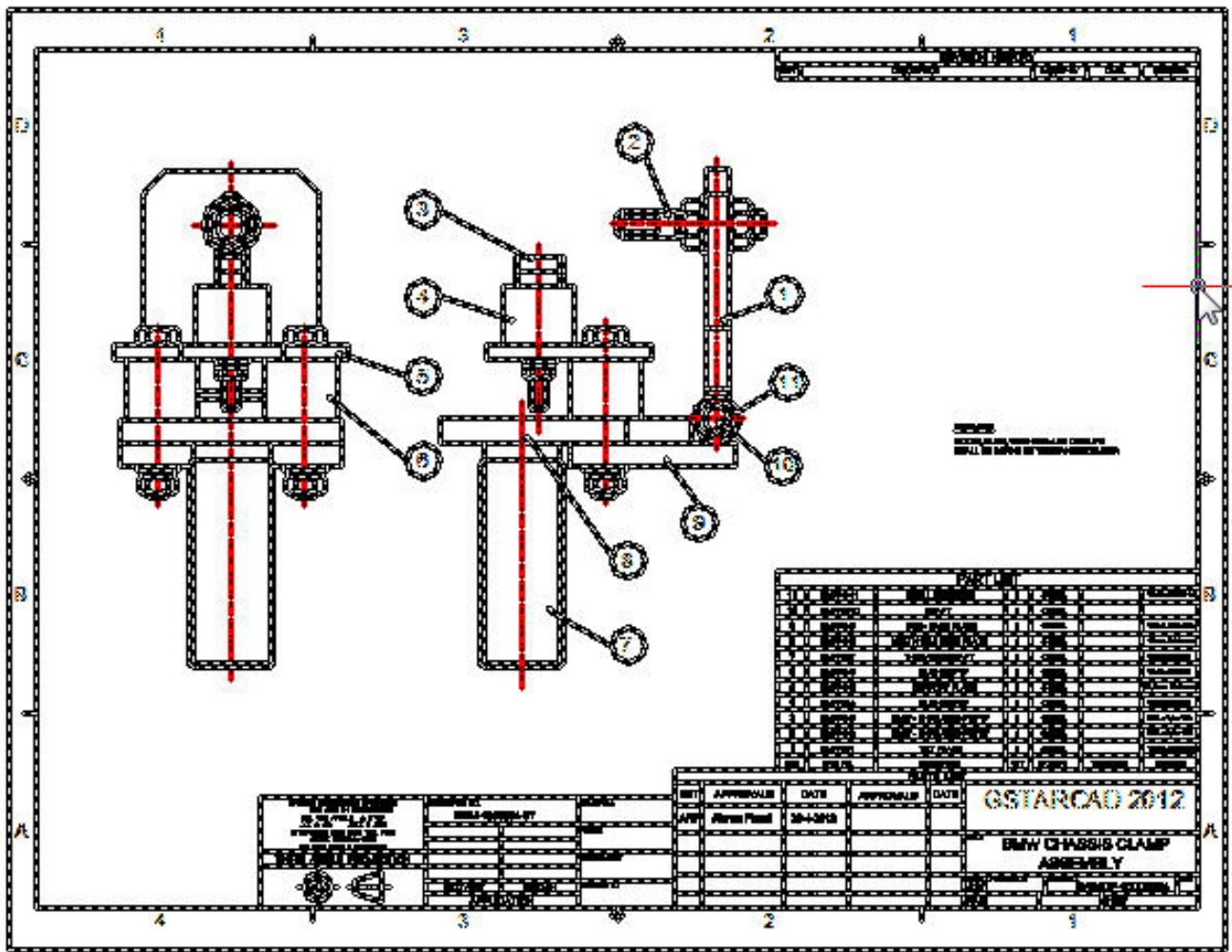
Command Entry: LOCKUP

Once the command is started, the follow wizard will be displayed:



Select objects: Select all the objects in the current drawing to be locked and press Enter.





Please save your drawing before using this function, because the locked drawing can't be modified.

Online URL: <https://www.gstarcad.com.my/knowledge/article/lockup-drawing-lock-1047.html>