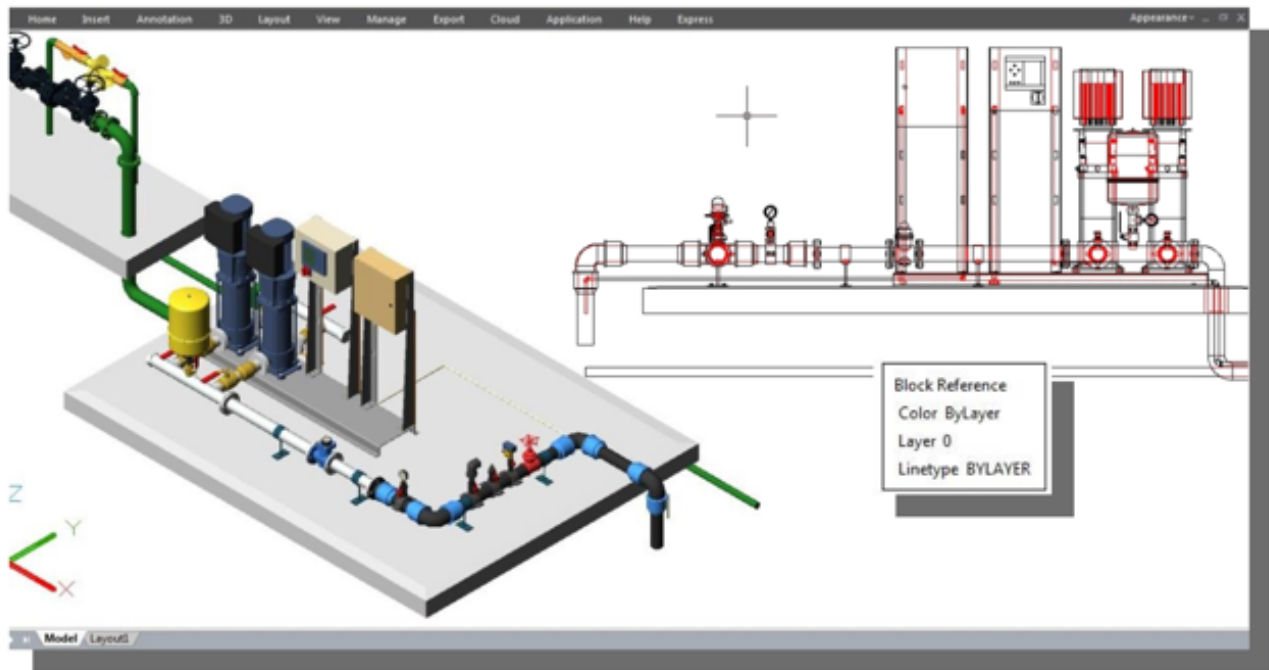


FLATSHOT Command

1179 GstarCAD Malaysia June 30, 2021 [CAD Commands](#) 0 5127

With FLATSHOT command you can create a 2D representation of all 3D objects based on the current view. The edges of all 3D solids, surfaces, and meshes are projected line-of-sight onto a plane parallel to the viewing plane. The 2D representations of these edges are inserted as a block on the XY plane of the UCS. This block can be exploded for additional changes.



Flatshot Dialog Box

Destination : Controls where the flattened representation is created.

Insert As New Block : Specifies to insert the flattened representation as a block in the current drawing.

Replace Existing Block : Replaces an existing block in the drawing with the newly created block.

Select Block : Closes the dialog box temporarily while you select the block you are replacing in the drawing. When you finish selecting the block, press Enter to re-display the Flatshot dialog box.

Block Selected / No Block Selected : Indicates whether a block has been selected.

Export to a File : Saves the block to an external file.

Foreground Lines : Contains controls for setting the color and linetype of lines that are not obscured in the flattened view.

Color : Sets the color of lines that are not obscured in the flattened view.

Linetype : Sets the linetype of lines that are not obscured in the flattened view.

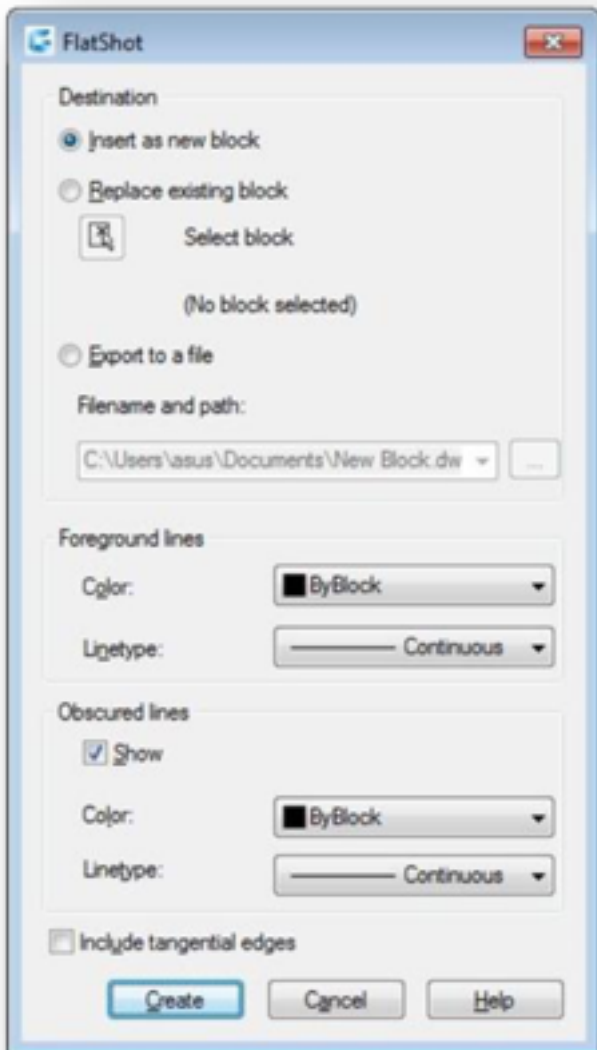
Obscured Lines : Controls whether lines that are obscured in drawing are displayed in the flattened view, and sets the these obscured lines.

Show : Controls whether obscured lines are shown in the representation. When selected, the 2D flattened representation displays lines hidden by other objects.

Color : Sets the color of lines that lie behind geometry in the

Linetype: Sets the linetype of lines that lie behind geometry in flattened view.

Include Tangential Lines : Creates silhouette edges for curved surfaces. the flattened view.



Technical Demo - With flatshot command you can create a 2D representation of all 3D objects based on

the current view much easier.

Online URL: <https://www.gstarcad.com.my/knowledge/article/flatshot-command-1179.html>