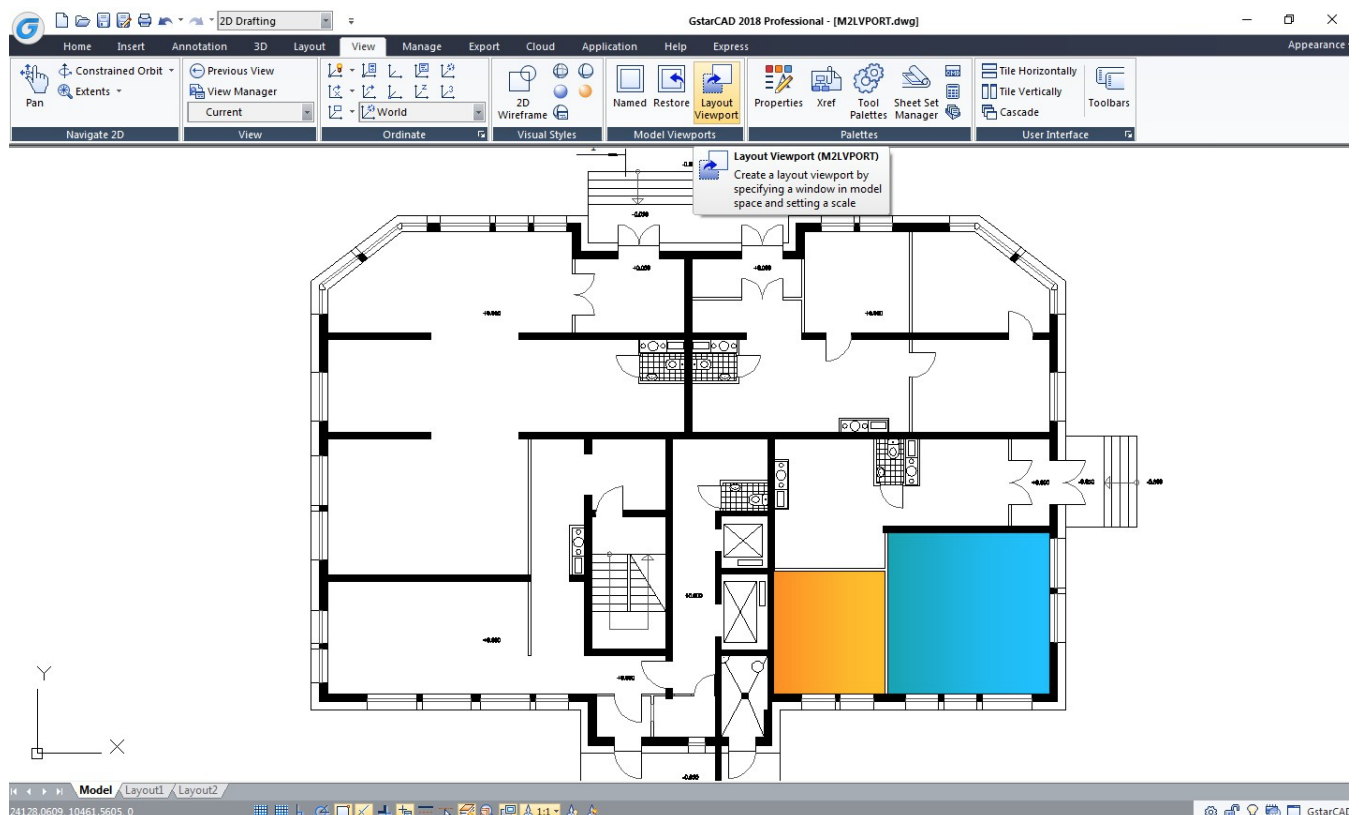


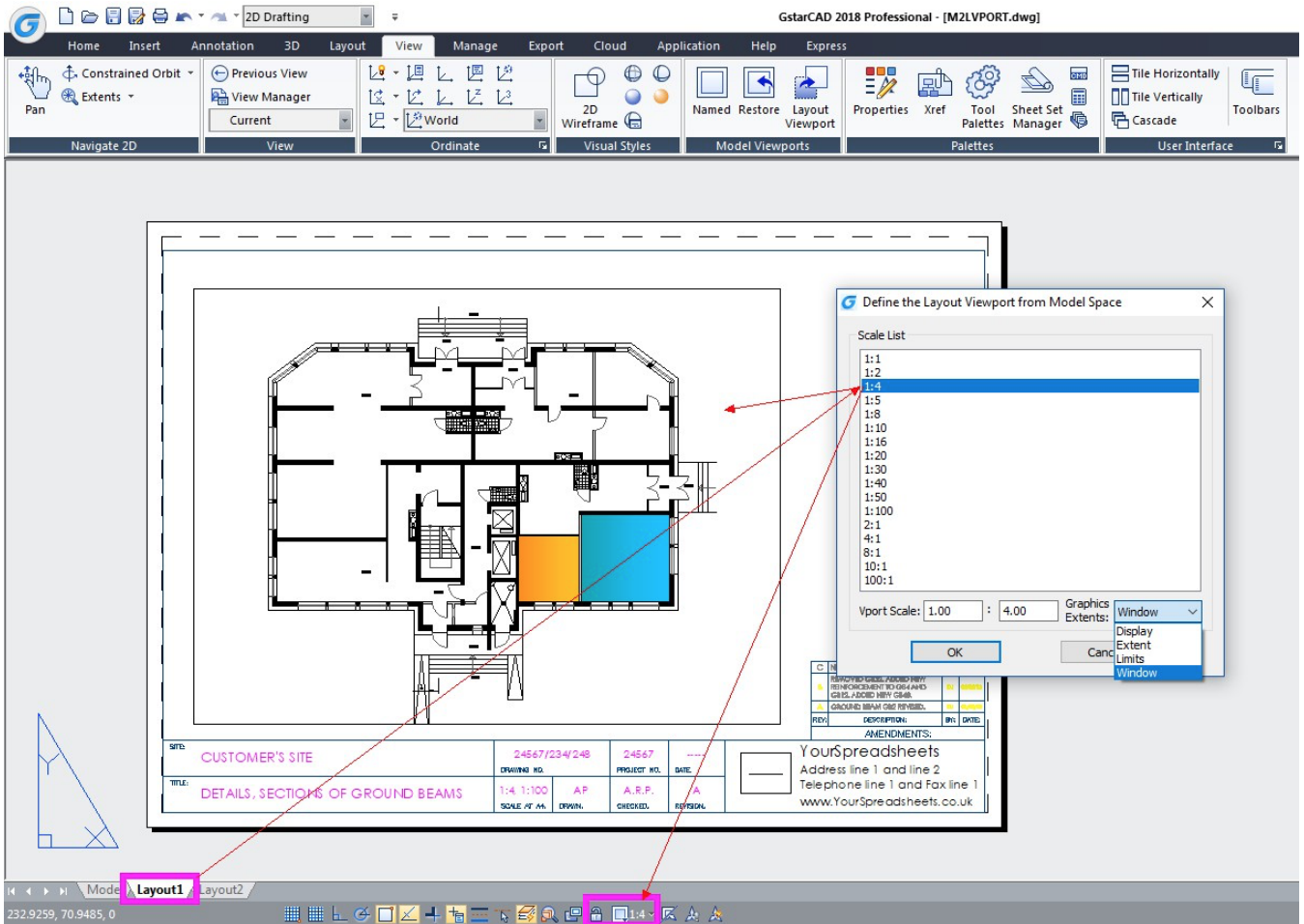
M2LVPORT Command

1240 GstarCAD Malaysia June 30, 2021 [Unique function](#) 0 4595

Command name: M2LVPORT

M2LVPORT command creates a viewport on layout space by selecting objects in the model space. And then calculate the viewport size according to the set scale and locate the viewport in the layout space. You can quickly create and set a viewport of the current drawing. This command can be quickly invoked on the right-click menu of the model/layout tab.





Online URL: <https://www.gstarcad.com.my/knowledge/article/m2lvport-command-1240.html>