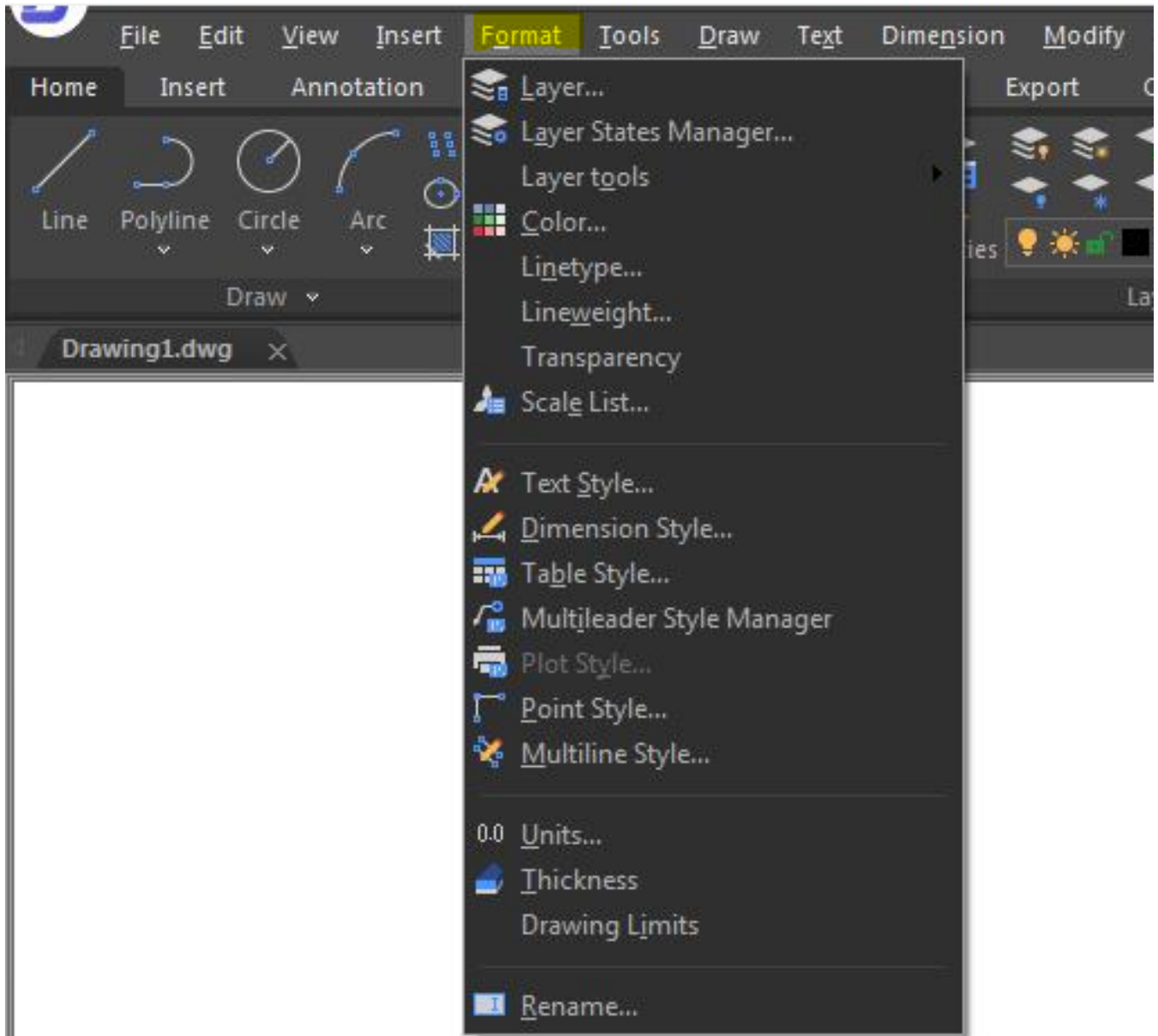


Menus and Shortcut Menus

1299 GstarCAD Malaysia April 15, 2022 [Getting started](#) 0 4154

Menus

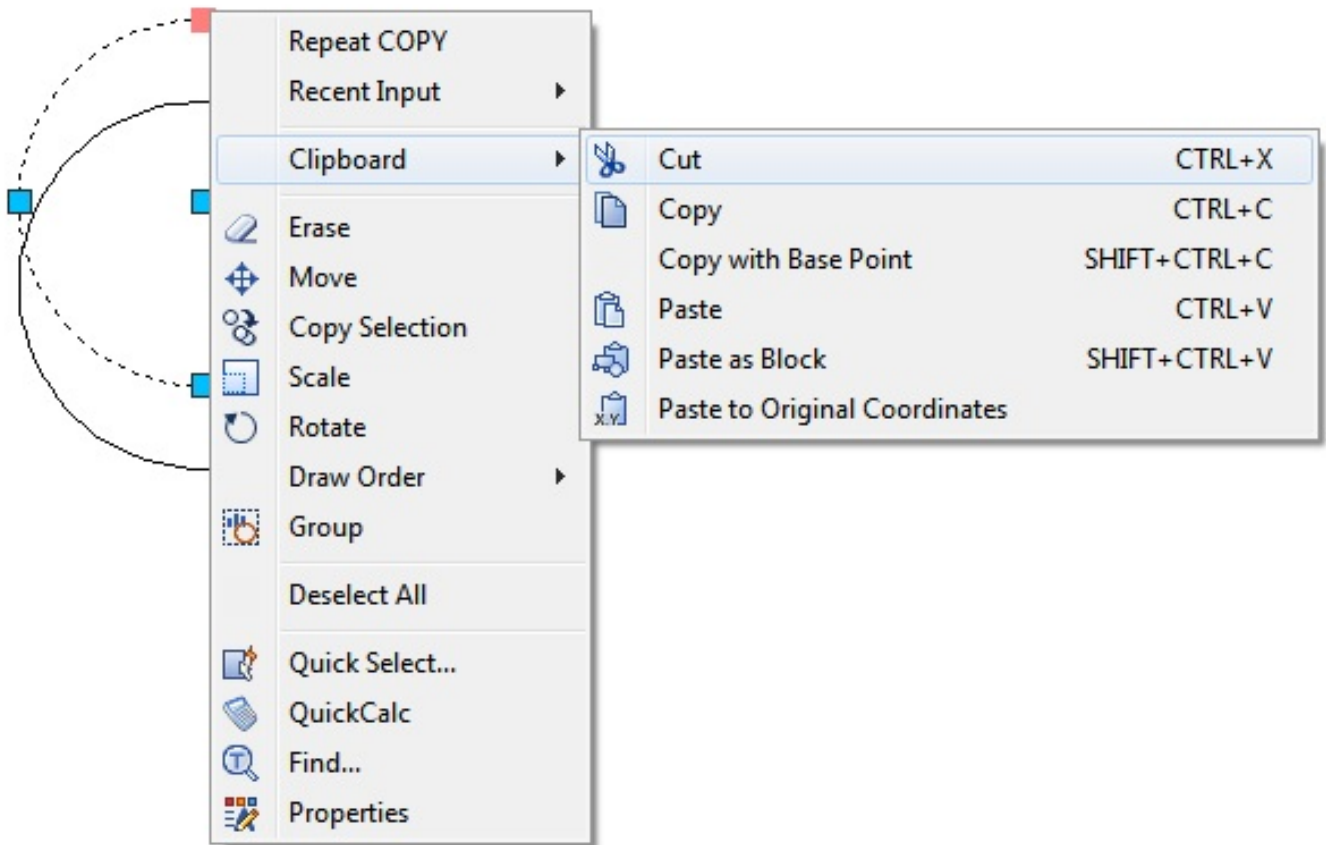
Menus can be accessed through the menu bar on the **main menu** bar.



*In the "File" tab of the **Options** dialog box, you can set the save path for menu files.*

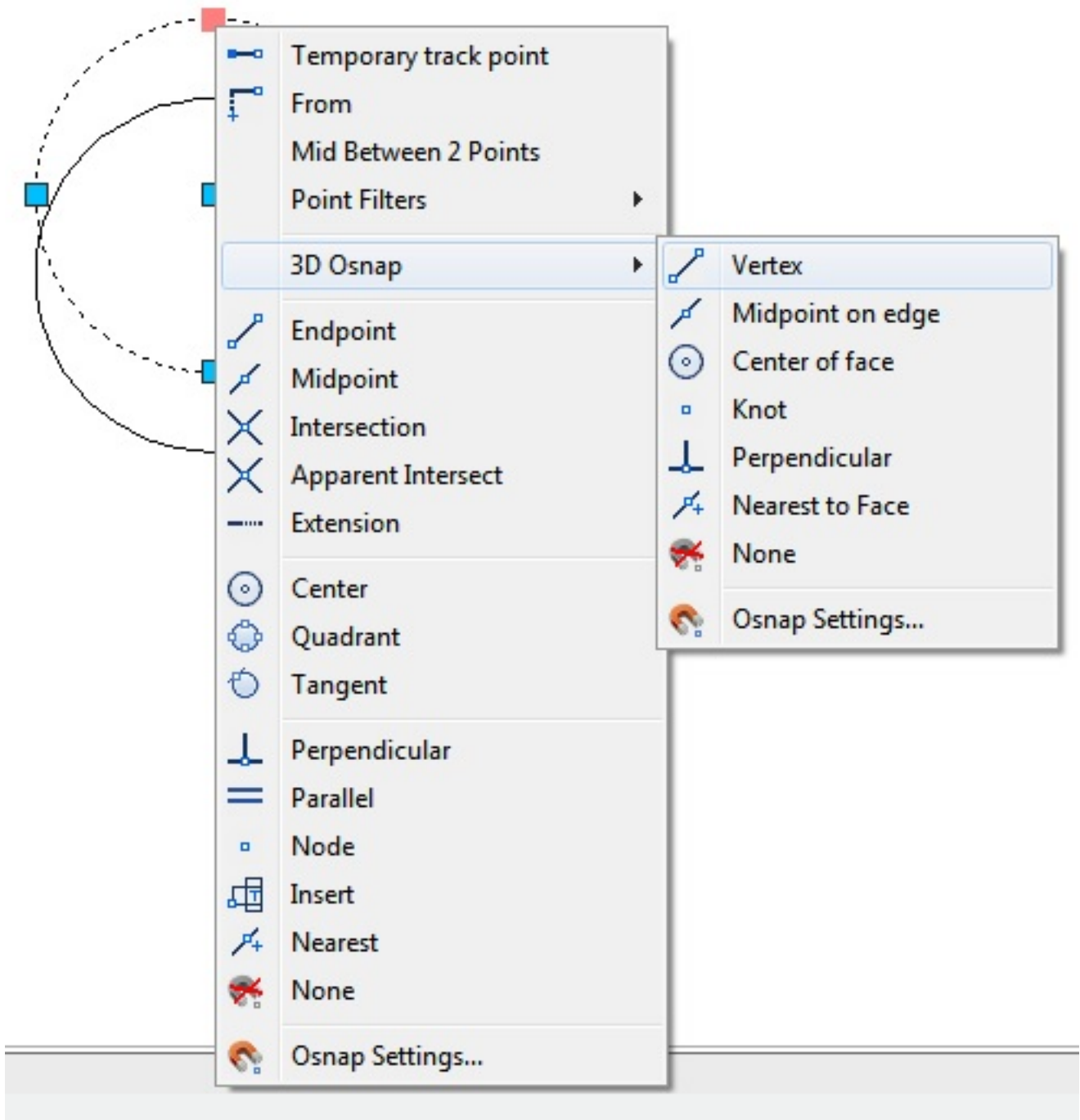
Shortcut Menus

You can get quick access to specific commands via the Shortcut menus. When you right-click an entity, a toolbar, the status bar, the Model tab name, or a Layout tab name, a shortcut menu will be displayed. Depending on what you clicked, different options will be presented in the shortcut menu.



With the shortcut menu, which will be displayed by right-clicking a toolbar, you can toggle the command bar, status bar, and other toolbars on and off. The program will display a shortcut menu with commands to modify entities if you select one or more entities and then right-click.

To display a shortcut menu of object snap, press and hold down the Shift key, and then right-click anywhere within the drawing window.



Related tutorial video:

- [Ribbon](#) 00:33
- [Toolbars](#) 00:47

- [Menus and Shortcut Menus](#) 00:47
 - [View](#) 01:43
 - [Extrude](#) 01:44
 - [Visual Style](#) 01:47
 - [Enter command on the command line](#) 01:50
 - [Cleanscreenoff](#) 02:09
 - [Cleanscreenon](#) 02:09
 - [Cleanscreenstate system variable](#) 02:09
 - [Status bar related setting](#) 02:21
 - [Dynamic input](#) 02:28
 - [Options command](#) 02:39
-

- [Status bar related setting](#) 00:26
 - [Line command](#) 00:38
 - [Draw Lines](#) 00:38
 - [Menus and Shortcut Menus](#) 00:43
 - [Object snap](#) 01:05
 - [Osnap command](#) 01:12
 - [Draw circles](#) 01:28
 - [Circle command](#) 01:28
 - [Polar](#) 03:40
-

- [Dimstyle command](#) 00:27
- [Dimlinear command](#) 02:29
- [Menus and Shortcut Menus](#) 02:41
- [Dimaligned command](#) 02:51
- [Dimangular command](#) 03:11
- [Dimarc command](#) 03:19
- [Dimradius command](#) 03:31
- [Dimdiameter](#) 03:41
- [Dimcontinue command](#) 04:08
- [Dimbaseline command](#) 04:46
- [Dimcenter](#) 05:07
- [QDIM command](#) 05:30

- [Menus and Shortcut Menus](#) 07:05
 - [Properties command](#) 07:08
 - [Propertiesclose command](#) 07:08
 - [Dimbreak command](#) 07:43
 - [Menus and Shortcut Menus](#) 08:34
 - [Dimreassociate command](#) 08:52
 - [Dimtoffset command](#) 09:19
 - [Dimregen command](#) 09:29
-

- [Dimstyle command](#) 00:27
 - [Dimlinear command](#) 02:29
 - [Menus and Shortcut Menus](#) 02:41
 - [Dimaligned command](#) 02:51
 - [Dimangular command](#) 03:11
 - [Dimarc command](#) 03:19
 - [Dimradius command](#) 03:31
 - [Dimdiameter](#) 03:41
 - [Dimcontinue command](#) 04:08
 - [Dimbaseline command](#) 04:46
 - [Dimcenter](#) 05:07
 - [QDIM command](#) 05:30
 - [Menus and Shortcut Menus](#) 07:05
 - [Properties command](#) 07:08
 - [Propertiesclose command](#) 07:08
 - [Dimbreak command](#) 07:43
 - [Menus and Shortcut Menus](#) 08:34
 - [Dimreassociate command](#) 08:52
 - [Dimtoffset command](#) 09:19
 - [Dimregen command](#) 09:29
-

- [Wipeout command](#) 00:37
- [Selectioncycling command](#) 00:54
- [Menus and Shortcut Menus](#) 01:10
- [Block command](#) 01:12
- [Revcloud command](#) 02:05

-
- [View command](#) 00:25
 - [Menus and Shortcut Menus](#) 00:37
 - [Unisolateobjects command](#) 00:37
 - [Qnew command](#) 00:48
 - [Status bar related setting](#) 00:52
 - [Box command](#) 01:03
 - [Union command](#) 01:50
 - [Xedges command](#) 02:03
 - [Filletedge command](#) 02:08
 - [Vscurrent command](#) 02:45
 - [Extrude command](#) 03:27
 - [Rectang command](#) 04:22
 - [Move command](#) 04:45
 - [Line command](#) 05:06
 - [ARC command](#) 05:16
 - [Trim command](#) 05:23
 - [Join command](#) 05:46
 - [Convtsurface command](#) 06:35
 - [Slice command](#) 06:51
 - [Solidedit](#) 08:32

Above video sources from [TUTORIAL - GETTING STARTED WITH GSTARCAD](#), enrol now for free.

Online URL: <https://www.gstarcad.com.my/knowledge/article/menus-and-shortcut-menus-1299.html>