

STARTUP system variable.

1843 GstarCAD MY /KW August 26, 2021 [Setting / Configuration, System Variables](#) 0 1152

Function Description:

The **STARTUP** system variable is used to control the display content when starting applications or opening new drawings.

Type : Integer

Saved in : Registry

Initial value : 3

Range : 0,1,2,3

This system variable control whether to display Create New Drawing dialog box when using **NEW** or **QNEW** command to create new drawings. It also controls whether to display Startup dialog box when starting applications.

Specifying **FILEDIA** system variable to be 0, file dialog boxes are not displayed.

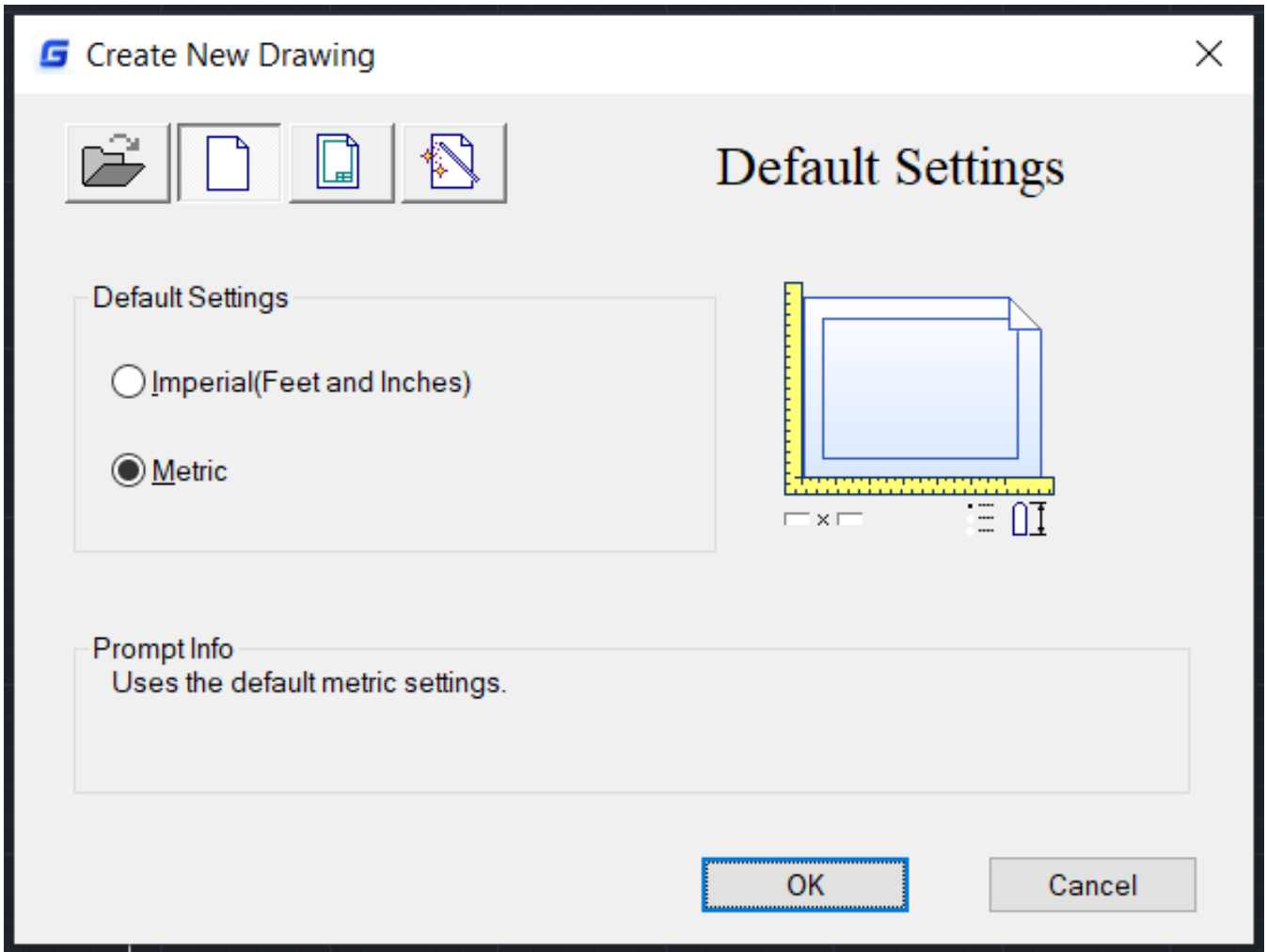
System Variable Value:

0 : start a drawing without defining settings

1 : display Startup or Create New Drawing dialog box

2 : display a new tab. If this tab is available in applications, display custom dialog box.

3 : display a new tab and pre-load ribbon when opening or creating a drawing.



Online URL: <https://www.gstarcad.com.my/knowledge/article/startup-system-variable-1843.html>