

AUTOLAYER command

1983 GstarCAD MY /KW August 3, 2021 [CAD Commands](#) 0 955

The **AUTOLAYER** command allows you to customize and predefine the associated layer of a command to streamline drafting workflow.

Command Access:

Command Name : AUTOLAYER

Function Description :

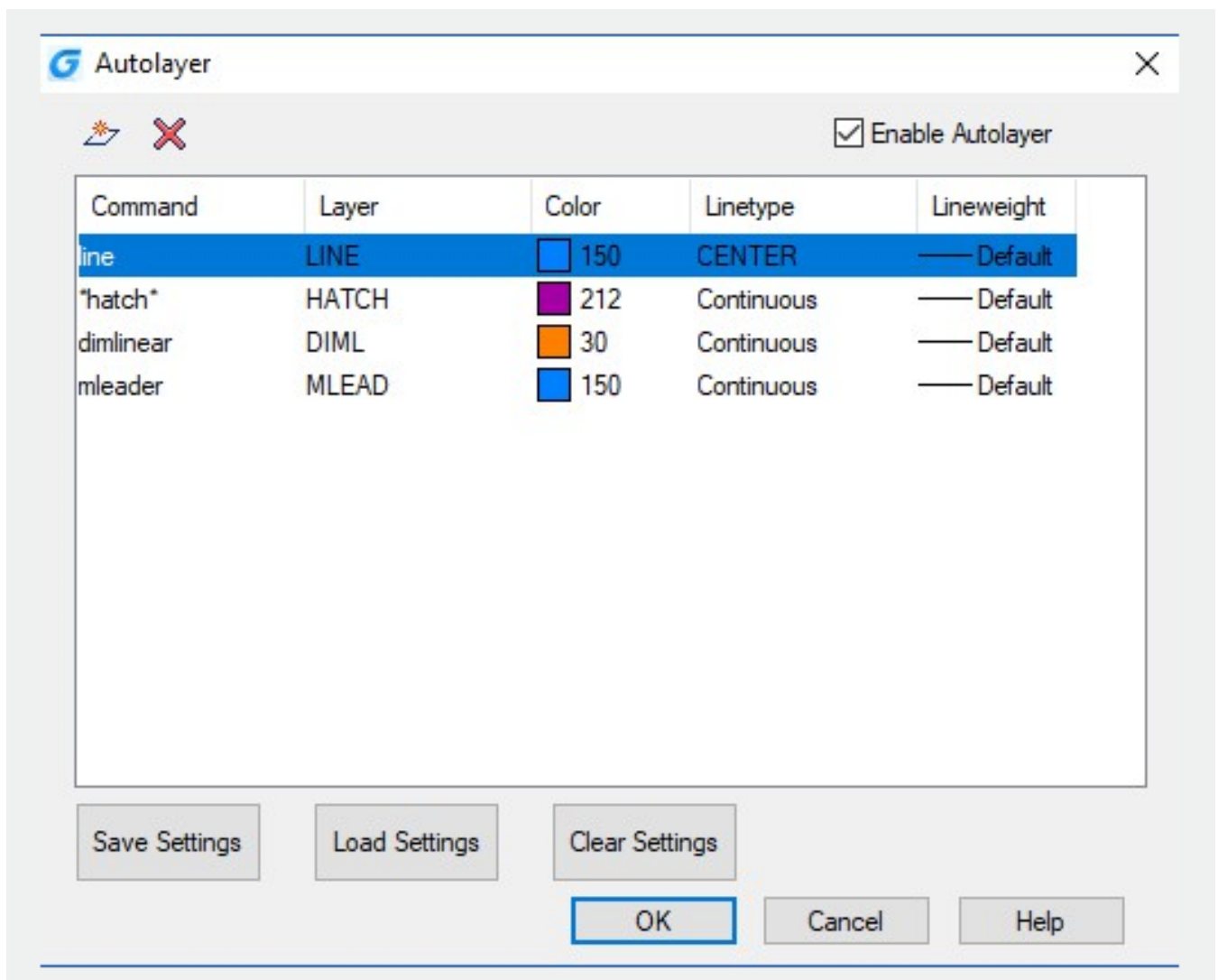
You can create as many layers as you want.

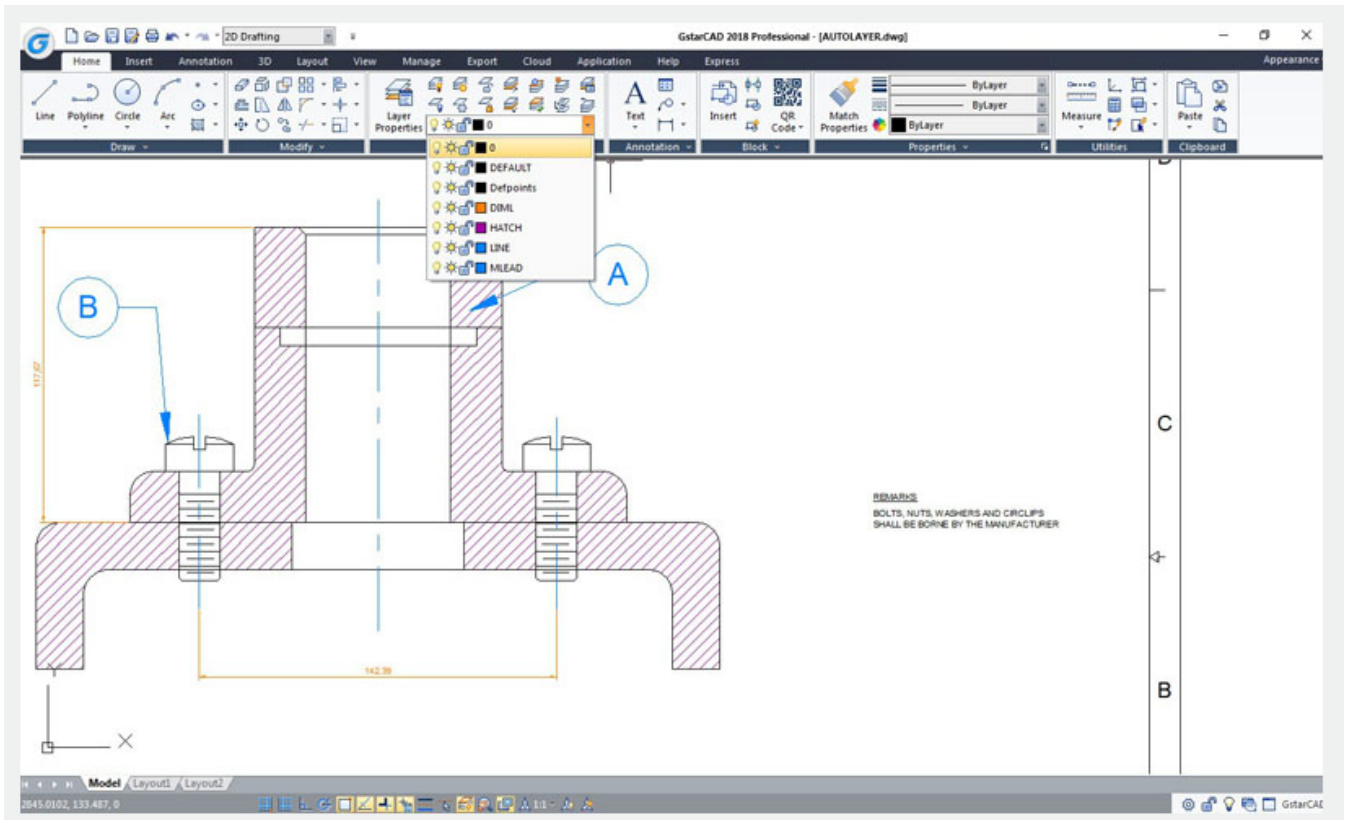
Each layer created must be a predefined command, which you can name its layer, select layer color, linetype and lineweight.

After you execute the predefined command, its layer will be generated automatically.

You can save, load and clear all layer settings from the AUTOLAYER dialog box.

You can enable or disable the AUTOLAYER option from the status bar.





Online URL: <https://www.gstarcad.com.my/knowledge/article/autolayer-command-1983.html>