

BESETTINGS command

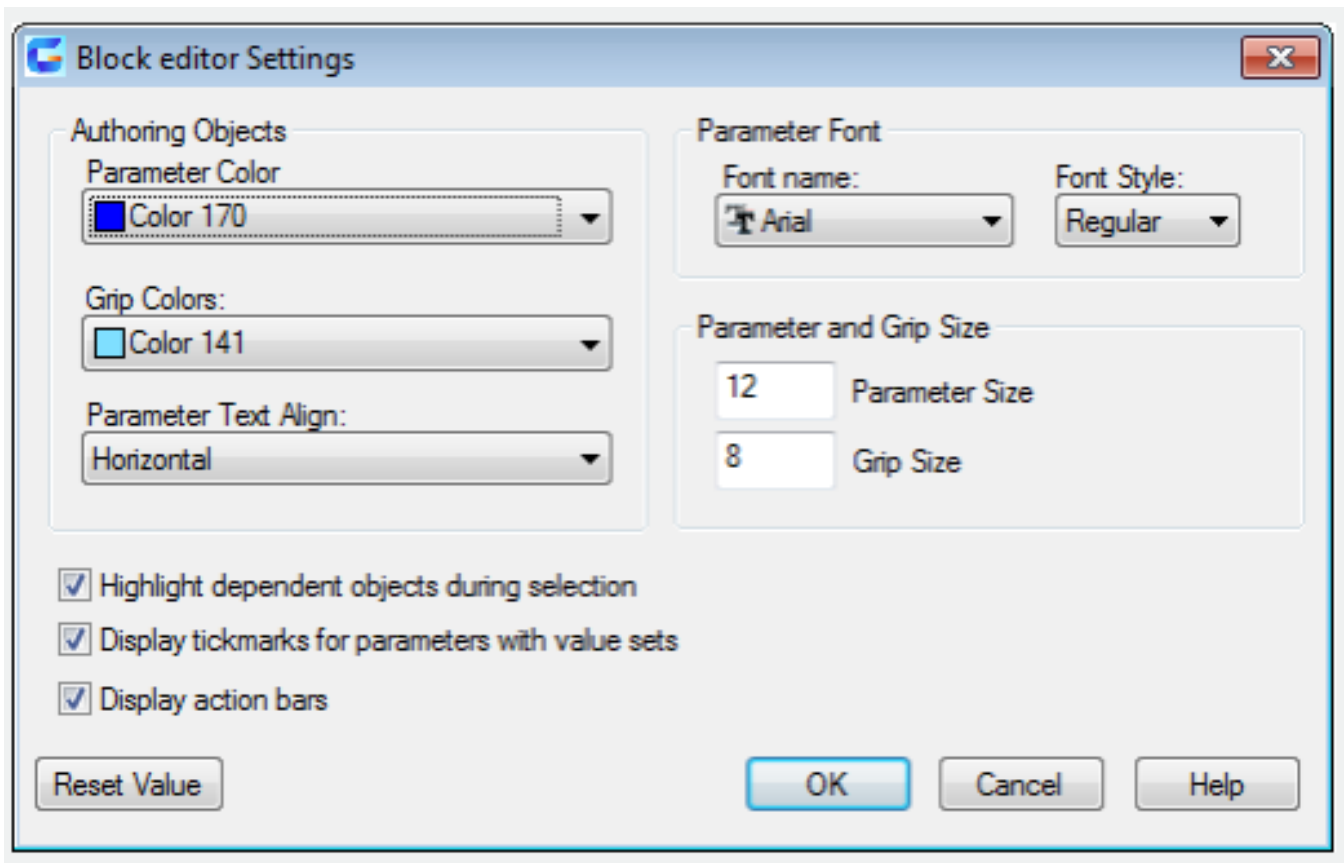
1998 GstarCAD MY /KW August 4, 2021 [CAD Commands](#) 0 849

The **BESETTINGS** command is used to display the "Block editor Settings" dialog box.

Command Access:

Command : BESETTINGS

Function Description:



Online URL: <https://www.gstarcad.com.my/knowledge/article/besettings-command-1998.html>