

BHATCH command

2000 GstarCAD MY /KW August 4, 2021 [CAD Commands](#) 0 835

The **BHATCH** command is used to fill the closed region or selected object by fill pattern or gradient fill.

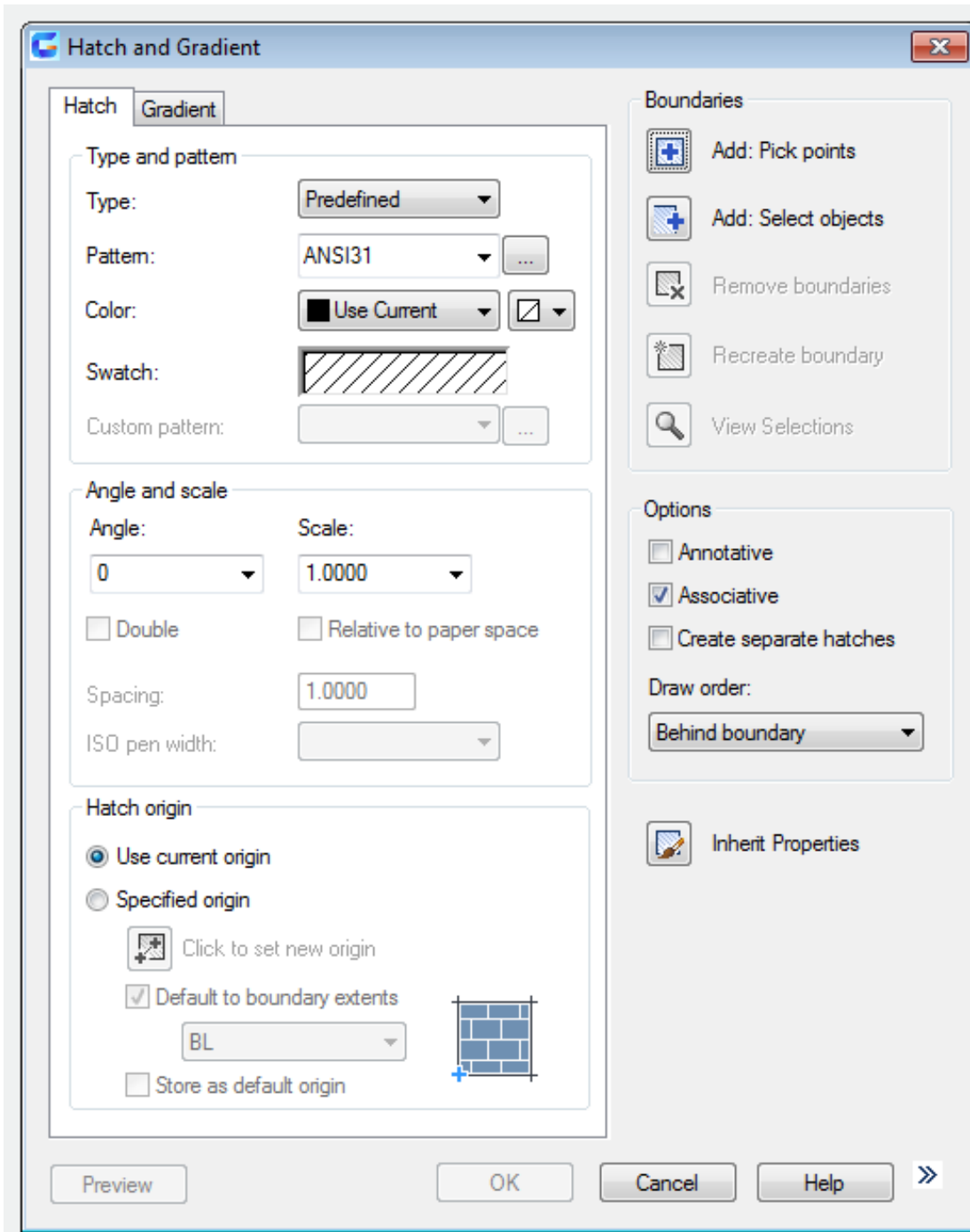
Command Access:

Ribbon : Home > Draw > Hatch...

Menu : Draw > Hatch

Command : BHATCH (display The Boundary Pattern Fill dialog box), -BHATCH (display command line prompts)

Function Description:



Inputting "-hatch" under the command prompt, it will display options.

Online URL: <https://www.gstarcad.com.my/knowledge/article/bhatch-command-2000.html>