

BLOCK command

2002 GstarCAD MY /KW April 15, 2022 [CAD Commands](#) 0 1642

The **BLOCK** command is used to create a block definition for specified object.

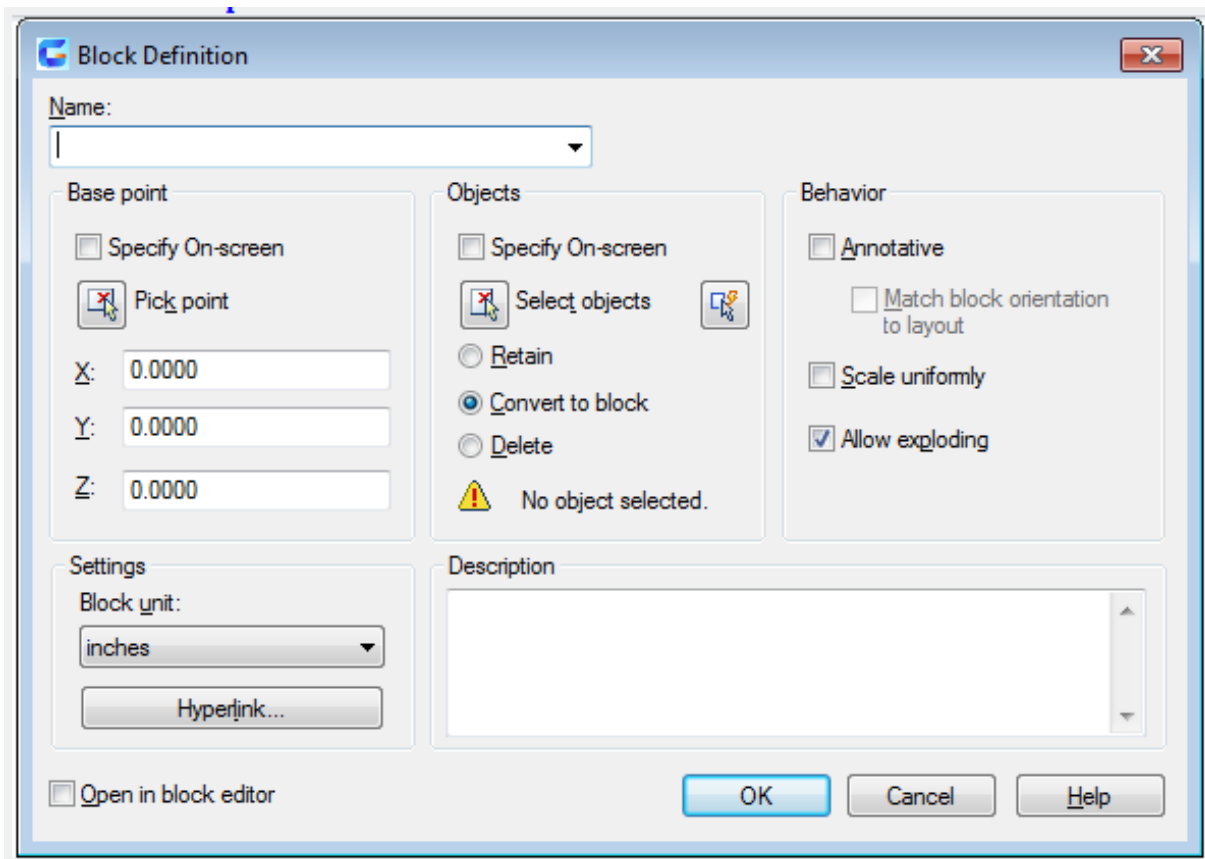
Command Access:

Ribbon : Home > Block > Make...

Menu : Draw > Block > Make...

Command : BLOCK (display Block Definition dialog box), -BLOCK (display command line prompts)

Function Description:



Users could create a block definition by selecting objects, specifying its base point, and giving it a name. Inputting "-block" under the command prompt, it will display options.

Related tutorial video:

- [Wipeout command](#) 00:37
 - [Selectioncycling command](#) 00:54
 - [Menus and Shortcut Menus](#) 01:10
 - [Block command](#) 01:12
 - [Revcloud command](#) 02:05
-

- [Layer command](#) 00:43
 - [Status bar related setting](#) 00:50
 - [Insert command](#) 00:53
 - [Adcenter command](#) 02:08
 - [Changebase command](#) 02:46
 - [Block command](#) 03:12
 - [Bedit command](#) 03:51
 - [Xplode command](#) 04:30
 - [Wblock command](#) 04:52
-

- [Bedit command](#) 00:34
 - [Bparameter command](#) 00:49
 - [Status bar related setting](#) 01:00
 - [Bactiontool command](#) 01:54
 - [Block command](#) 02:45
 - [Dynamic block creation](#) 03:12
 - [Insert command](#) 04:12
-

- [Attdef command](#) 01:01
- [Block command](#) 02:28
- [Xplode command](#) 02:46
- [Insert command](#) 03:13

- [Eattedit command](#) 03:39

Above video sources from [TUTORIAL - GETTING STARTED WITH GSTARCAD](#), enrol now for free.

Online URL: <https://www.gstarcad.com.my/knowledge/article/block-command-2002.html>