

BATCHPRINT command

2011 GstarCAD MY /KW August 5, 2021 [CAD Commands](#) 0 945

The **BATCHPRINT** command batch print drawings with the same drawing frame attribute.

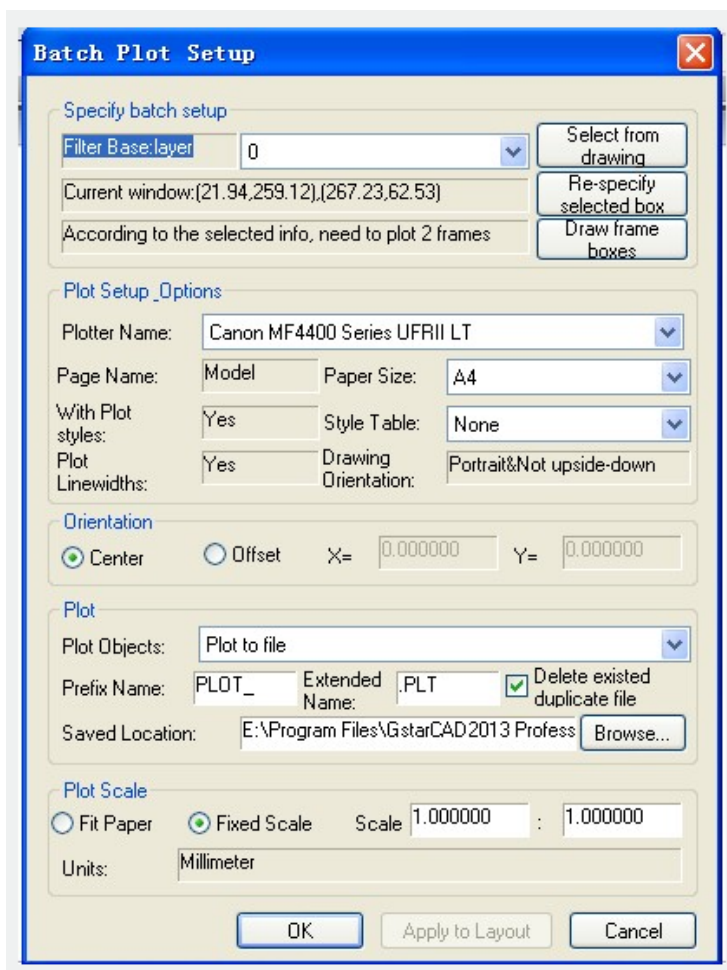
Command Access :

Menu : Express tools>Plot Tool>Batch Print

Command Entry : BP

Operation steps:

- 1.Start the command.
- 2.Specify the type of frame, you can select Layer/ Block/ Polyline so that the system can recognize the frame.
- 3.Corner select the frame you want to print, you will get a dialog box as below.



4. Set the print Parameters, click "OK" to execute bath print.

Online URL: <https://www.gstarcad.com.my/knowledge/article/batchprint-command-2011.html>