

## DXBIN command

2108 GstarCAD MY /KW August 12, 2021 [CAD Commands](#) 0 1008

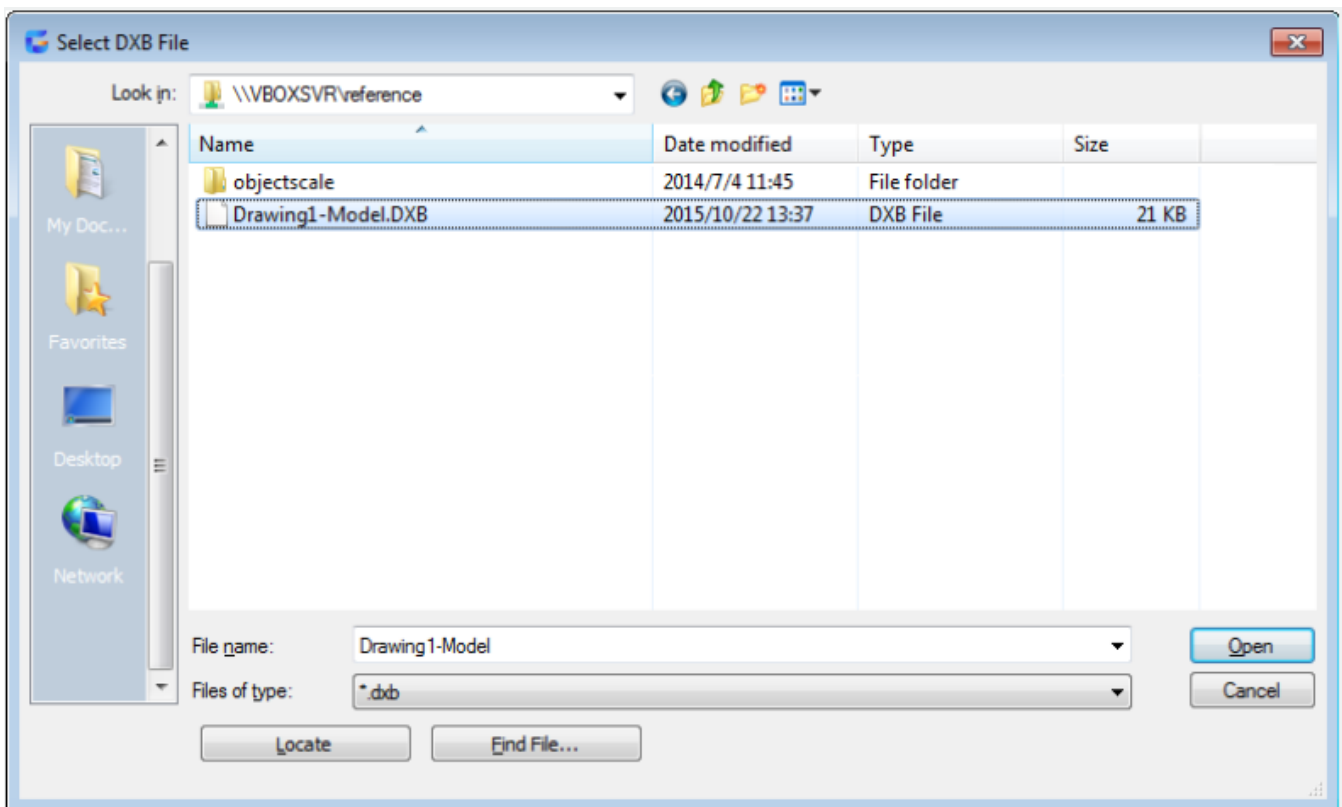
The **DXBIN** command is used to import DXB (Drawing Interchange Binary) file to current file.

### Command Access:

**Command:** DXBIN

### Function Description:

The DXBIN file only contains 2D vectors that expressed by binary system of 16 bit integer precision. Those vectors are imported as line objects and their layer and object properties are assumed to be current.



Users could input file name to select the specified DXB file.

Online URL: <https://www.gstarcad.com.my/knowledge/article/dxbin-command-2108.html>