

# ETRANSMIT command

2116 GstarCAD MY /KW August 12, 2021 [CAD Commands](#) 0 827

The ETRANSMIT command is used to package a set of files for Internet transmission.

## Command Access:

**Menu** : Application Menu > Send > E-Transmit...

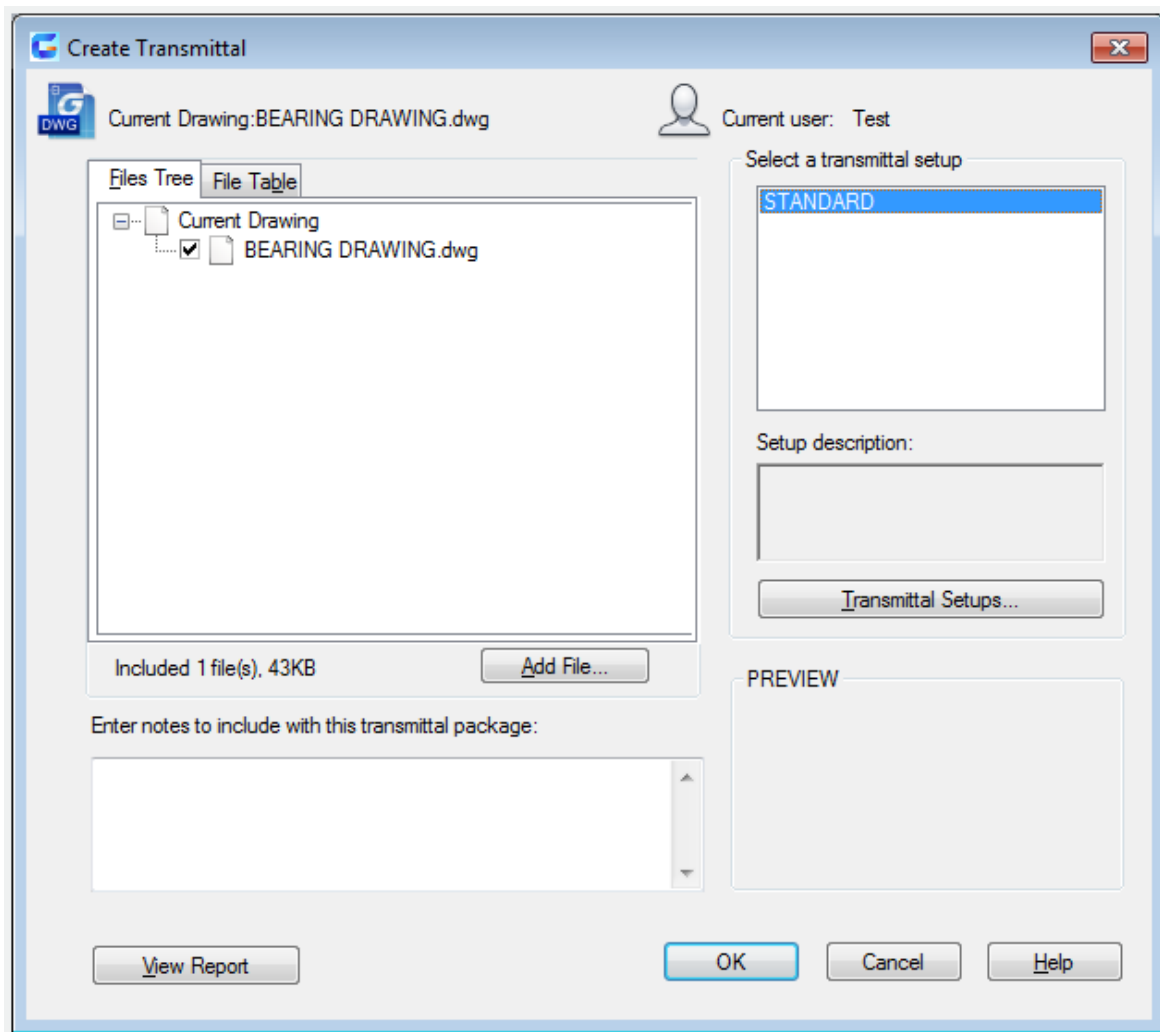
**Menu** : File > eTransmit

**Command** : ETRANSMIT

## Function Description:

When running this command, it will automatically package all related subordinate files, such as external reference files and font files.

Inputting "-etransmit" under command prompt, it will display options.



Online URL: <https://www.gstarcad.com.my/knowledge/article/etransmit-command-2116.html>