

EXPORT command

2118 GstarCAD MY /KW April 11, 2022 [CAD Commands](#) 0 1878

The **EXPORT** command is used to save selected objects in other file formats.

Command Access:

Ribbon : Export > Export > Export

Menu : File > Export

Command : EXPORT

Function Description:

This command could export the following file formats:

3D DWF (*.dwf)/ 3D DWFx (*.dwx) : 3D Design Web Format

Metafile (*.wmf) : Microsoft Windows metafile

ACIS (*.sat) : ACIS solid object file

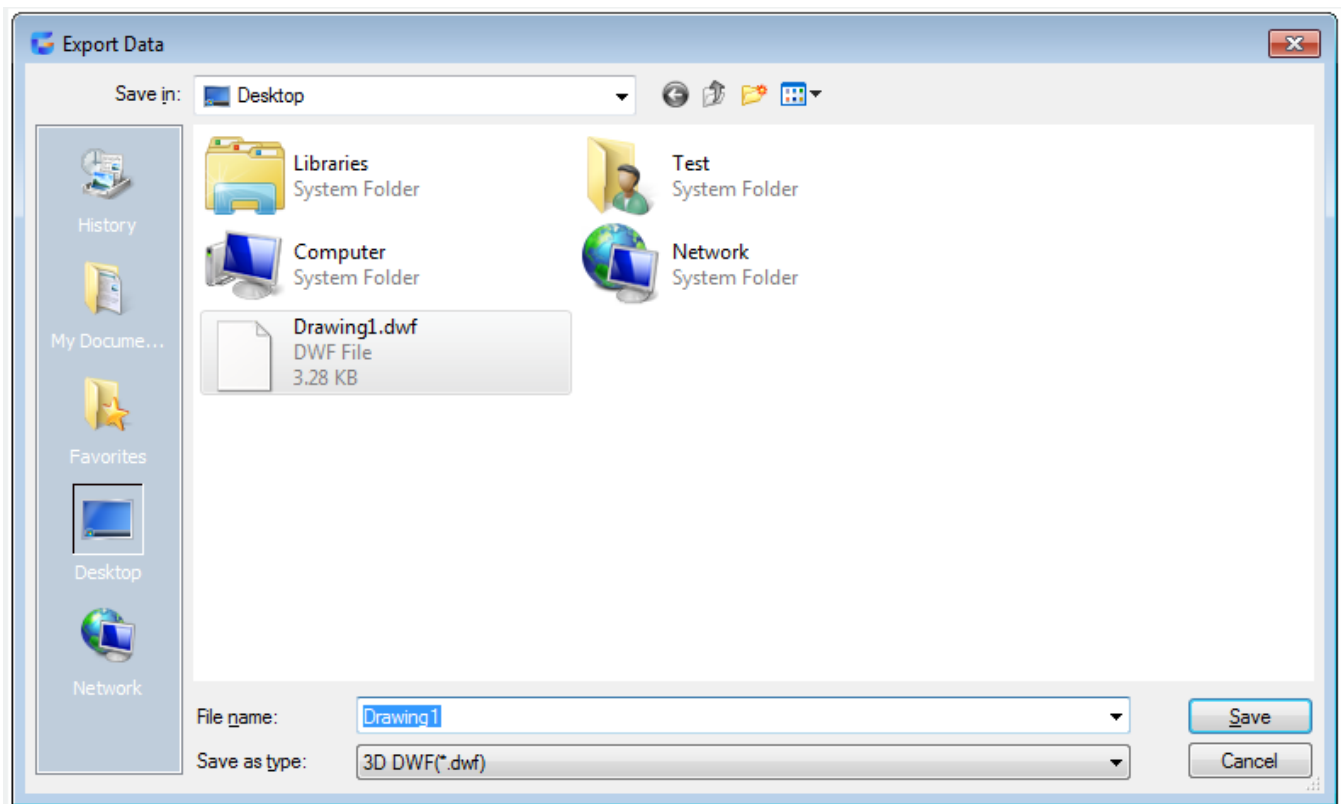
Lithography (*.stl) : solid object light curing rapid prototyping file

Encapsulated PS (*.eps) : encapsulated PostScript file

DXX Extract (*.dxx) : attribute extraction DXFTM file

Bitmaps (*.bmp) : device-independent bitmaps

Block (*.dwg) : drawing file



Related tutorial video:

- [Open a drawing](#) 00:24
- [Work with multiple open drawing](#) 00:48
- [Close command](#) 01:05
- [Closeall command](#) 01:11
- [New command](#) 01:19
- [Qnew command](#) 01:19
- [Save command](#) 01:47
- [Qsave command](#) 01:47
- [Saveas command](#) 01:58
- [Import command](#) 02:16
- [Export command](#) 02:28
- [DWGconvert command](#) 03:30

Above video sources from [TUTORIAL - GETTING STARTED WITH GSTARCAD](#), enrol now for free.

Online URL: <https://www.gstarcad.com.my/knowledge/article/export-command-2118.html>