

# INSERTOBJ command

2163 GstarCAD MY /KW August 16, 2021 [CAD Commands](#) 0 1136

The **INSERTOBJ** command is used to insert a link or a embed object.

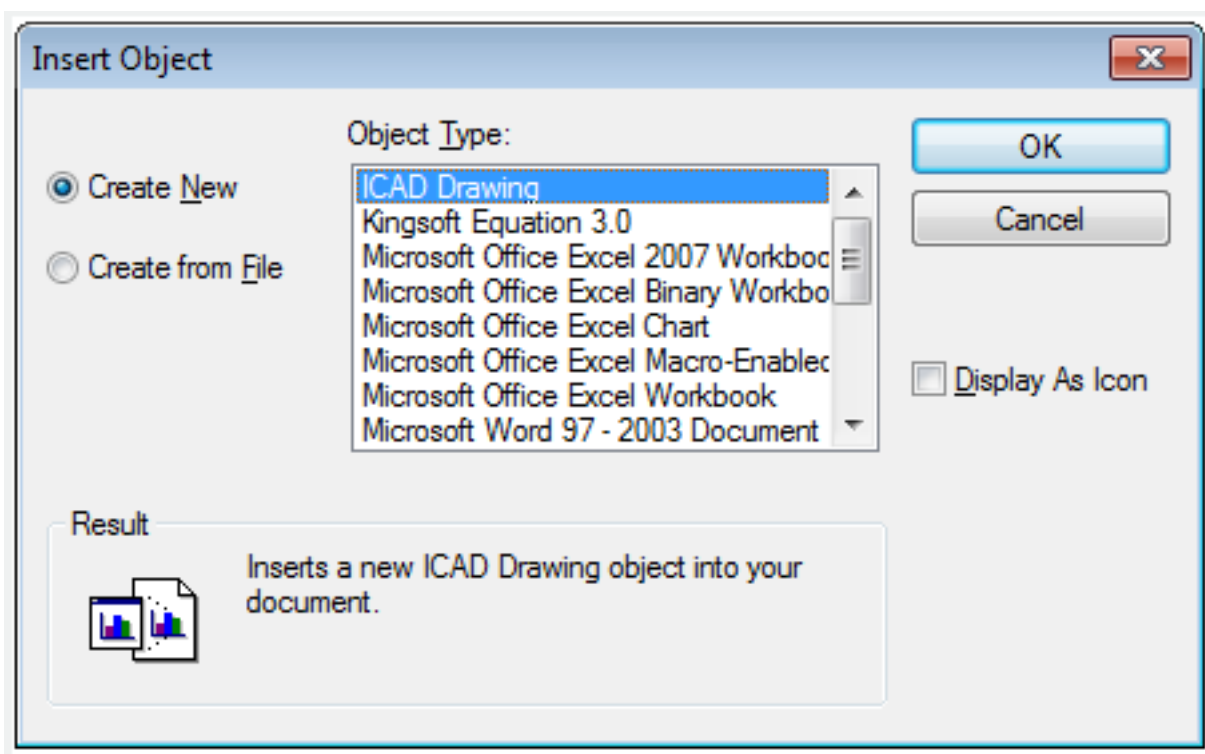
## Command Access:

**Ribbon** : Insert > Data > OLE Object

**Menu** : Insert > OLE Object

**Command** : INSERTOBJ

## Function Description



If the link information has changed in source files, it will update in other documents. If the nested information has changed in source files, it will not update in other documents.

Online URL: <https://www.gstarcad.com.my/knowledge/article/insertobj-command-2163.html>