

LAYOUTWIZARD command

2188 GstarCAD MY /KW August 17, 2021 [CAD Commands](#) 0 739

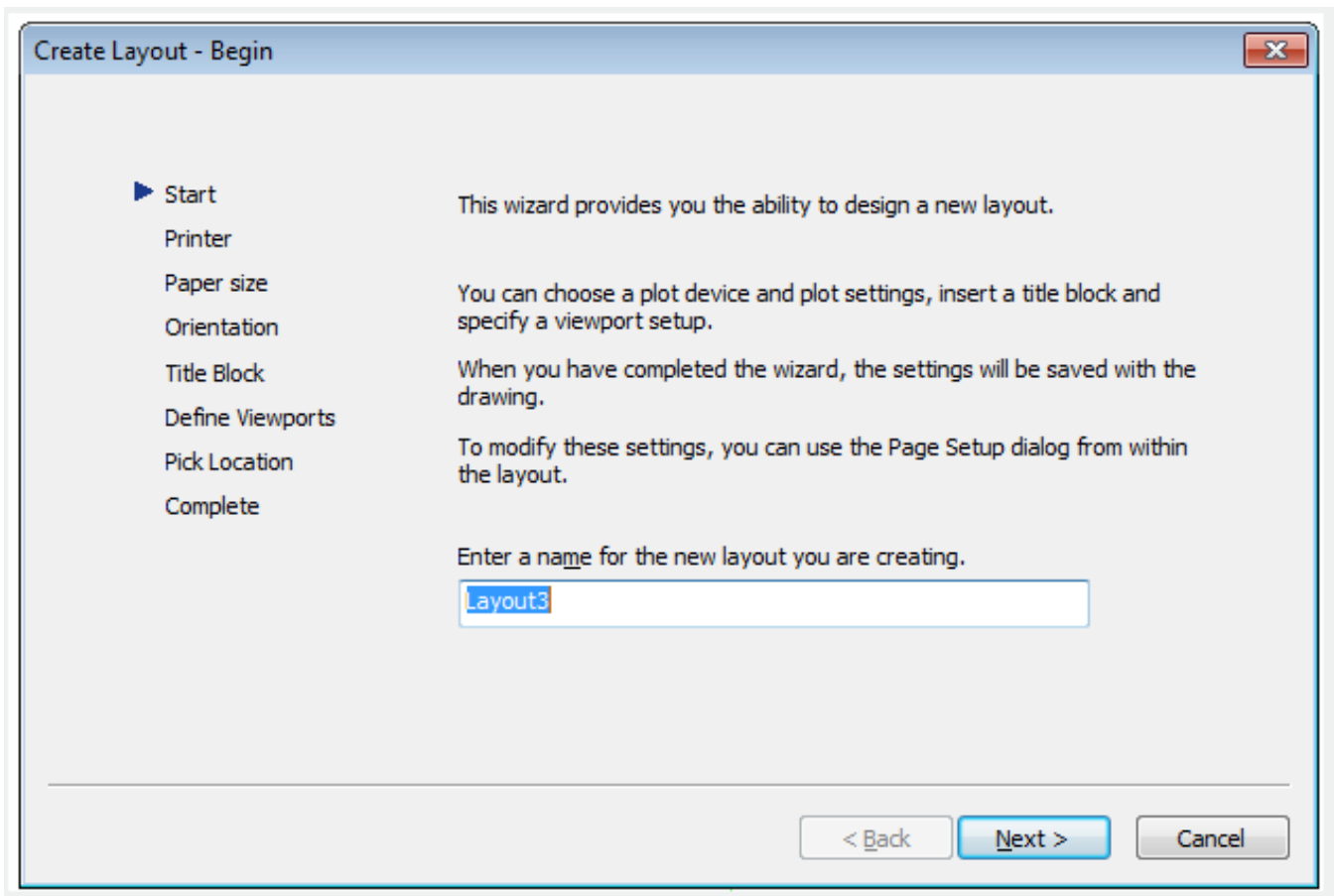
The **LAYOUTWIZARD** command is used to create new layout and specify page and print settings.

Command Access:

Menu : Insert > Layout > Create Layout Wizard

Command: LAYOUTWIZARD

Function Description:



Online URL: <https://www.gstarcad.com.my/knowledge/article/layoutwizard-command-2188.html>