

LAYTRANS command

2191 GstarCAD MY /KW August 17, 2021 [CAD Commands](#) 0 1214

The LAYTRANS command is used to change the current layer to specified layer standard.

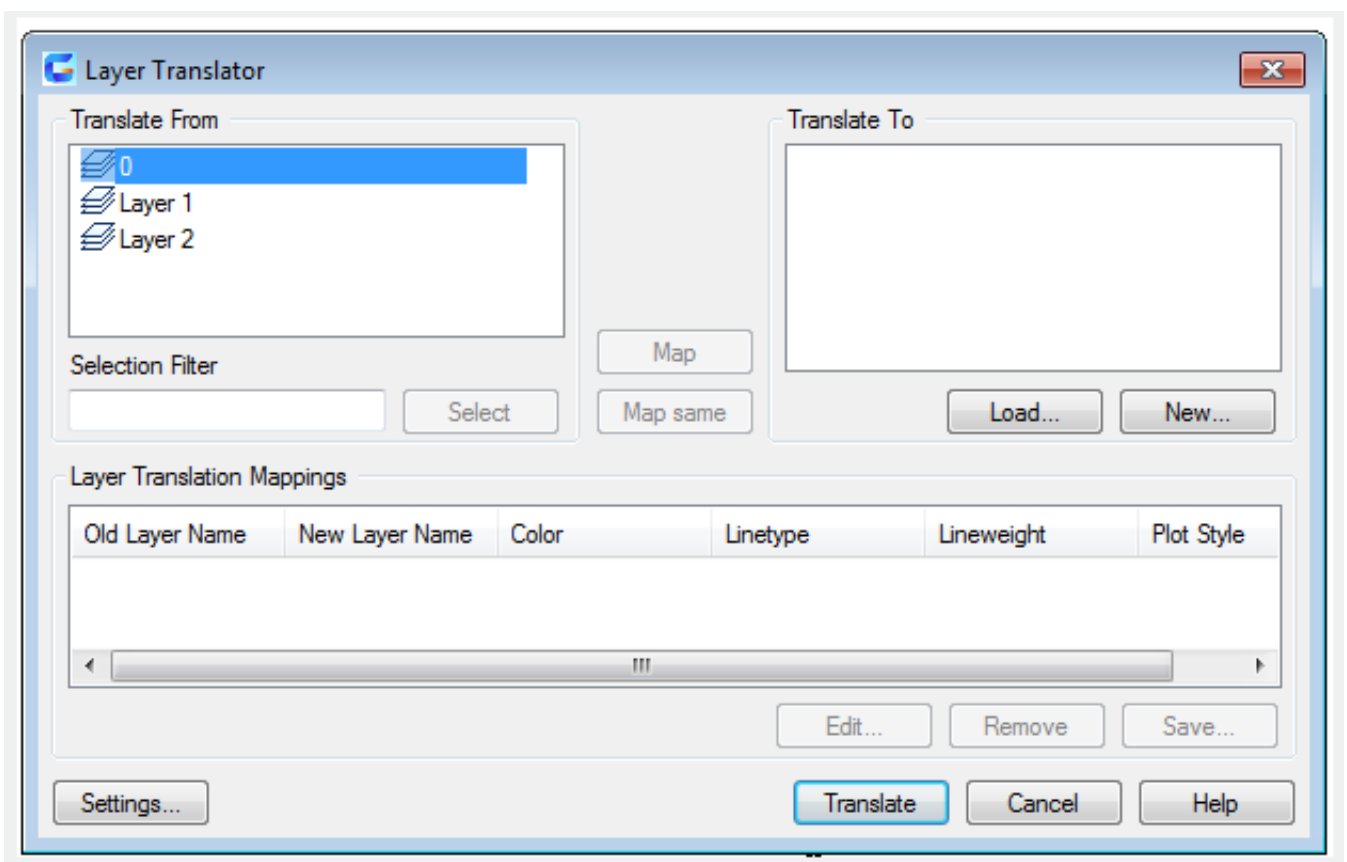
Command Access:

Ribbon : Manage > CAD Standards > Layer Translator

Menu : Format > Layer Tools > Layer Translator...

Command : LAYTRANS

Function Description:



Users could map the current layers in drawing to other layer names and layer properties of a specified drawing or standard files, and then translate them.

Online URL: <https://www.gstarcad.com.my/knowledge/article/laytrans-command-2191.html>