

-LINETYPE command

2204 GstarCAD MY /KW April 14, 2022 [CAD Commands](#) 0 1761

The -LINETYPE command is used to load, set up, and modify linetypes.

Command Access:

Command : -LINETYPE

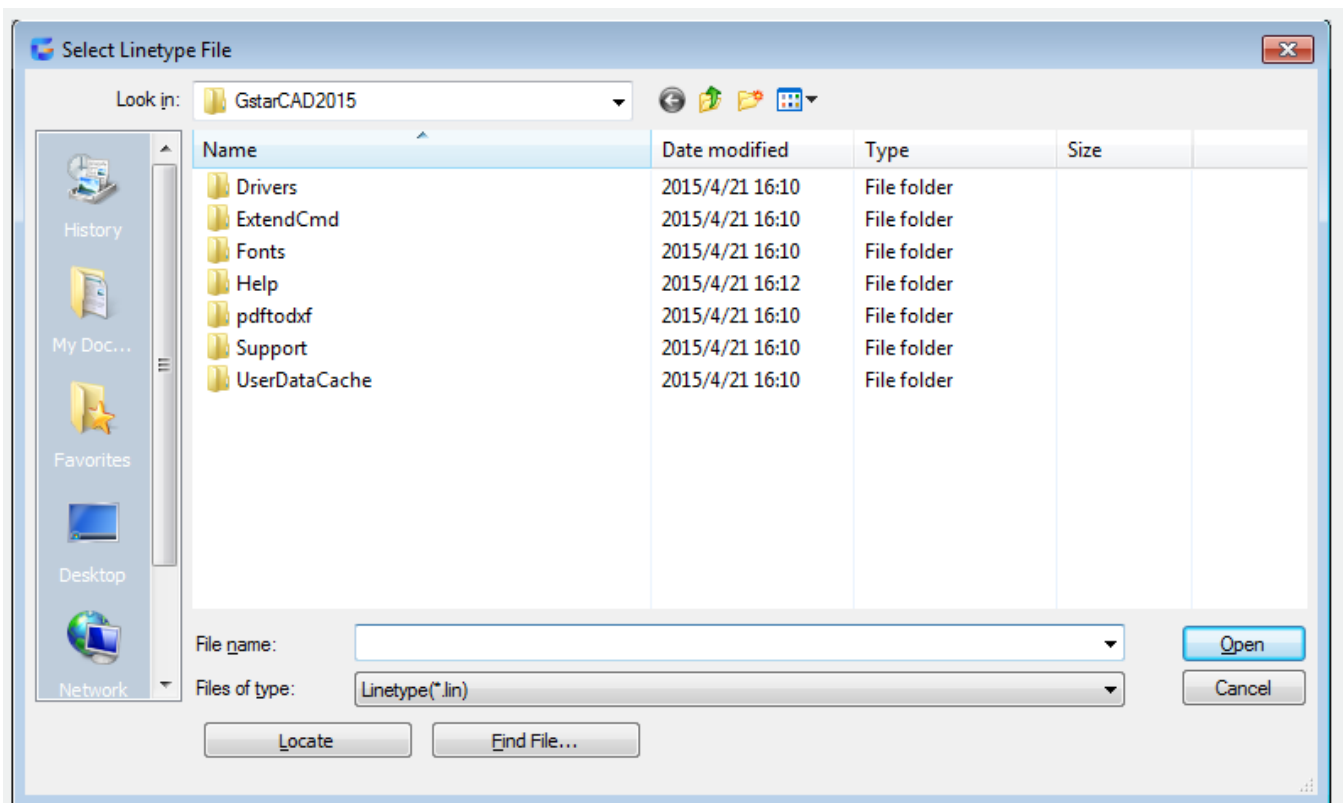
Command Prompts:

Enter an option [? /Create/Load/Set]:

Relative Glossary::

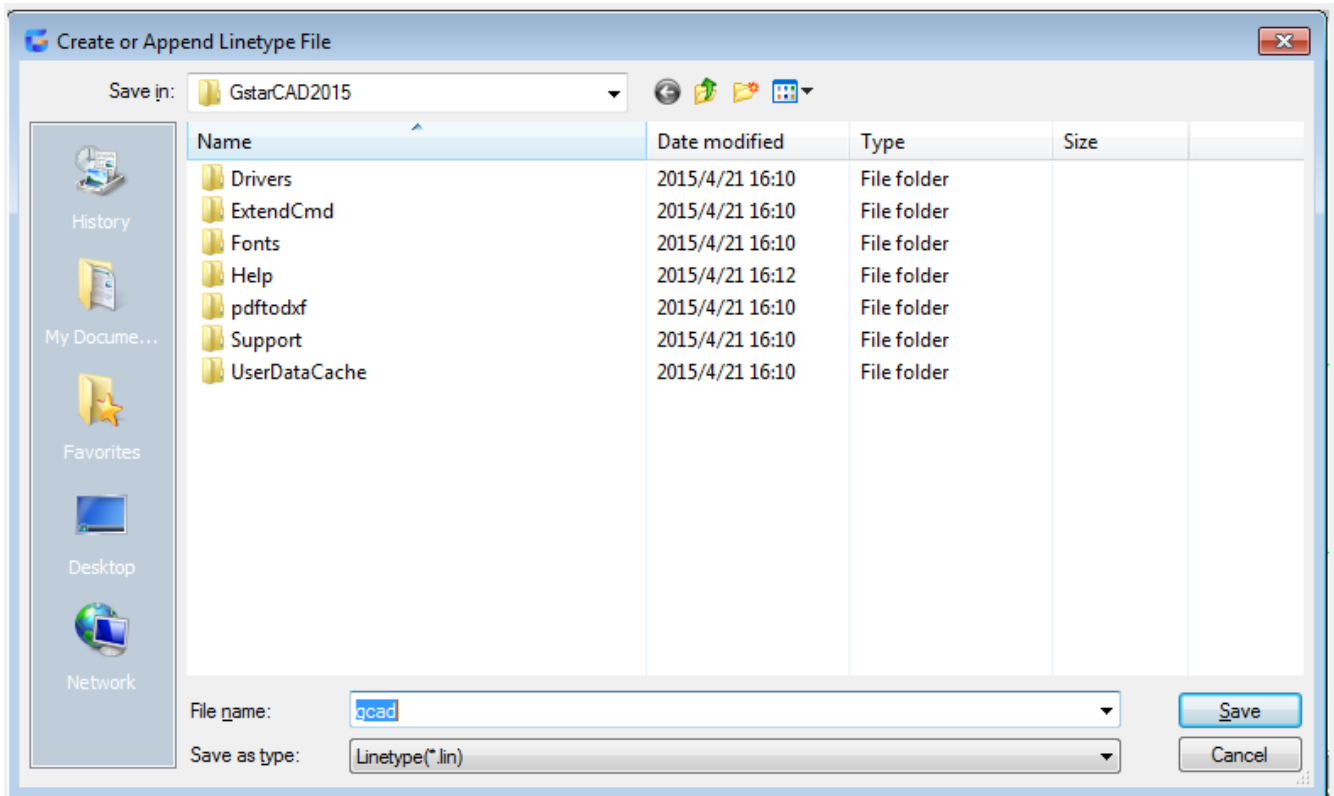
?-list linetype:

Display the "Select Linetype File" dialog box. It will list all available linetype files after selecting LIN file type.

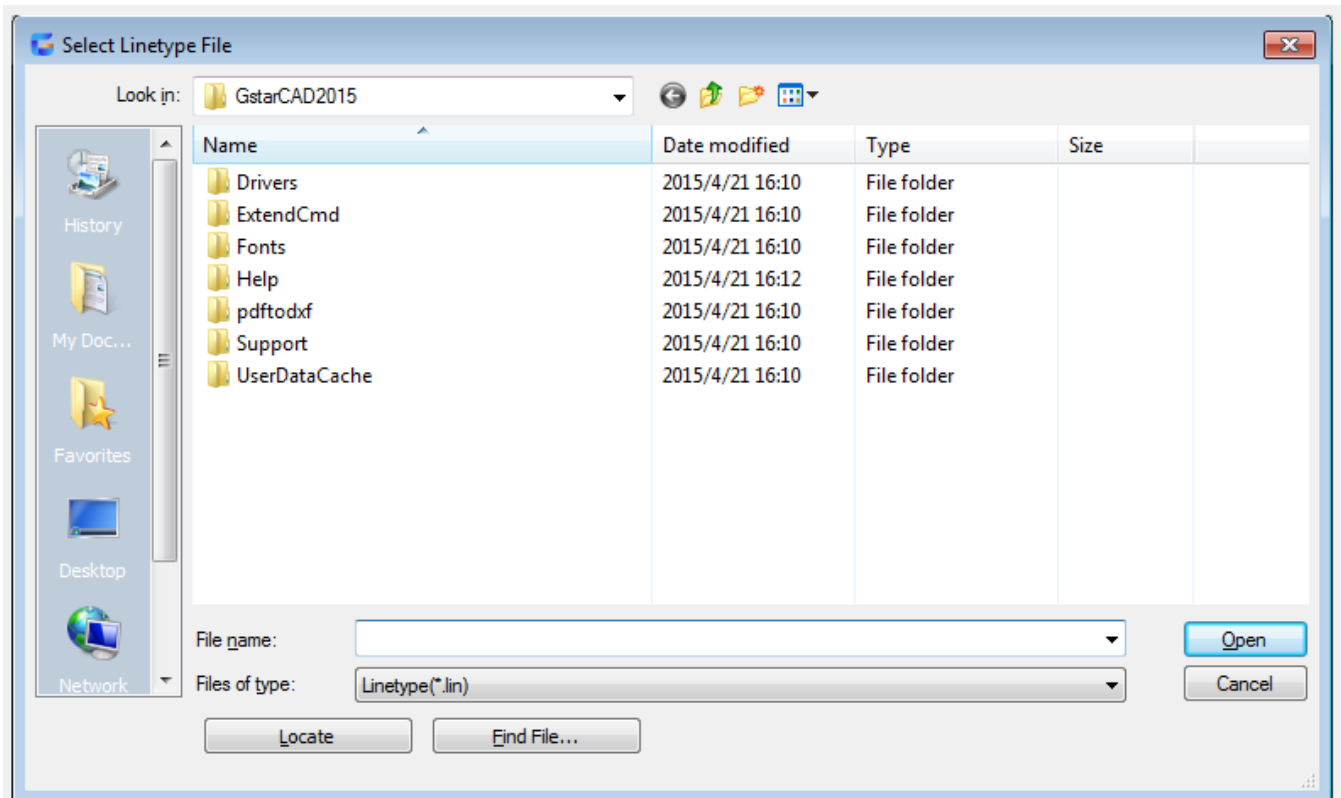


Create:

Create a new linetype and save it to LIN file. Display the "Create or Append Linetype File" dialog box. Specify the file to add linetypes. Users could not use the LINETYPE command to create complex linetype



Load: Load the defined linetype. The "gcadiso.lin" file contains standard linetype. Display the "Select Linetype File" dialog box. Inputting or selecting the saved linetype file to load it.



Set:

Set the current linetype for later creating objects. Users could control the object linetype separately or by layer. Set the inputted linetype to be current. No matter what is the current layer, all new objects are created by this the current layer. If the needed linetype has not been loaded, it will search and define it in "gcadiso.lin" file. If it has not been loaded and does not include in "gcadiso.lin" file, it will display the message and return to command prompt.

Input "?" to list all loaded linetype names. Inputting "bylayer", the new created object will inherit associated linetype of its layer. Inputting "byblock", the new created object will use the CONTINUOUS linetype until forming a block. No matter when inserting a block, objects in block inherit linetype of block.

Related tutorial video:

- [Status bar related setting](#) 00:23
- [Line command](#) 00:33
- [Polar](#) 00:39
- [Edit objects + grips](#) 00:56
- [Grips System variable](#) 00:56

- [Use grips to edit objects](#) 00:56
- [Properties command](#) 01:16
- [Display and change the properties of objects](#) 01:16
- [Linetype command](#) 01:26
- [-Linetype command](#) 01:26
- [Control Line Scale](#) 01:26
- [Color command](#) 01:33
- [Change the color of an object](#) 01:33
- [Set the current color](#) 01:33
- [Polyline command](#) 02:00
- [Fillet command](#) 02:40
- [Draw Rectangles and Polygons](#) 03:01
- [Revcloud command](#) 03:10
- [Donut command](#) 03:14
- [Draw Donuts](#) 03:14
- [Edit objects + grips](#) 03:23
- [Grips System variable](#) 03:23
- [Use grips to edit objects](#) 03:23
- [ARC command](#) 03:54
- [How to draw an arc with specific arc length](#) 03:54
- [Circle command](#) 04:42
- [Concentric circle command](#) 04:54
- [Properties command](#) 05:54
- [Mirror command](#) 05:16

Above video sources from [TUTORIAL - GETTING STARTED WITH GSTARCAD](#), enrol now for free.

Online URL: <https://www.gstarcad.com.my/knowledge/article/linetype-command-2204.html>