

PLOTSAMP command

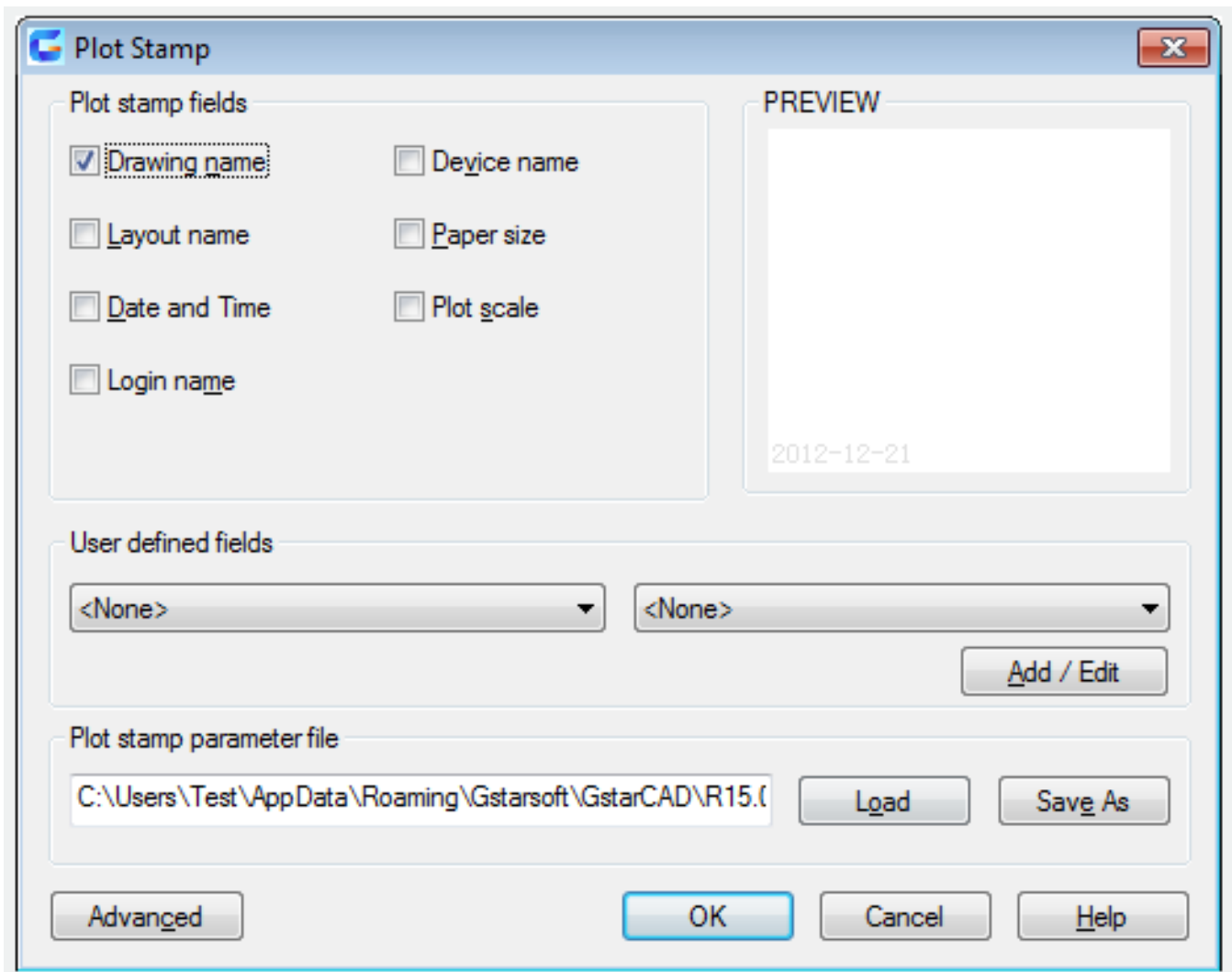
2283 GstarCAD MY /KW August 20, 2021 [CAD Commands](#) 0 953

The **PLOTSAMP** command is used to place a stamp at a specified position and record it in the file.

Command Access:

Command : PLOTSTAMP

Function Description:



Inputting "_plotstamp" under command prompt, it will display options.

Online URL: <https://www.gstarcad.com.my/knowledge/article/plotsamp-command-2283.html>