

QSAVE command

2306 GstarCAD MY /KW April 11, 2022 [CAD Commands](#) 0 1674

The **QSAVE** command is used to save the current drawing by specified default file formats.

Command Access:

Menu : Application menu > Save

Menu : File > Save

Command : QSAVE

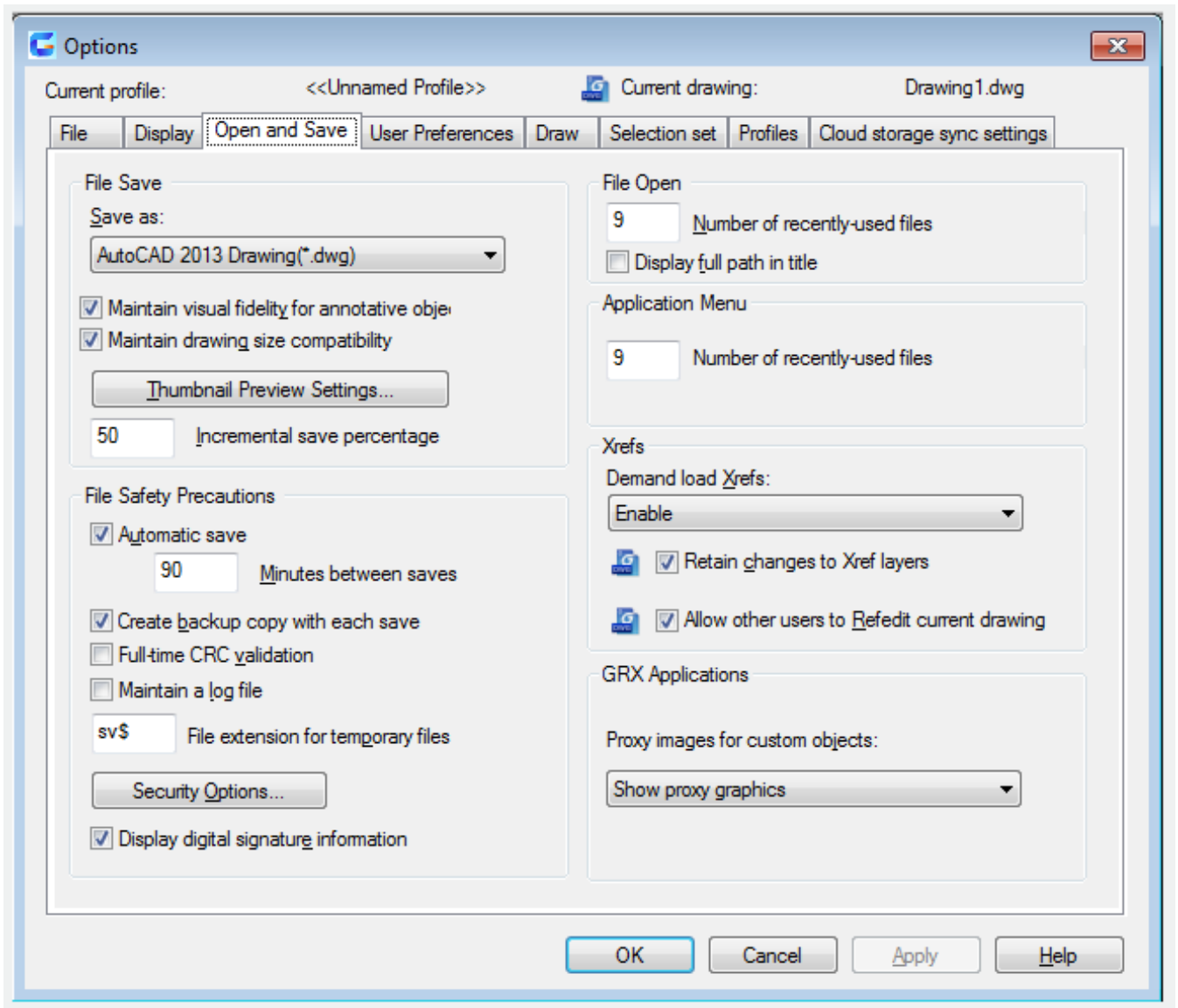
Function Description:

If the current drawing has been named, the program will save it without requirement of new file name.

Users could use the **SAVEAS** command to save current drawing with a different name. If the current drawing is read-only, users could also save it by the **SAVEAS** command with a different name.

If the current drawing has not been named, the "Save drawing as" dialog box pops up, users should save it with a specified name and formats.

Note: when saving drawings by the **QSAVE** command, the drawing formats will be specified by "Open and Save" options in the "Options" dialog box.



Related tutorial video:

- [Open a drawing](#) 00:24
- [Work with multiple open drawing](#) 00:48
- [Close command](#) 01:05
- [Closeall command](#) 01:11
- [New command](#) 01:19
- [Qnew command](#) 01:19
- [Save command](#) 01:47
- [Qsave command](#) 01:47

- [Saveas command](#) 01:58
- [Import command](#) 02:16
- [Export command](#) 02:28
- [DWGconvert command](#) 03:30

Above video sources from [TUTORIAL - GETTING STARTED WITH GSTARCAD](#), enrol now for free.

Online URL: <https://www.gstarcad.com.my/knowledge/article/qsave-command-2306.html>