

SUPERHATCH command

2377 GstarCAD MY /KW August 23, 2021 [CAD Commands](#) 0 1202

The **SUPERHATCH** command is used to create almost any type of fill like image, block, xref and wipeout, all you need to do is make a block of the pattern that you want to tile as your hatch.

Command Access :

Command : SUPERHATCH

Menu : Express>Draw>Superhatch

The Superhatch dialog box is displayed:

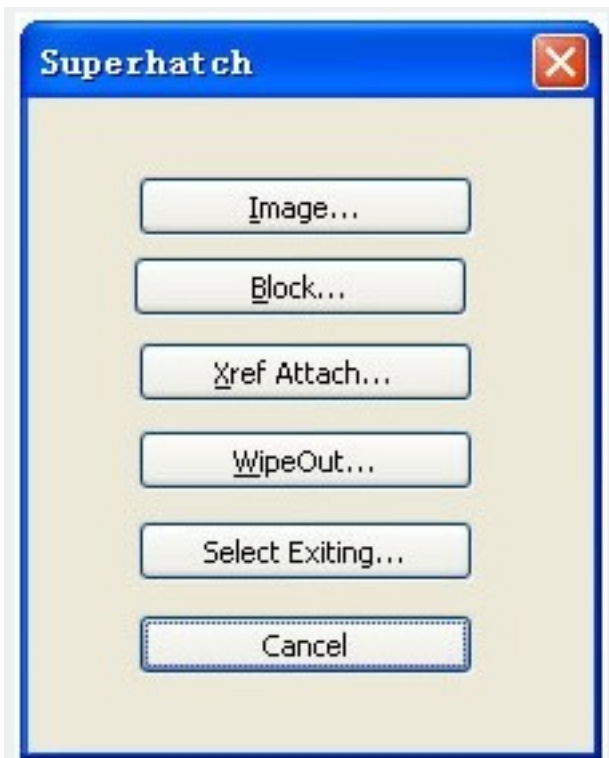


Image : Accesses the Select Image dialog box to specify the image for the hatch pattern.

Block : Opens the Superhatch_Insert dialog box to specify the block for the hatch pattern.

Xref Attach : Accesses the Select reference file dialog box for specifying an xref file for a hatch pattern.

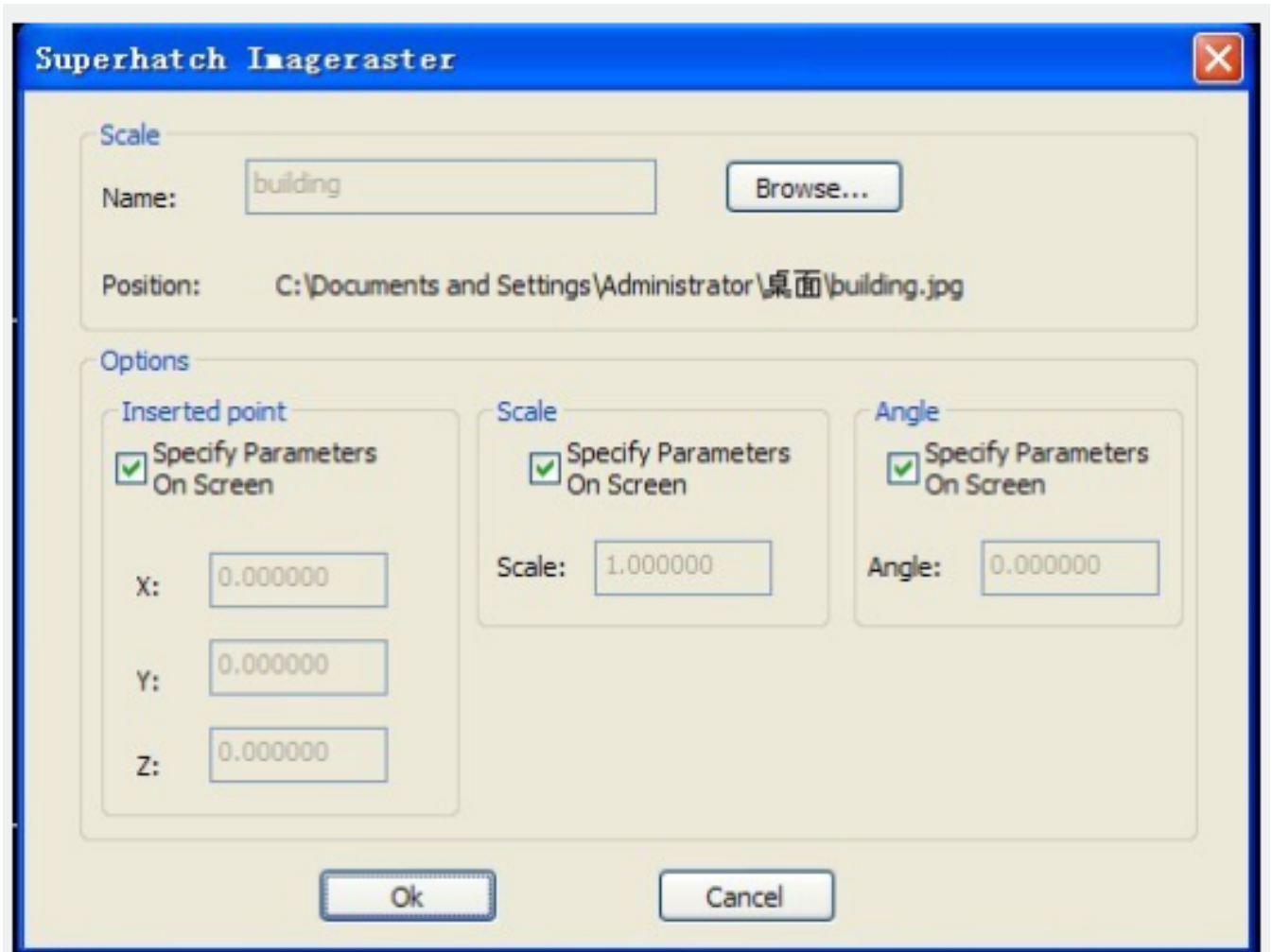
WipeOut : Selects a wipeout object as a hatch pattern.

Select Existing : Selects an existing image, block, xref, or Wipeout as a hatch pattern.

For Images:

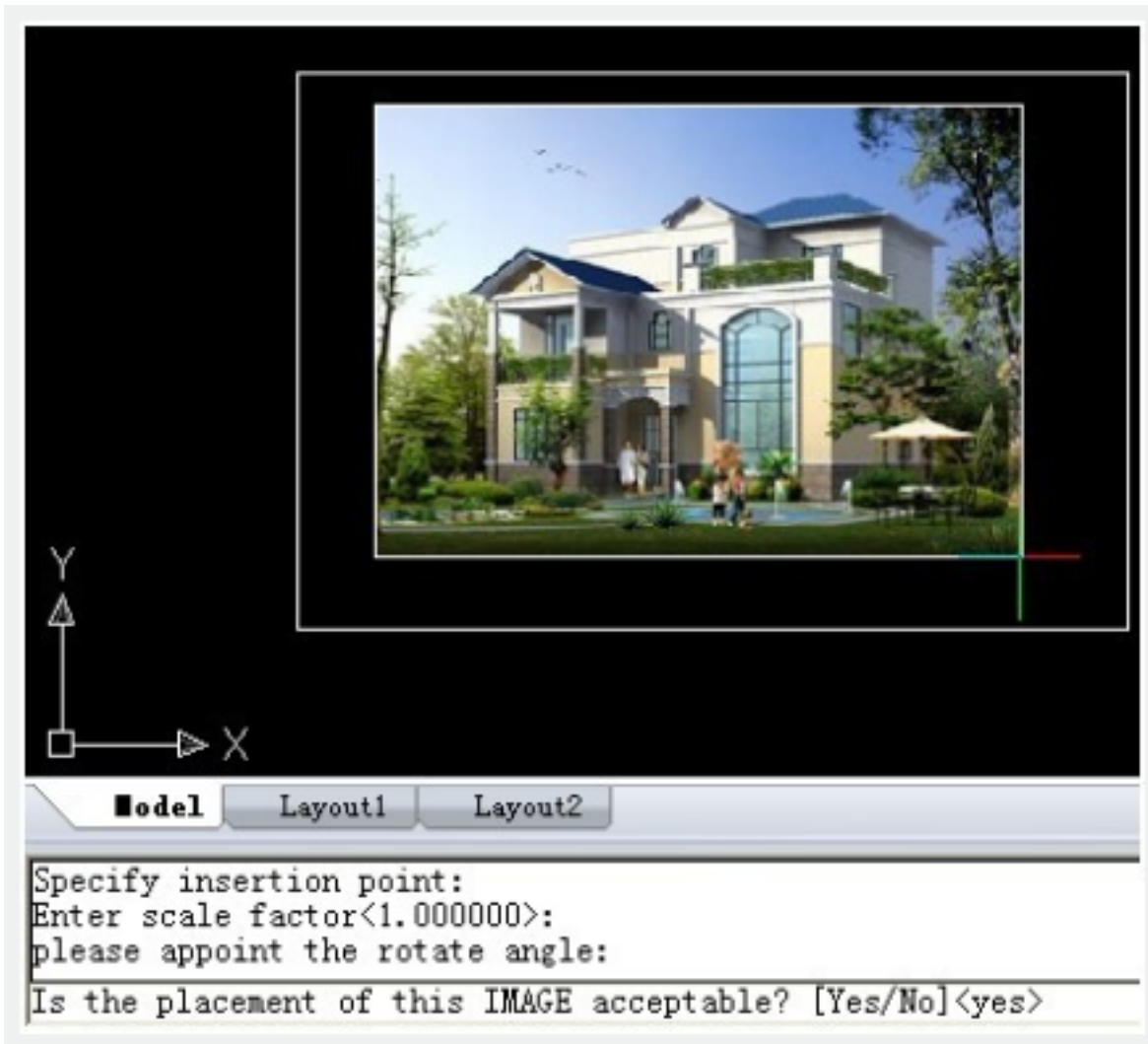
1. Open Superhatch dialog box.

2. Click Image... button, choose an image file, the Superhatch Imageraster dialog box is displayed:



3. Pick the OK button in the Superhatch Imageraster dialog box, specify insertion point, scale factor and angle of rotation.

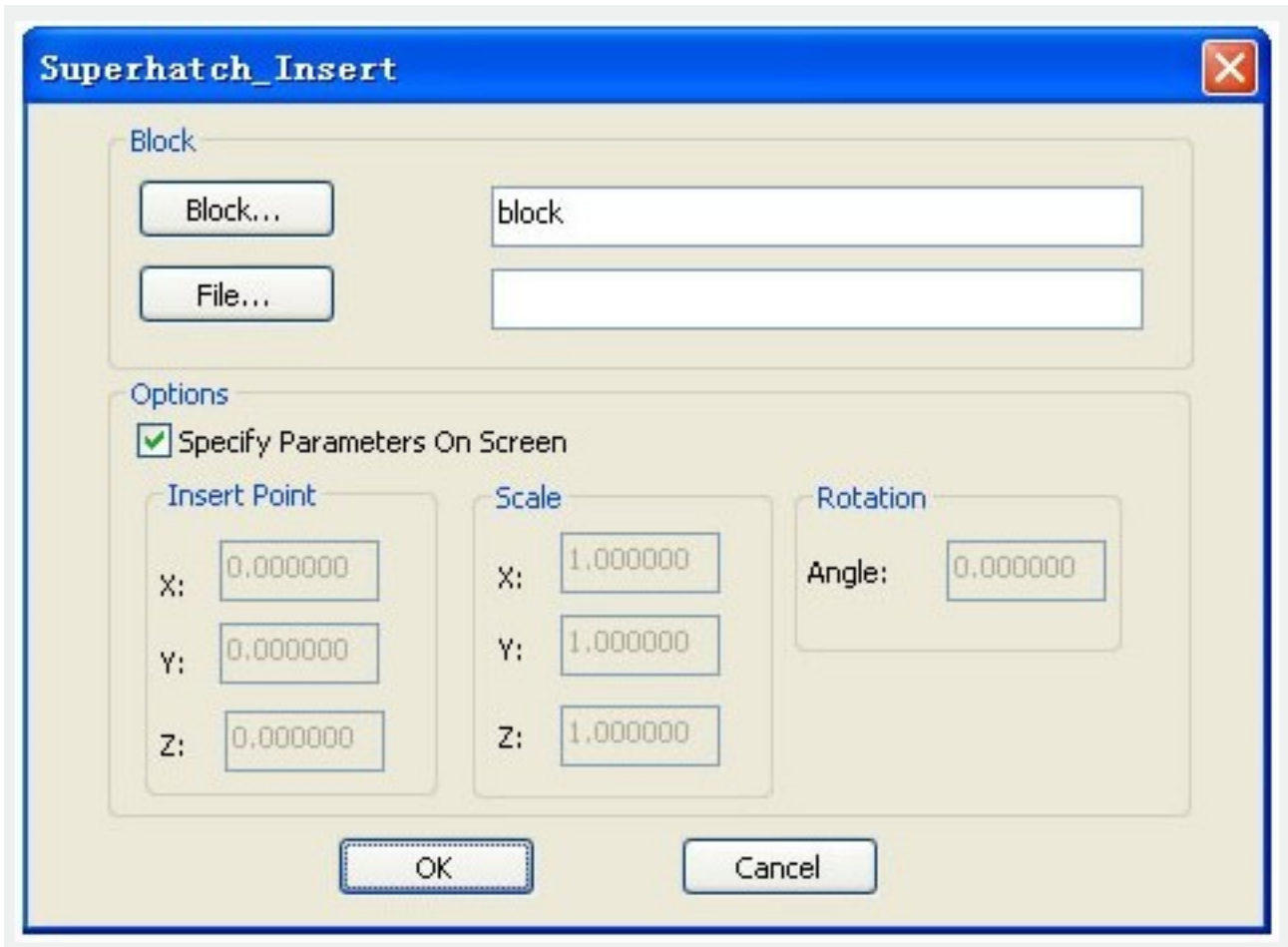
4. The prompt "Is the placement of this IMAGE acceptable? [Yes/No]<yes>":



5. Pick a point in the rectangle, press ENTER to finish.

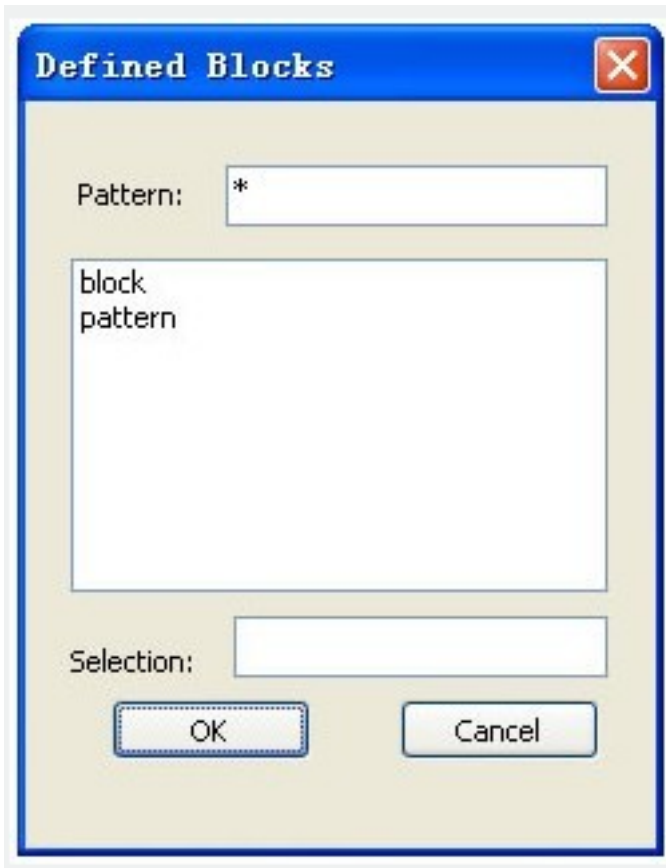
For Blocks:

1. Open Superhatch dialog box.
2. Click the Block... button to access the Superhatch_Insert dialog box:



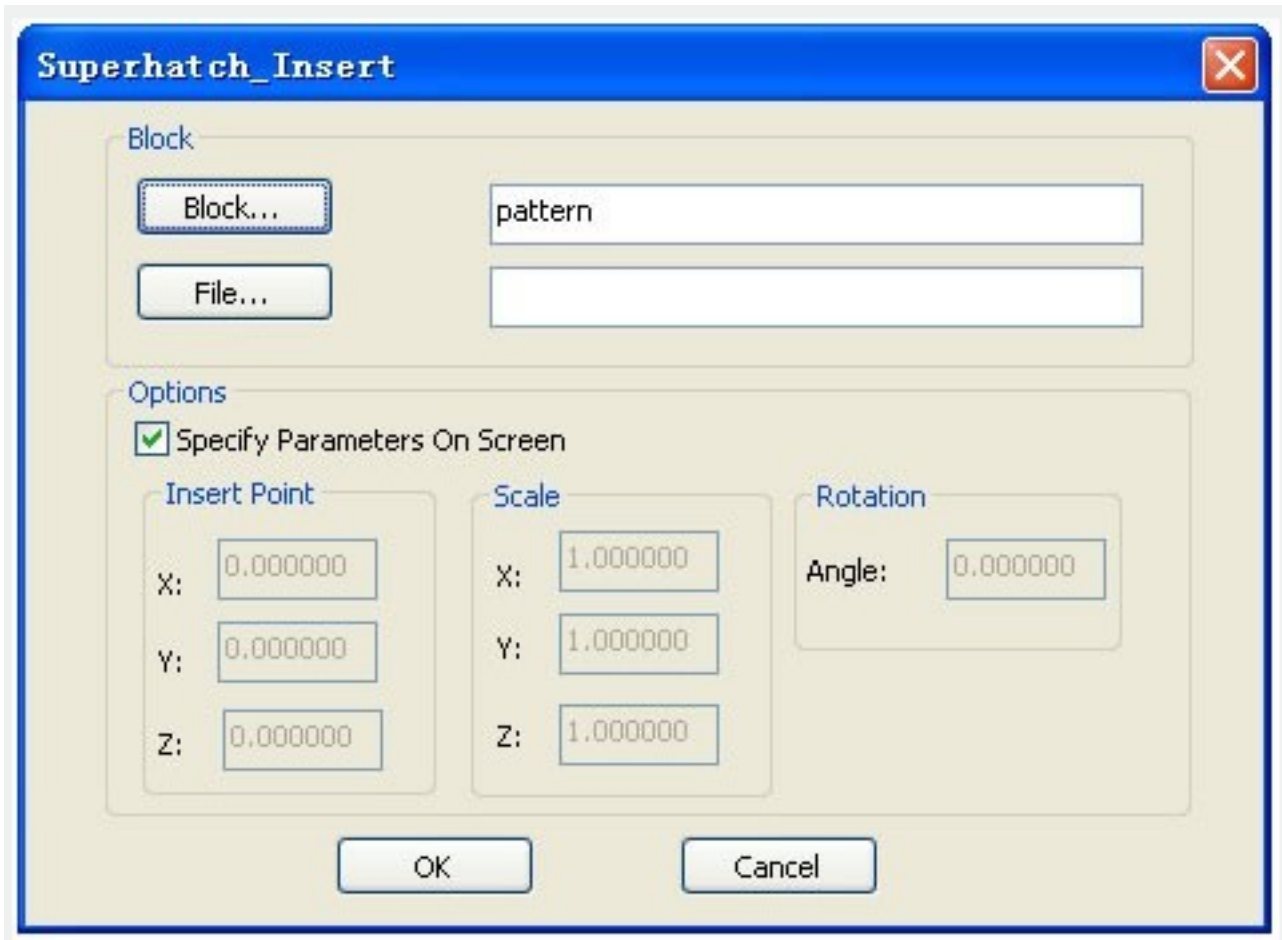
Block: Click the Block... button to select a block in the current file:

File: Pick the File... button to select a drawing file as the block.



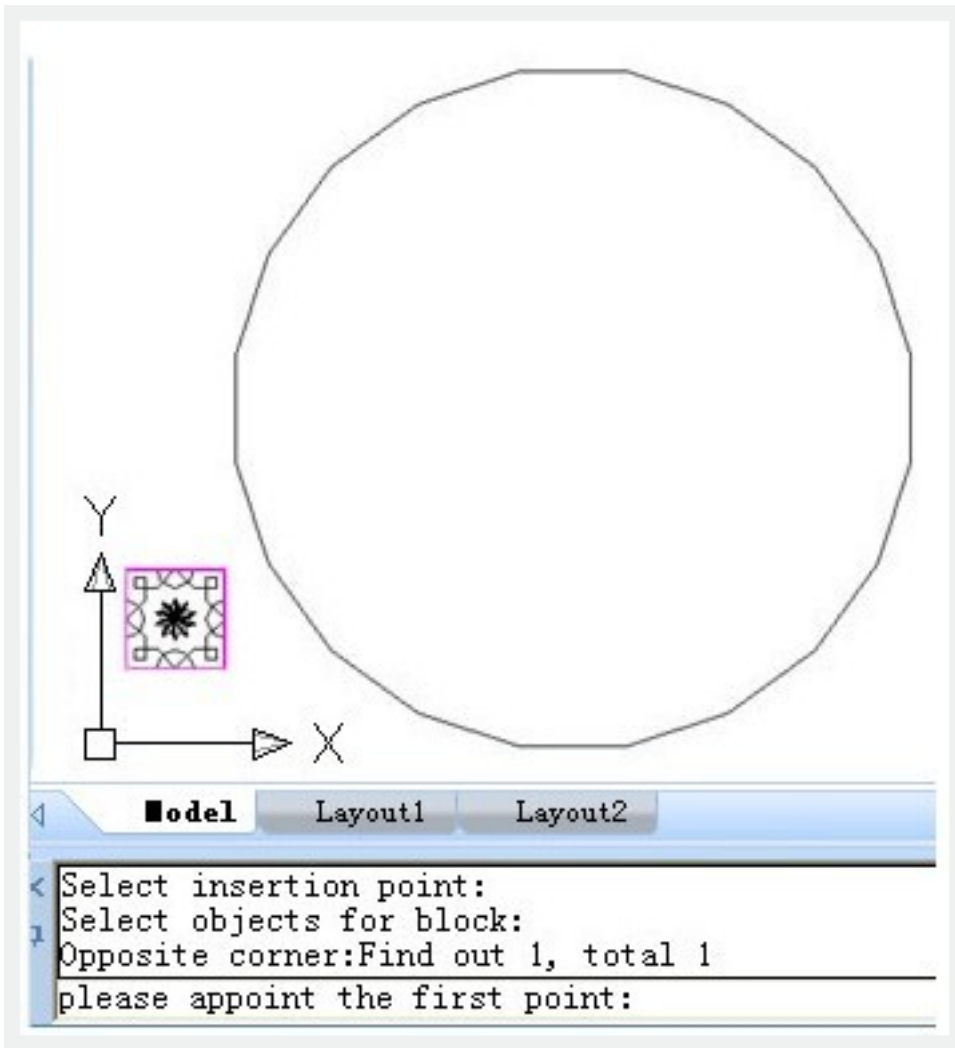
3. Select the block in the Defined Blocks dialog box and press OK.

Note: Adjust insertion parameters on screen or deselect the check box to preset insertion parameters:

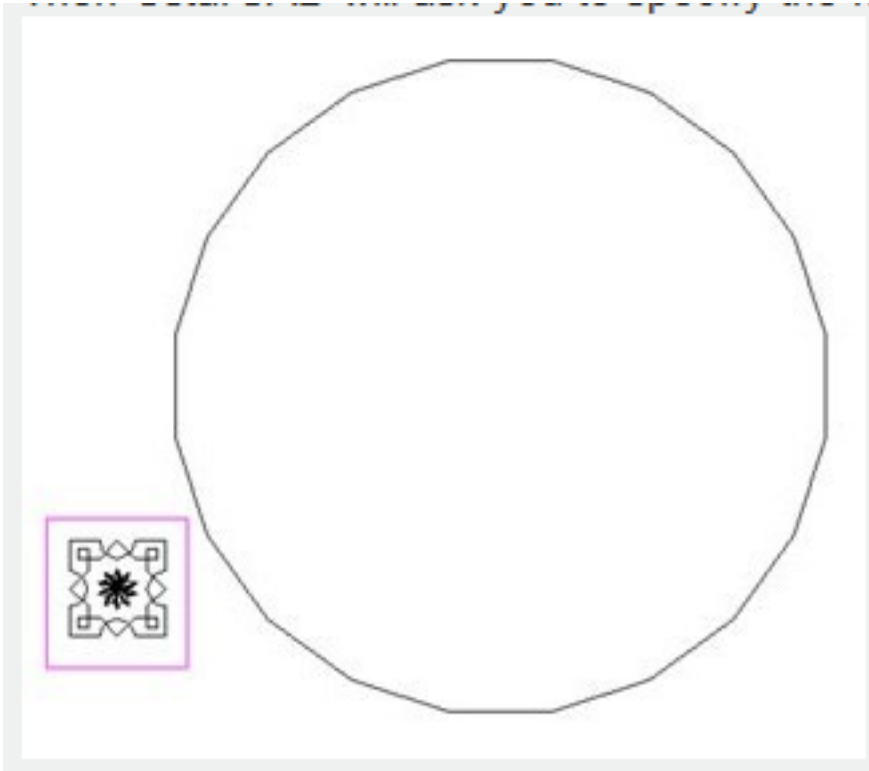


4. Specify insertion point, scale factor and angle of rotation.

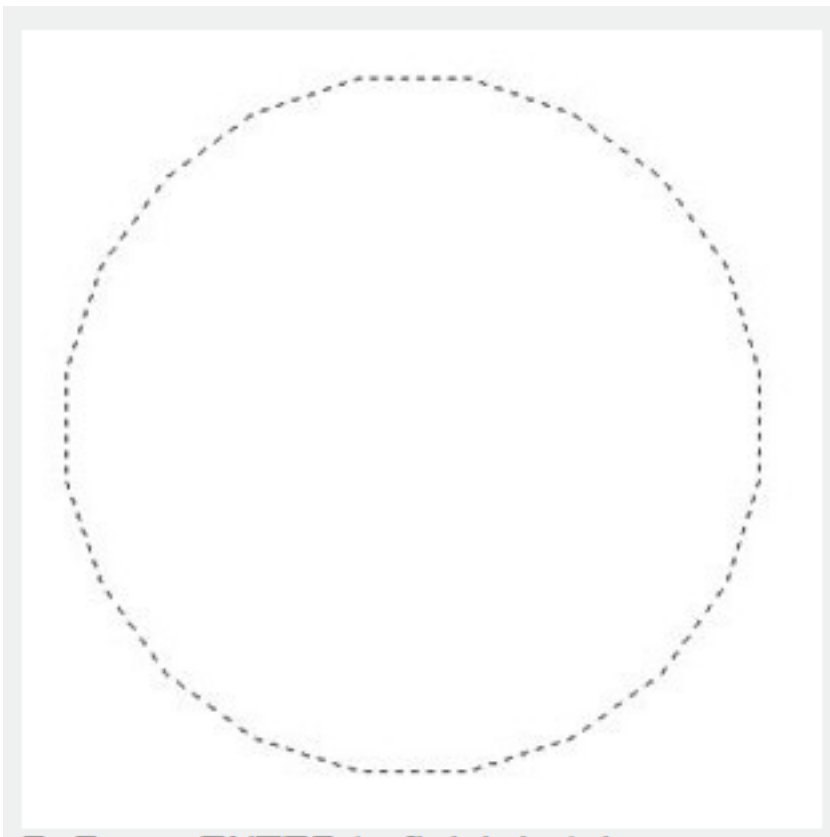
5. The prompt "Is the placement of this IMAGE acceptable? [Yes/No]<yes>" is displayed. Choose No to Esc. If you choose Yes, GstarCAD will ask you to specify the first point:



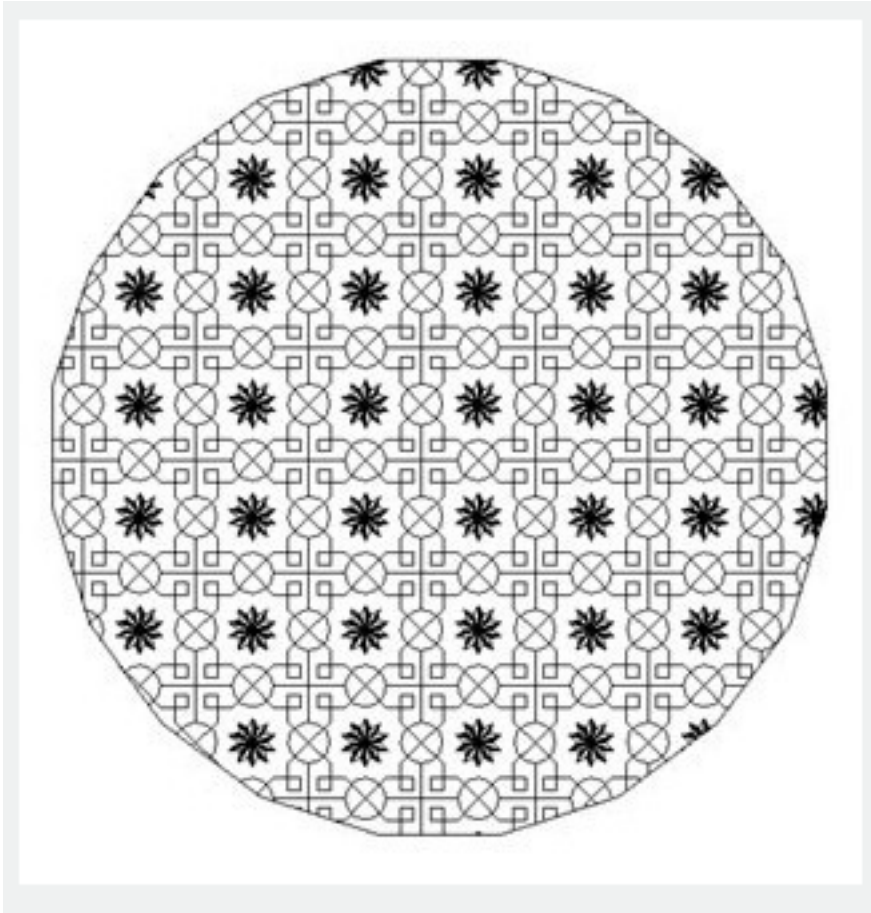
Then GstarCAD will ask you to specify the next point:



6. Specify an internal point for hatch boundary:



7. Press ENTER to finish hatch:



Online URL: <https://www.gstarcad.com.my/knowledge/article/superhatch-command-2377.html>