

# VBAMAN command

2420 GstarCAD MY /KW August 25, 2021 [CAD Commands](#) 0 1100

The **VBAMAN** command is used to manage VBA project operation by a dialog box.

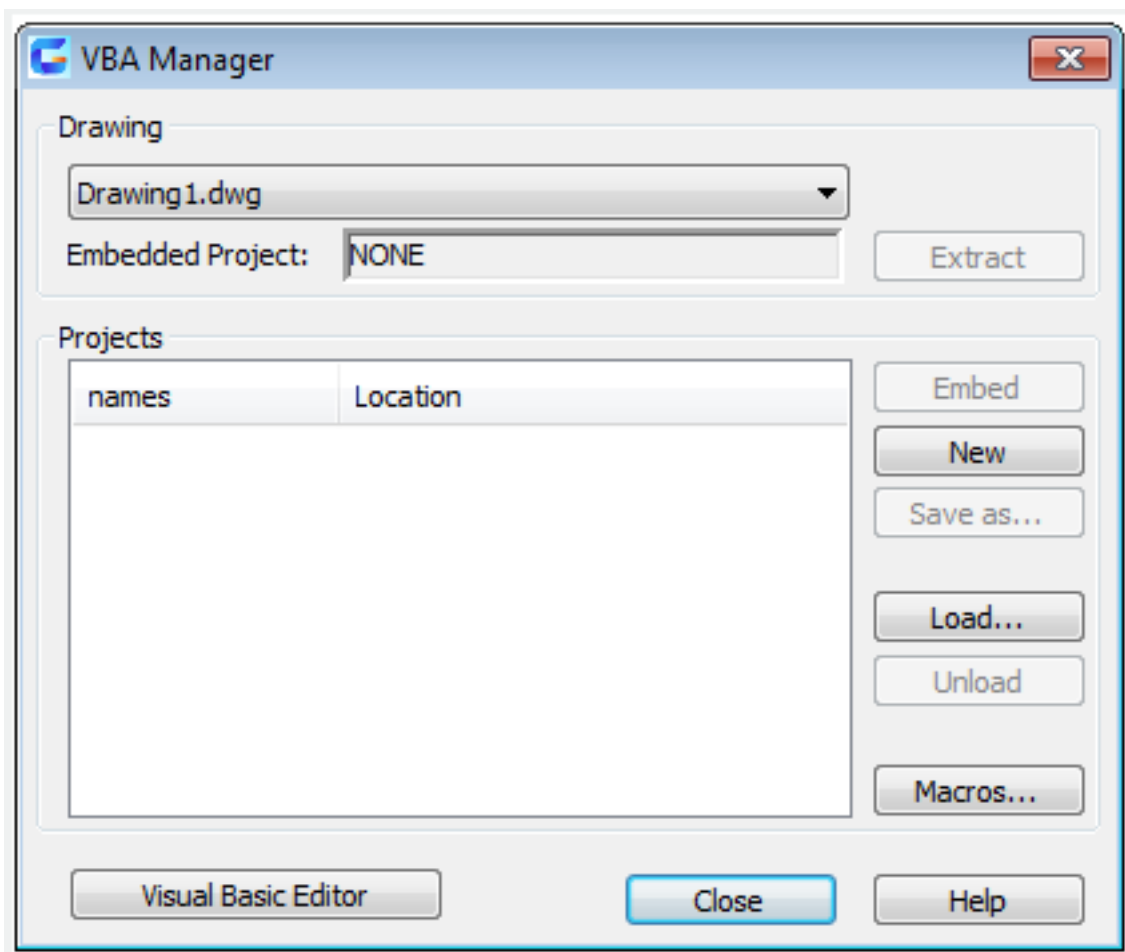
## Command Access:

**Ribbon** : Manage >Applications > VBA Manager

**Menu** : Tools > Macro > VBA Manager

**Command** : VBAMAN

## Function Description:



Users could load, unload, save, create, embed, and extract VBA project by "VBA Manager".

## Relative Glossary:

### Drawing

Specify the active drawing.

**Embedded Project**

Specify the name of embedded project for the drawing. If the drawing does not contain an embedded project, it displays "None".

**Extract**

Move the embedded project out of the drawing and into a global project file. If you have not saved the project, it prompts to save it.

If you choose No, the project is extracted and assigned a temporary project name.

**Projects**

Display the current existing projects in the list, including their names and locations.

**Embed**

Embed the selected project in the specified drawing. A drawing could contain only one embedded project. Users could not embed a project in a drawing that already contains an embedded project.

**New**

Create a new project with the default new name.

**Save As**

Display the "Save As" dialog box, in which users could assign a new file name for selected project. This option is available when the selected project has not been saved.

**Load**

Display the "Load" dialog box, from which users could select the file they need and load it to project list. The VBALOAD command has the same function.

**Unload**

Unload the selected project in the list.

**Macros**

Display the "Macros" dialog box, in which users could run, edit or delete a VBA macro.

**Visual Basic Editor**

Display the Visual Basic Editor dialog box, from which users could edit project codes, forms and references, as well they could debug and run projects from it.

Online URL: <https://www.gstarcad.com.my/knowledge/article/vbaman-command-2420.html>