

## **WMFIN command**

2442 GstarCAD MY /KW August 25, 2021 [CAD Commands](#) 0 1259

The **WMFIN** command is used to import windows metafiles.

### **Command Access:**

**Menu** : Insert > Windows Metafiles

**Command** : WMFIN

### **Command Prompts:**

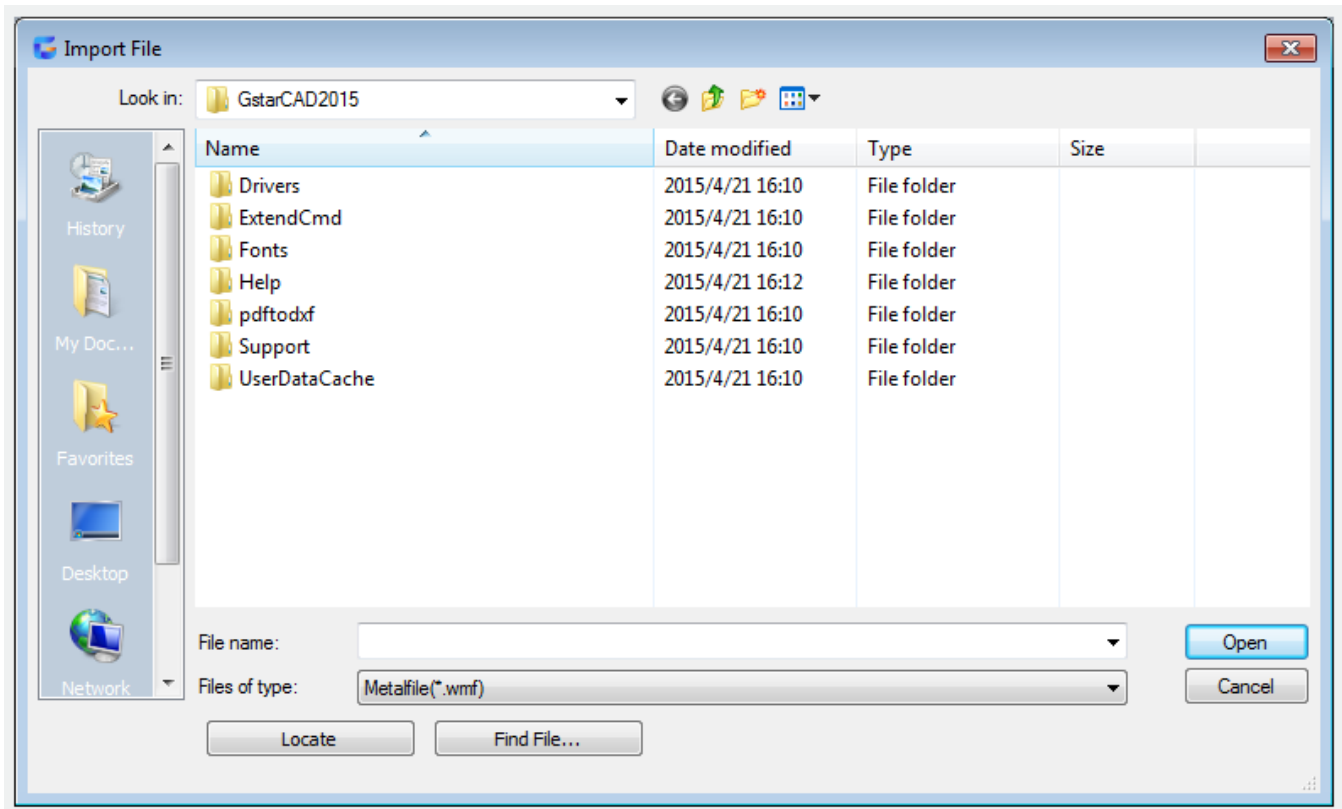
Unit: unitless convert: 1.0000

Specify insertion point or [Basepoint/Scale/X/Y/Z/Rotate]:

Enter X scale factor, specify opposite corner, or [Corner/XYZ]:

Enter Y scale factor : Specify rotation angle <0>:

### **Function Description:**



The WMF file could contain vector and raster information, but it could only export vector information. It could be inserted as block reference, the size and print style could be modified without losing resolution.

### Relative Glossary:

**Insertion point** : Insert the copy of metafile and its basepoint to the insertion point.

**X** : Specify scale factors for X and Y.

**Corner** : Specify a rectangle by the insertion point and the opposite corner point, at the same time define the X and Y scale factors. The length and width define the X and Y scale factors. The insertion point is the first corner point of rectangle. The rotation angle could set the angle of WMF file.

**XYZ** : Scale WMF file in X, Y and Z directions. The rotation angle could set the angle of WMF file.

**Scale :** Specify scale factor for X, Y, Z axis. The Z axis scale factor is the absolute value for specified scale factor.

**X :** Specify X scale factor.

**Y :** Specify Y scale factor.

**Z :** Specify Z scale factor.

**Rotate :** Specify insertion angle of WMF file.

Online URL: <https://www.gstarcad.com.my/knowledge/article/wmfin-command-2442.html>