

# WMFOUT command

2443 GstarCAD MY /KW August 25, 2021 [CAD Commands](#) 0 1134

The WMFOUT command is used to save objects as Windows metafiles.

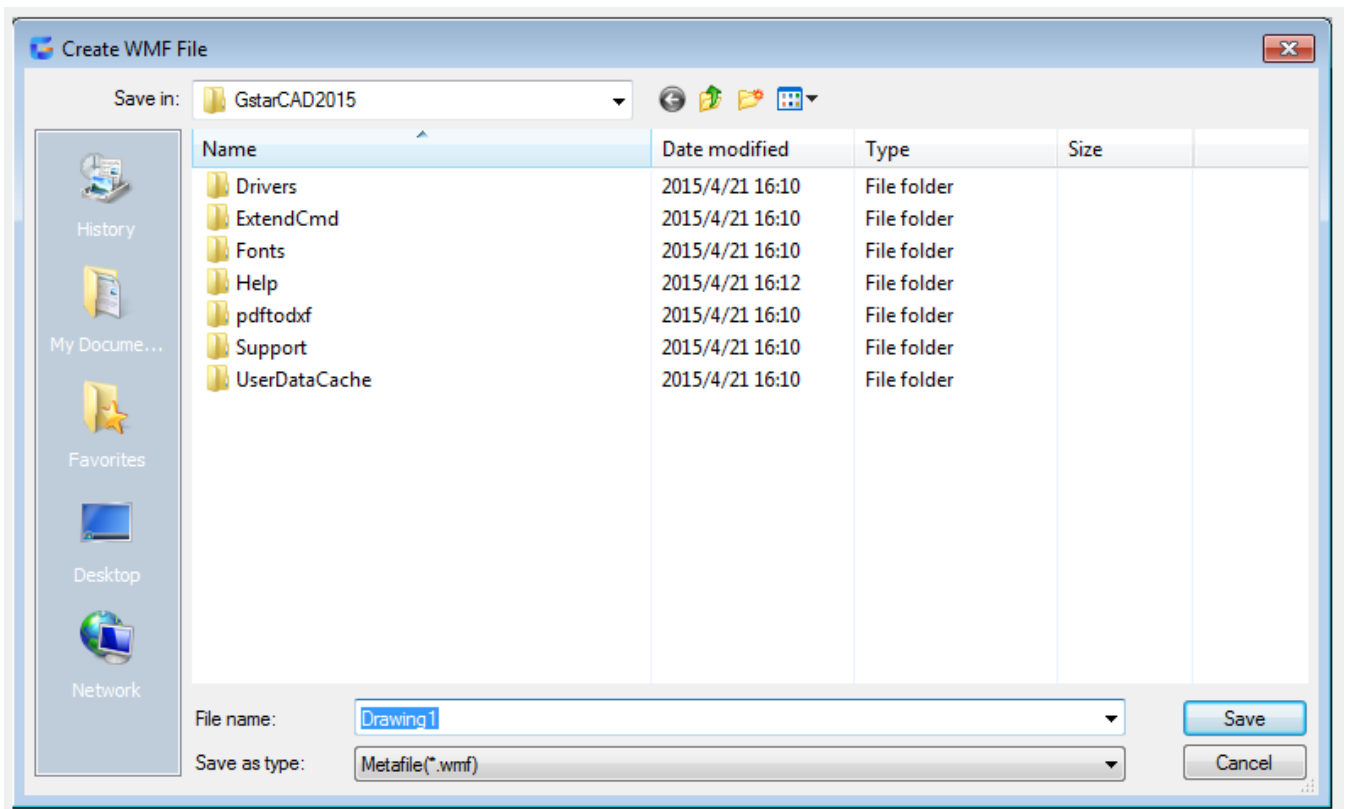
## Command Access:

**Command :** WMFOUT

## Command Prompts:

Select object:

## Function Description:



Online URL: <https://www.gstarcad.com.my/knowledge/article/wmfout-command-2443.html>