

## **XLIST command**

2448 GstarCAD MY /KW August 25, 2021 [CAD Commands](#) 0 1065

The **XLIST** command is used to list the type, block name, layer name, color and linetype of a nested object in a block or an xref.

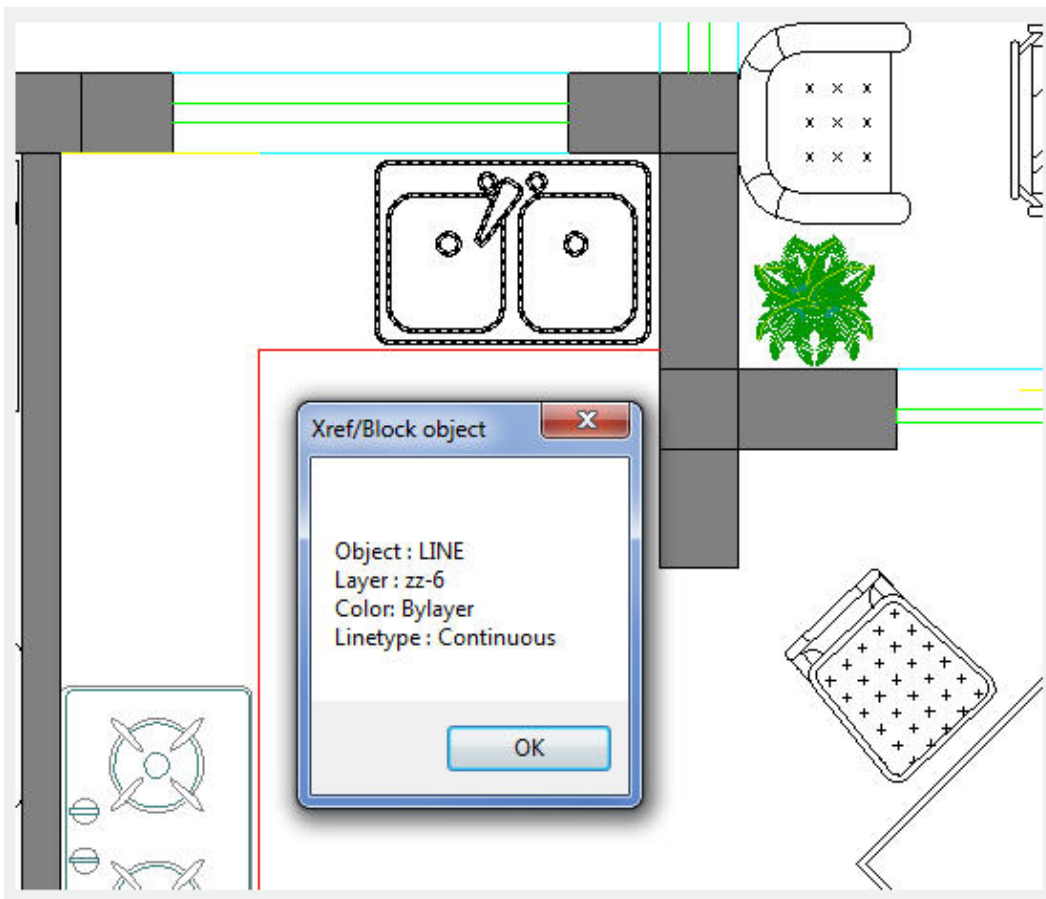
**Command Access :**

**Command Entry :** XLIST

**Menu :** Express>Blocks>List Xref/Block Properties

Command line prompts as follows :

**Select nested xref or block object to list :** Use an object selection method.



After selecting an external reference, the "Xref/Block object" dialog box will display attributes of specified blocks and xref, including object type, block name, color and linetype.

Online URL: <https://www.gstarcad.com.my/knowledge/article/xlist-command-2448.html>