

Use a Wizard to Start a Drawing

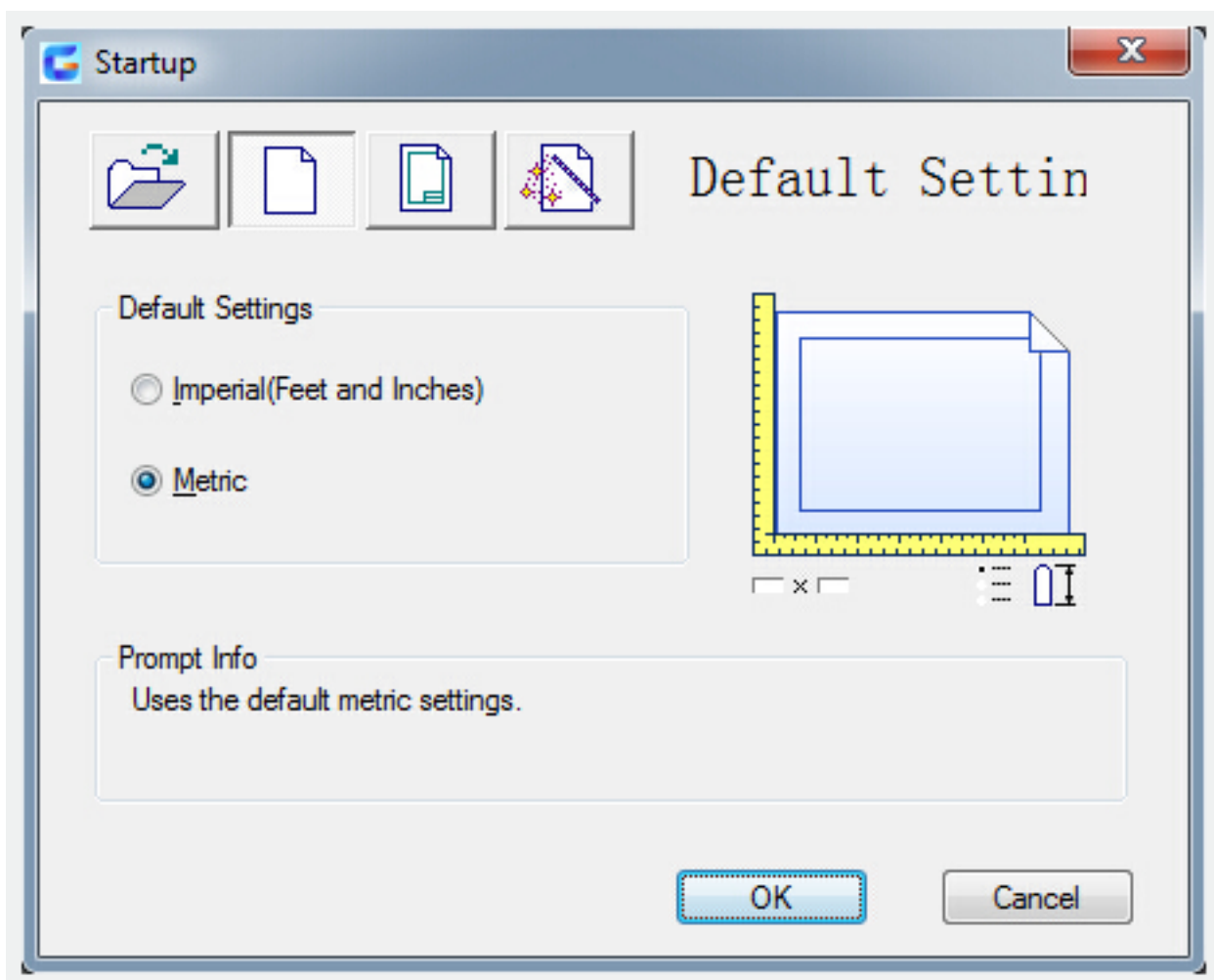
2457 GstarCAD MY /KW August 27, 2021 [Getting started](#), [Setting / Configuration](#) 0 1422

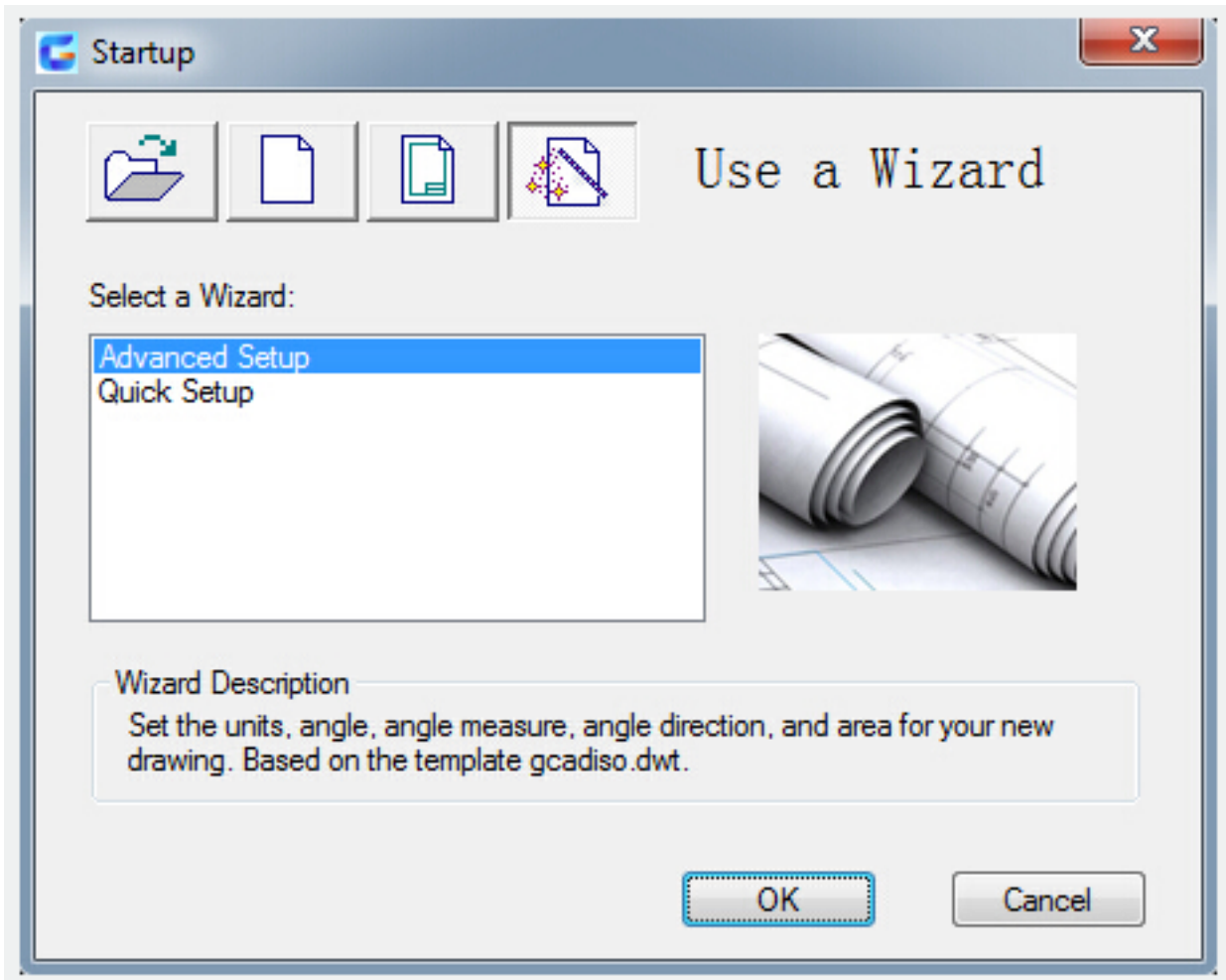
If you use the setup wizard, it will guide you step by step through the basic drawing settings.

In the wizard there are two options, which help you with setting up a drawing:

Quick Setup: You can define the measurement units, the precision, with which the units are displayed and the limits of the grids.

Advanced Setup: In addition to the functions of the quick option above, you can define angle settings like the style of the measurement units, precision, direction, and orientation. You can find these wizards in the [STARTUP](#) dialog box.





Online URL: <https://www.gstarcad.com.my/knowledge/article/use-a-wizard-to-start-a-drawing-2457.html>