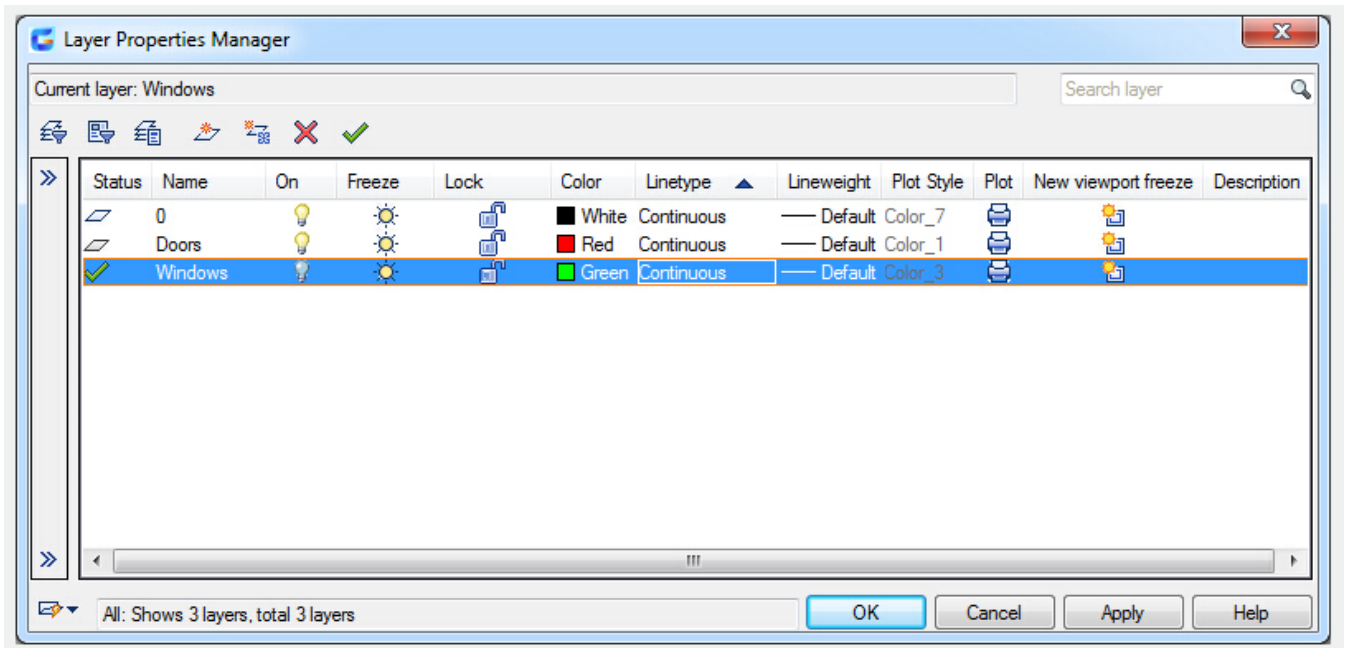


Change Layer Settings and Layer Properties

2475 GstarCAD MY /KW April 15, 2022 [Workflow](#) 0 1387

The name of a layer and any properties like [COLOR](#) and [LINETYPE](#) can be changed, and objects can be moved from one layer to another.

By clicking the icons in the Layer Properties Manager ([LAYER](#)) and in the Layer control on the Layers toolbar, you can change the settings of Layer properties.



Undo Changes to Layer Settings

If you need to undo changes you made to layer settings, you can use the Layer Previous function. Layer Previous can undo the changes and restore the original layer settings.

The following changes can not be undone with Layer Previous:

- Renamed layers: restores the original properties but not the original layer name.
- Deleted layers: If you delete or purge a layer, using Layer Previous does not restore it.
- Added layers: If you add a new layer to a drawing, using Layer Previous does not remove it.

Related tutorial video:

- [Overview of layer](#) 00:20

- [Line command](#) 00:37
- [Draw Lines](#) 00:37
- [Properties command](#) 00:54
- [Propertiesclose command](#) 00:54
- [LAYISO command](#) 01:10
- [LAYUNISO command](#) 01:16
- [LAYER command](#) 01:20
- [Change layer settings and layer properties](#) 01:21
- [LAYMCUR command](#) 02:04
- [LAYDEL command](#) 02:48

Above video sources from [TUTORIAL - GETTING STARTED WITH GSTARCAD](#), enrol now for free.

Online URL:

<https://www.gstarcad.com.my/knowledge/article/change-layer-settings-and-layer-properties-2475.html>