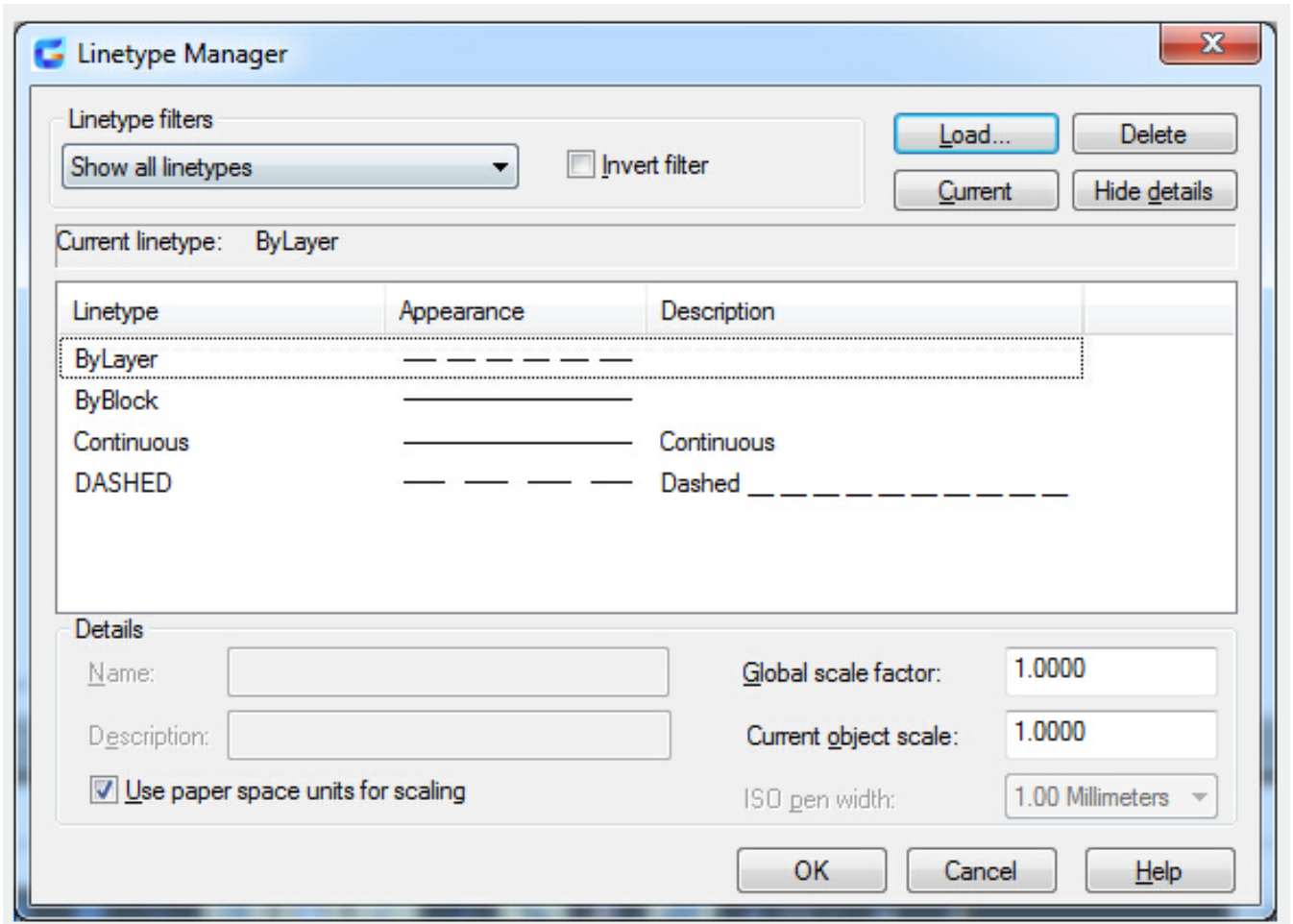


Control Linetype Scale

2484 GstarCAD MY /KW April 14, 2022 [Workflow](#) 0 2040

The same [LINETYPE](#) can be changed to different scales by changing the linetype scale factor globally or individually for each object.



By default, global scale factor and current object scales are set to 1.0. You will see the Global Scale Factor and the Current Object Scale in the Linetype Manager.

- The linetype scale is changed globally for both new and existing objects by the Global Scale Factor value which can be set by the [LTSCALE](#) system variable.
- The linetype scale for new objects is controlled by the Current Object Scale value which can be set by the [CELTSKALE](#) system variable .

The CELTSKALE value is multiplied by the LTSCALE value to control the displayed linetype scale of object. You can change the linetype scale factor of objects by the Properties palette.

Related tutorial video:

- [Status bar related setting](#) 00:23
- [Line command](#) 00:33
- [Polar](#) 00:39
- [Edit objects + grips](#) 00:56
- [Grips System variable](#) 00:56
- [Use grips to edit objects](#) 00:56
- [Properties command](#) 01:16
- [Display and change the properties of objects](#) 01:16
- [Linetype command](#) 01:26
- [-Linetype command](#) 01:26
- [Control Line Scale](#) 01:26
- [Color command](#) 01:33
- [Change the color of an object](#) 01:33
- [Set the current color](#) 01:33
- [Polyline command](#) 02:00
- [Fillet command](#) 02:40
- [Draw Rectangles and Polygons](#) 03:01
- [Revcloud command](#) 03:10
- [Donut command](#) 03:14
- [Draw Donuts](#) 03:14
- [Edit objects + grips](#) 03:23
- [Grips System variable](#) 03:23
- [Use grips to edit objects](#) 03:23
- [ARC command](#) 03:54
- [How to draw an arc with specific arc length](#) 03:54
- [Circle command](#) 04:42
- [Concentric circle command](#) 04:54
- [Properties command](#) 05:54
- [Mirror command](#) 05:16

Above video sources from [TUTORIAL - GETTING STARTED WITH GSTARCAD](#), enrol now for free.

Online URL: <https://www.gstarcad.com.my/knowledge/article/control-linetype-scale-2484.html>