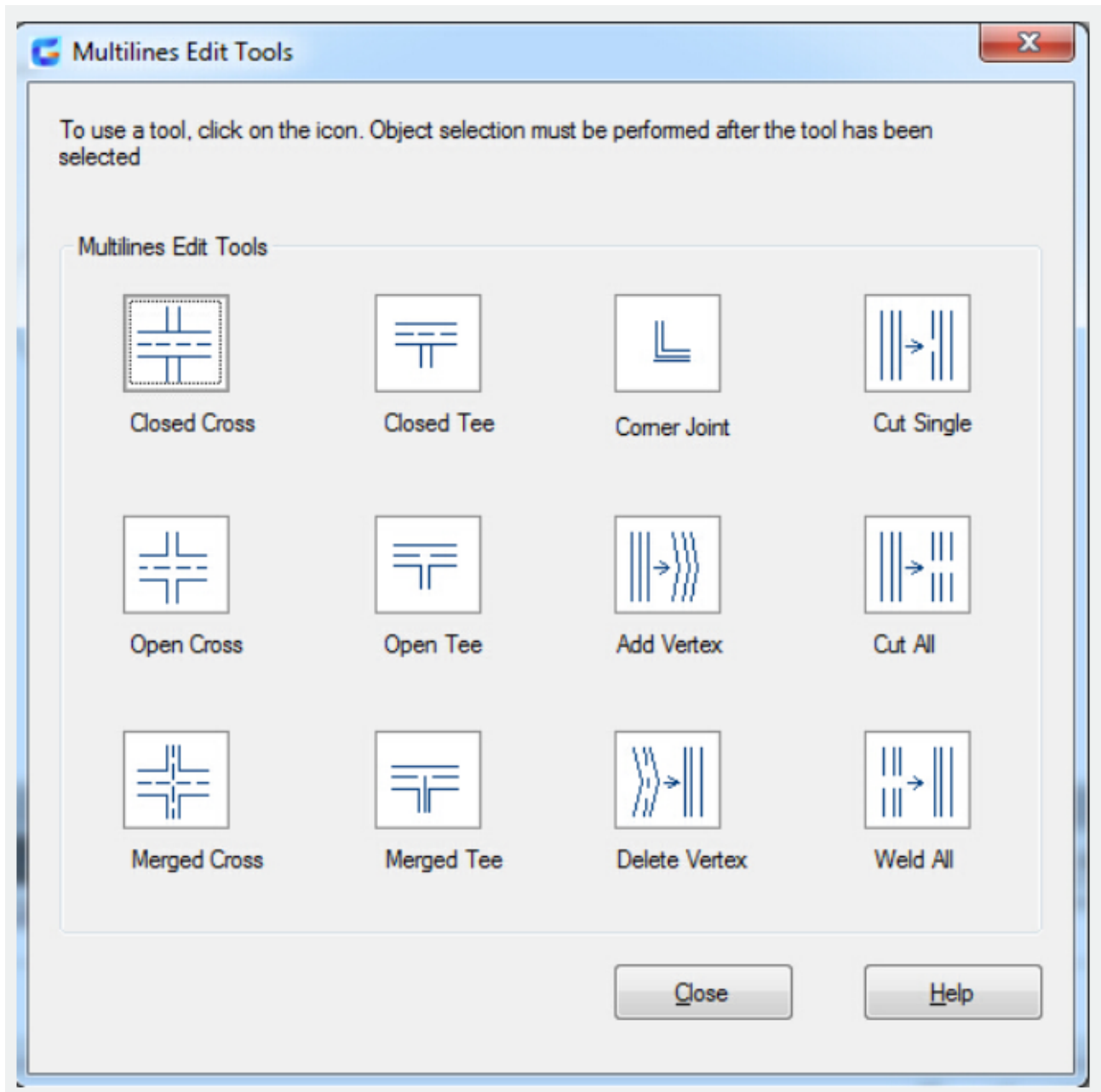


Modify Multiline

2552 GstarCAD MY /KW November 9, 2021 [Workflow](#) 0 964

Multiline is a kind of special object. You can modify it by [MLEEDIT](#) , but can not modify it by fillet, chamfer and some other function.



Edit Multiline Styles

To change the properties , end caps and the background fill of subsequently created multiline, you can edit multiline styles using the command [MLSTYLE](#)

Online URL: <https://www.gstarcad.com.my/knowledge/article/modify-multiline-2552.html>