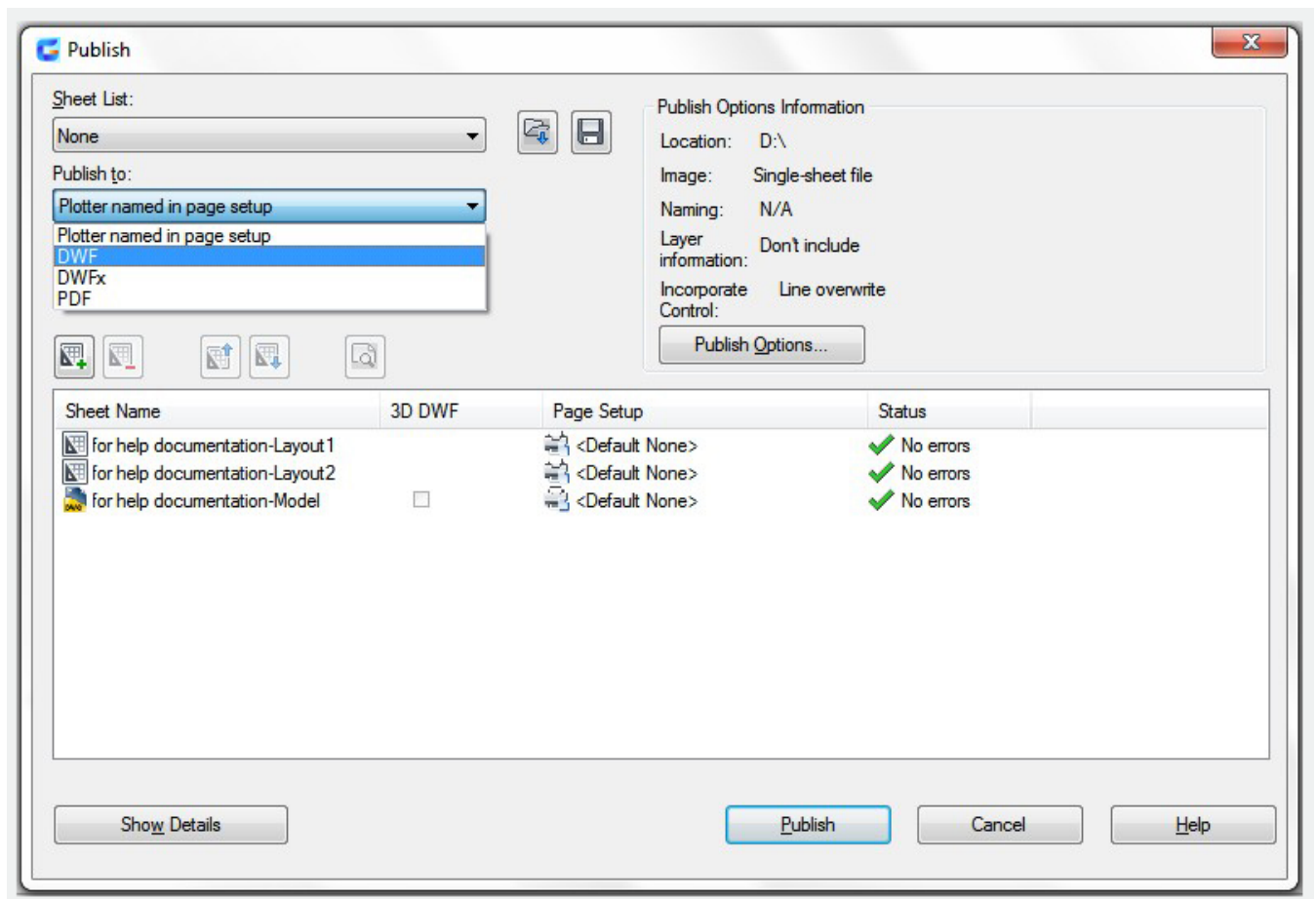


Publish Drawings

2581 GstarCAD MY /KW November 9, 2021 [Workflow](#) 0 747

You can use Publishing ([PUBLISH](#)) to create a paper drawing set or an electronic drawing set.

You can set options for publishing, such as output file location, DWF type, multi sheet DWF name options, and whether or not to include layer information. You can also decide what types of information to reveal in your published DWF files



Online URL: <https://www.gstarcad.com.my/knowledge/article/publish-drawings-2581.html>