

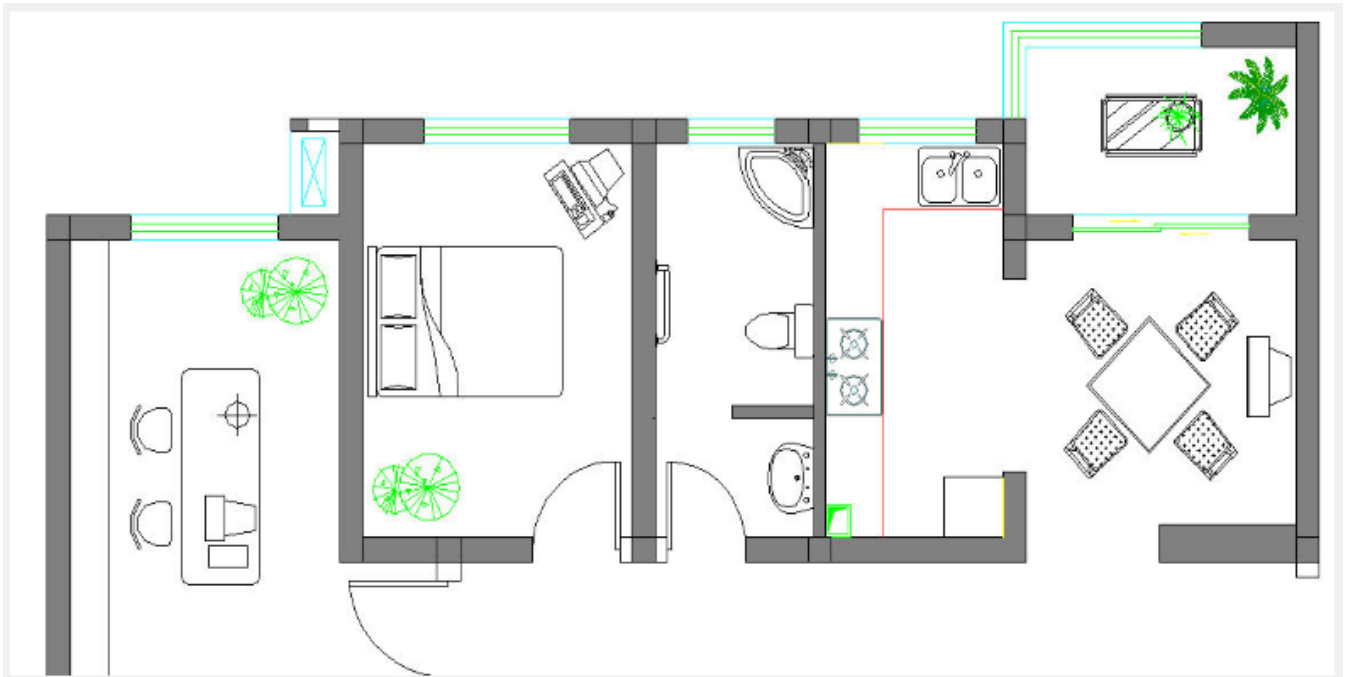
# Convert BLOCK to XREF

2620 GstarCAD MY /KW November 10, 2021 [Workflow](#) 0 1410

Replace all instances of a standard block with an xref. Unbind xrefs that are bound.

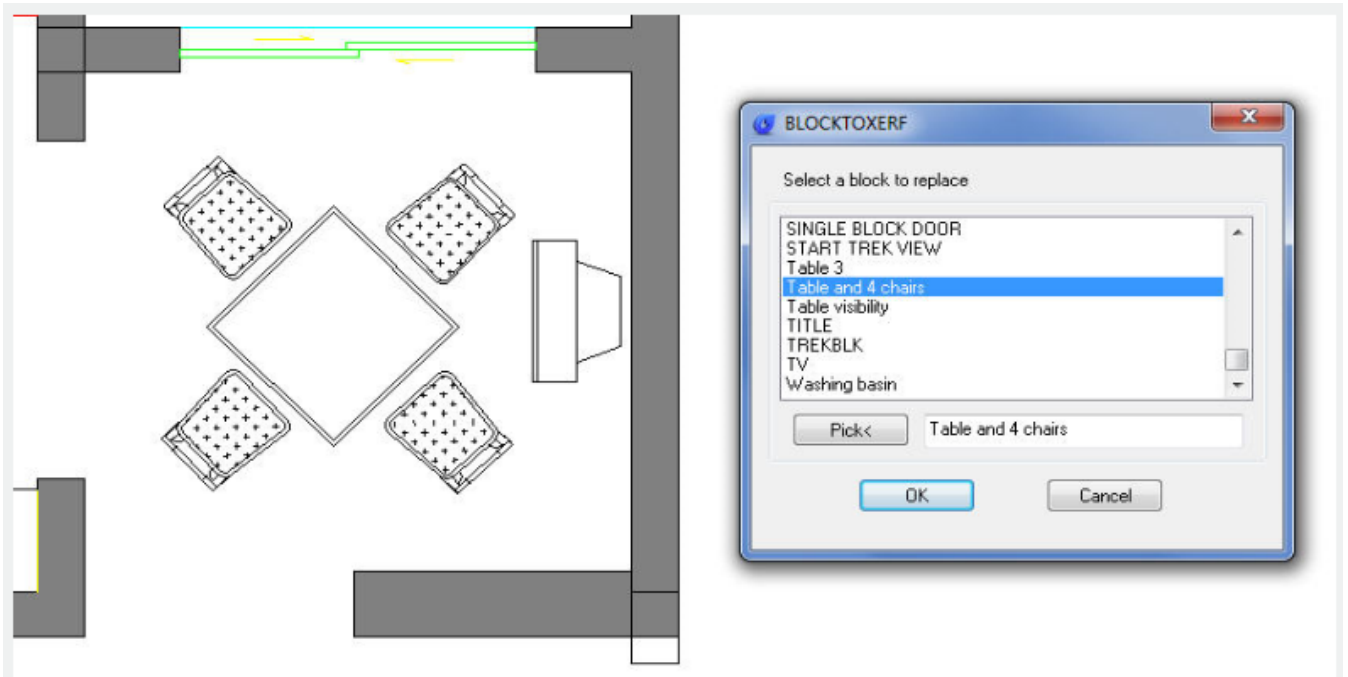
Menu: Express>Blocks>Convert Block to Xref

Command Entry: BLOCKTOXREF

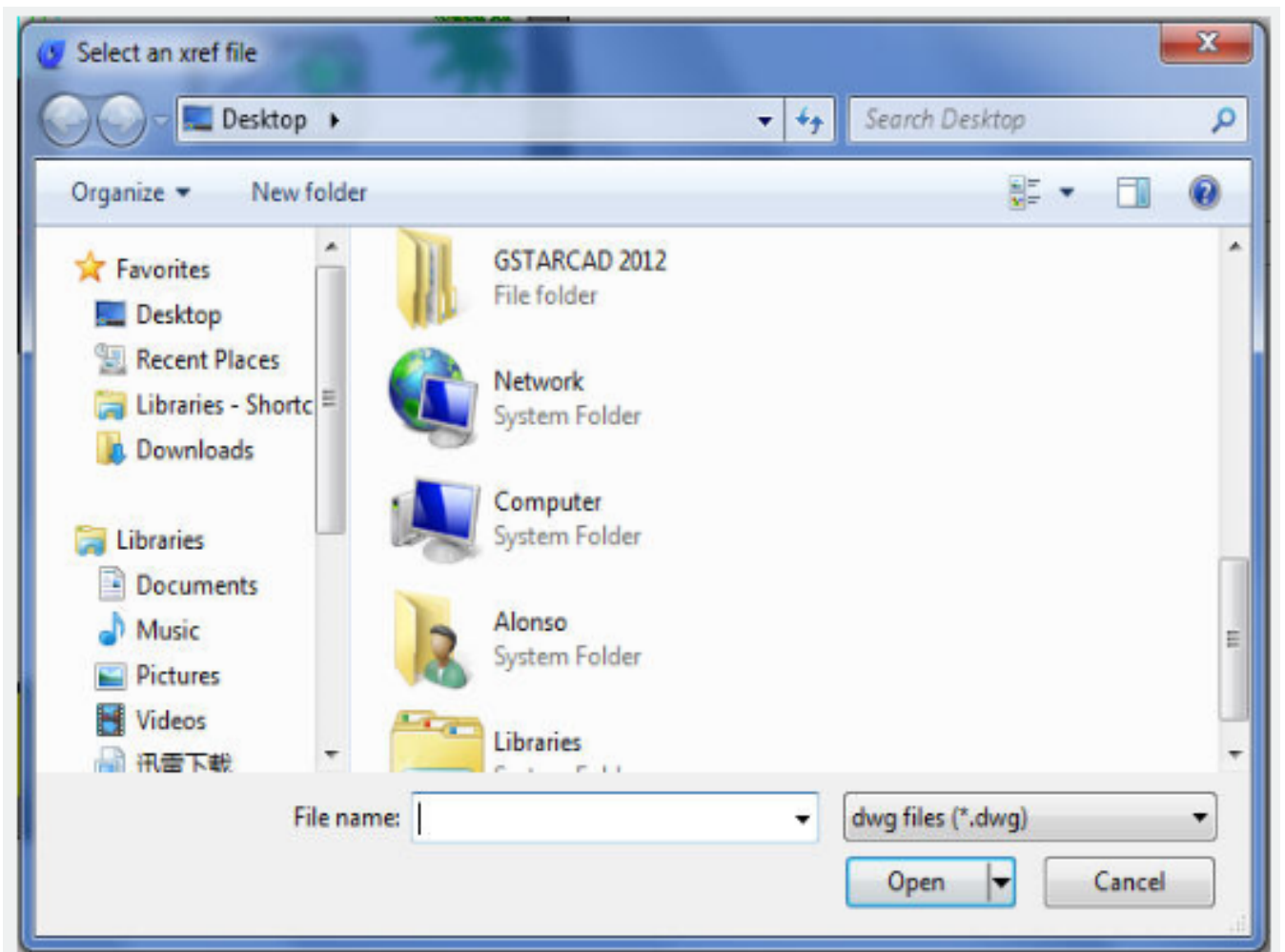


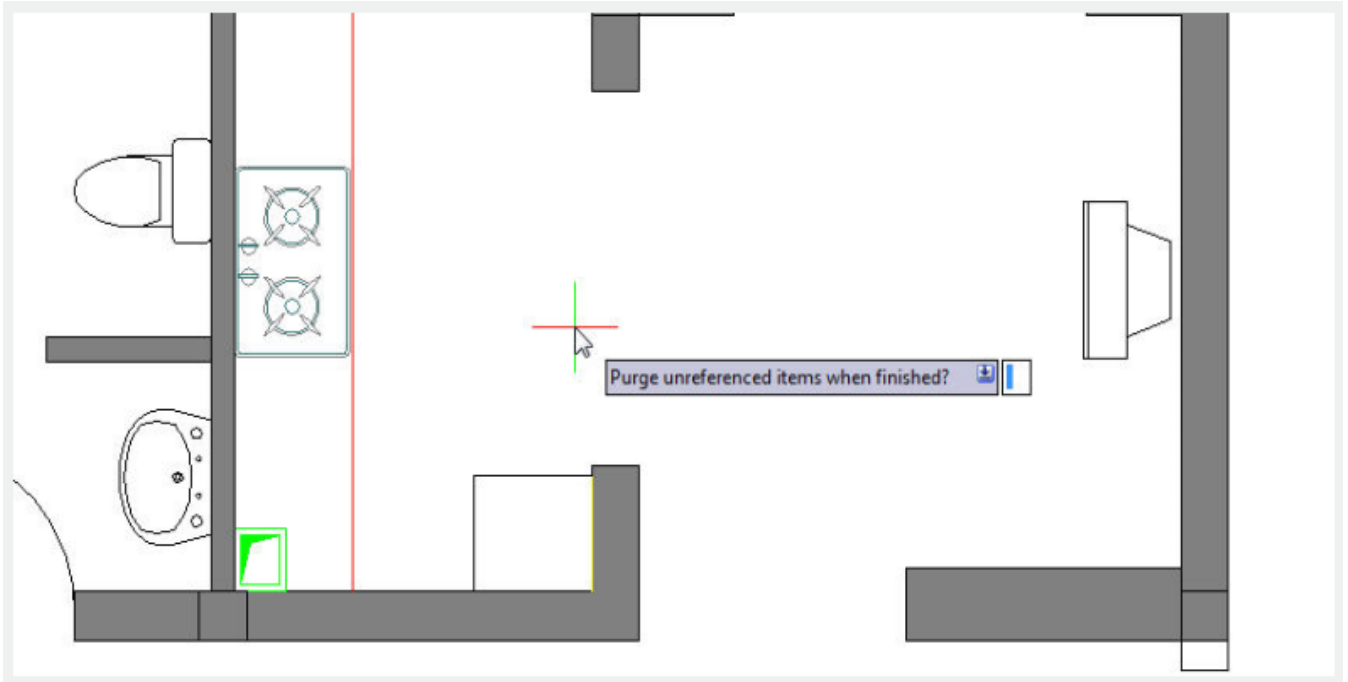
BLOCKTOXREF searches the entire drawing for references to a specified block name and replaces them with an [XREF](#) that you specify. You can have the unreferenced block purged when done.

In BLOCKTOXREF dialog box. Select a block to replace: Table and 4 chairs. Then select: OK



In Select a Xref file. Select the Xref you want. Then select: open





Purge unreferenced items when finished? Yes/No

Online URL: <https://www.gstarcad.com.my/knowledge/article/convert-block-to-xref-2620.html>