

# Statistics Summation

2626 GstarCAD MY /KW November 10, 2021 [Workflow](#) 0 1179

This function sums up selected text or mtext.

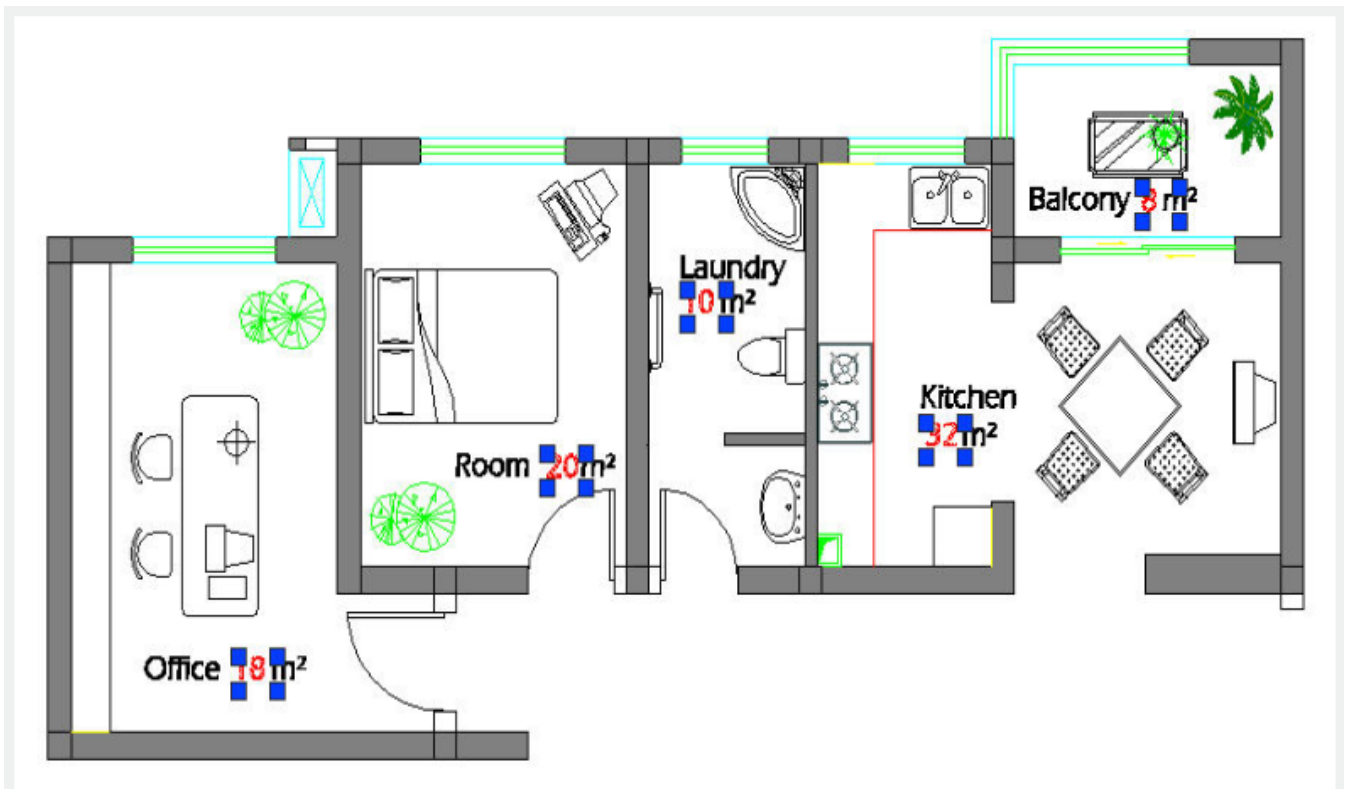
The selected text can not contain any other characters behind the number and the selected mtext can only contain a row of numerical values without blank spaces. Figures with prefix can also make statistics Summation and the system will summate them by different prefixes.

**Menu :** Text>Statistics Summation

**Command Entry :** KLL01

Start the command and the command line prompts as follows:

Select objects: Select Text or Mtext numerical value



In the Statistics dialog box, you can see the cumulative sum from the selected text numerical values. You can also re-select, replace, copy text numerical value again plus fill-in (show) the cumulative sum in any point of your current drawing.

