

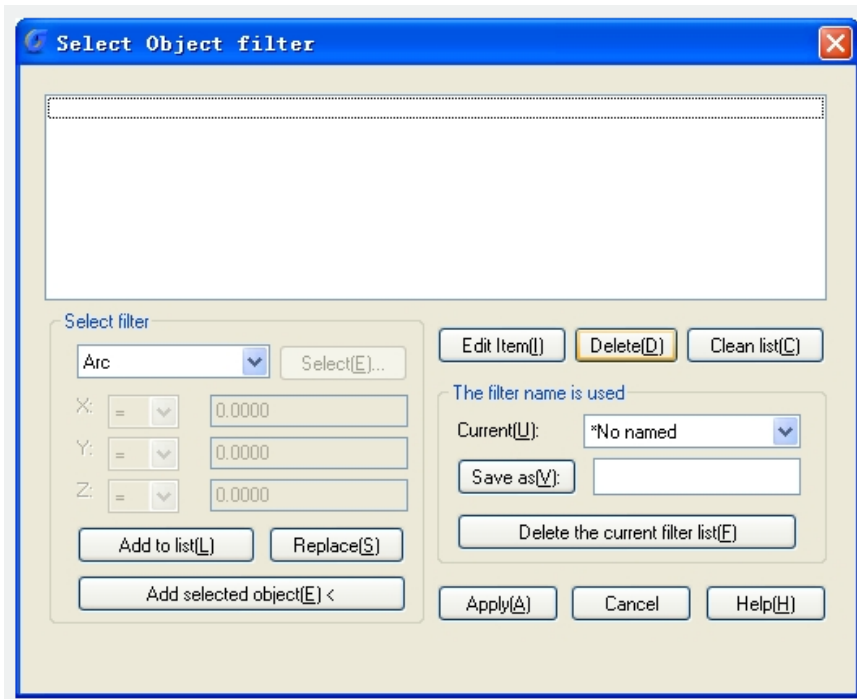
Select Filter

2665 GstarCAD MY /KW November 15, 2021 [Workflow](#) 0 971

Select, edit, and name filters for object selection.

Menu : Express>Selection>Select Filter

Command Entry : Filter



1. X, Y, Z Parameters

Defines additional filter parameters depending on the object.

In the filter parameters, you can use relative operators such as < (less than) or > (greater than).

2. Select

Displays a dialog box listing all items of the specified type in the drawing. Select the items to filter.

3. Add to List

Adds the current Select Filter property to the filter list. Filter properties that you add to the unnamed filter remain available during the current work session unless you manually delete them.

4. Replace

Replaces the filter property selected in the filter property list with the one displayed in Select Filter.

5. Add Selected Object

Adds one selected object in the drawing to the filter list.

6. Edit Item

Moves the selected filter property into the Select Filter area for editing. To edit a filter property, select it

and choose Edit Item. Edit the filter property and choose Substitute. The edited filter replaces the selected filter property.

7. Delete

Deletes a selected filter property from the current filter.

8. Clear List

Deletes all the listed properties from the current filter.

9. The filter name is used

Displays, saves, and deletes filters.

10. Current

Displays saved filters. Select a filter list to make it current. The named filter and its list of properties are loaded from the default file, filter.nfl.

11. Save As

Saves a filter and its list of properties. The filter is saved in the filter.nfl file. Names can contain up to 18 characters.

12. Delete Current Filter List

Deletes a filter and all its properties from the default filter file.

13. Apply

Exits the dialog box and displays the Select Objects prompt, where you create a selection set. The current filter is used on the objects you select.

Online URL: <https://www.gstarcad.com.my/knowledge/article/select-filter-2665.html>