

# Drawing Lock

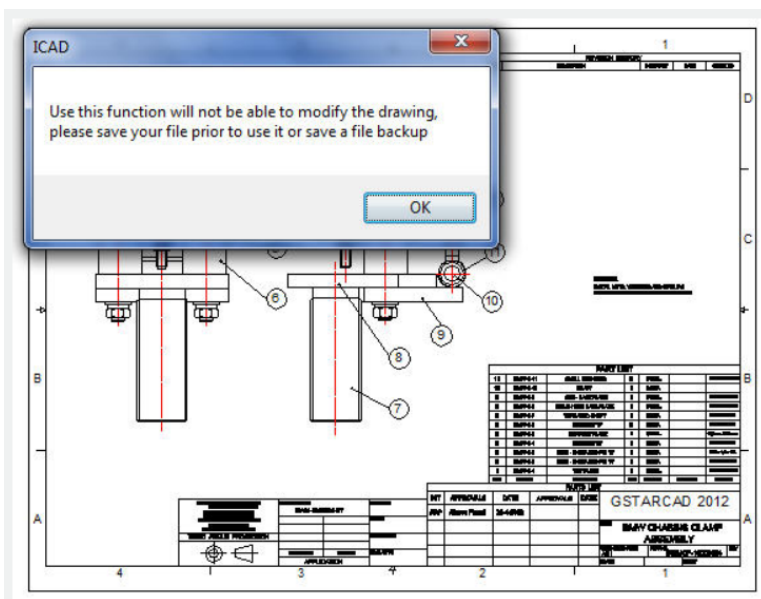
2712 GstarCAD MY /KW December 3, 2021 [Workflow](#) 0 856

Sometimes a designer sends drawings to other people, but doesn't want others to modify the drawings. The "Drawing Lock" function can turn the drawing into a whole block. You can't explode it or modify the objects of the original drawing. It is a good way to prevent others from modifying the drawing.

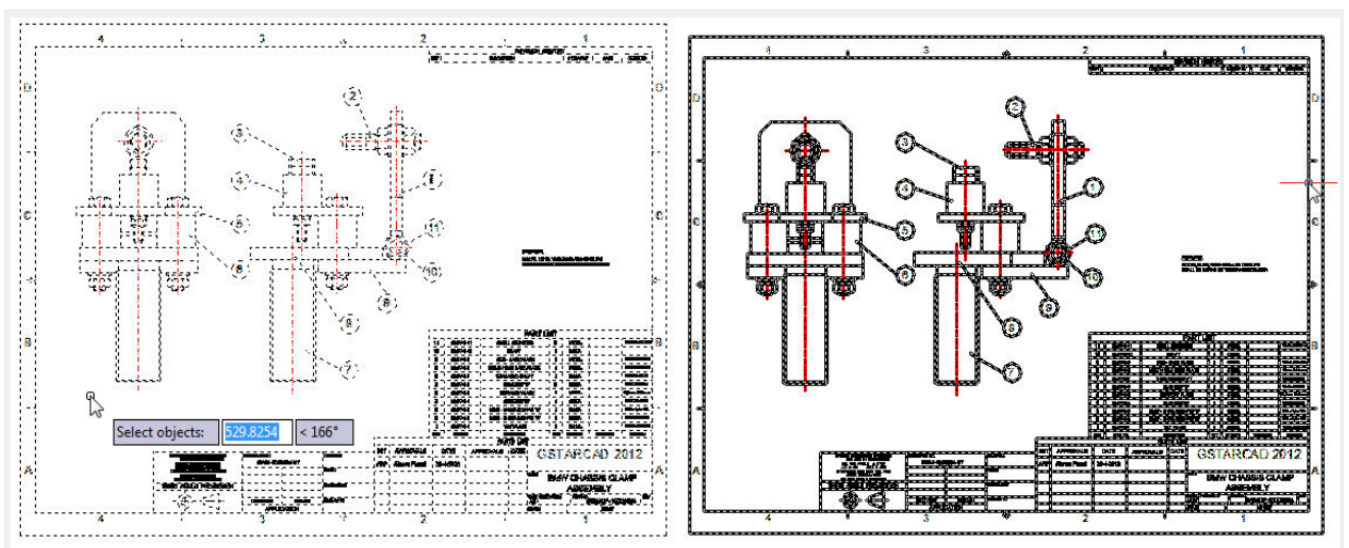
**Menu :** Express tools>Drawing Tools>Drawing Lock

**Command Entry :** LOCKUP

Once the command is started, the follow wizard will be displayed:



Select objects: Select all the objects in the current drawing to be locked and press Enter.



Online URL: <https://www.gstarcad.com.my/knowledge/article/drawing-lock-2712.html>