

Batch Print

2724 GstarCAD MY /KW December 7, 2021 [Workflow](#) 0 1557

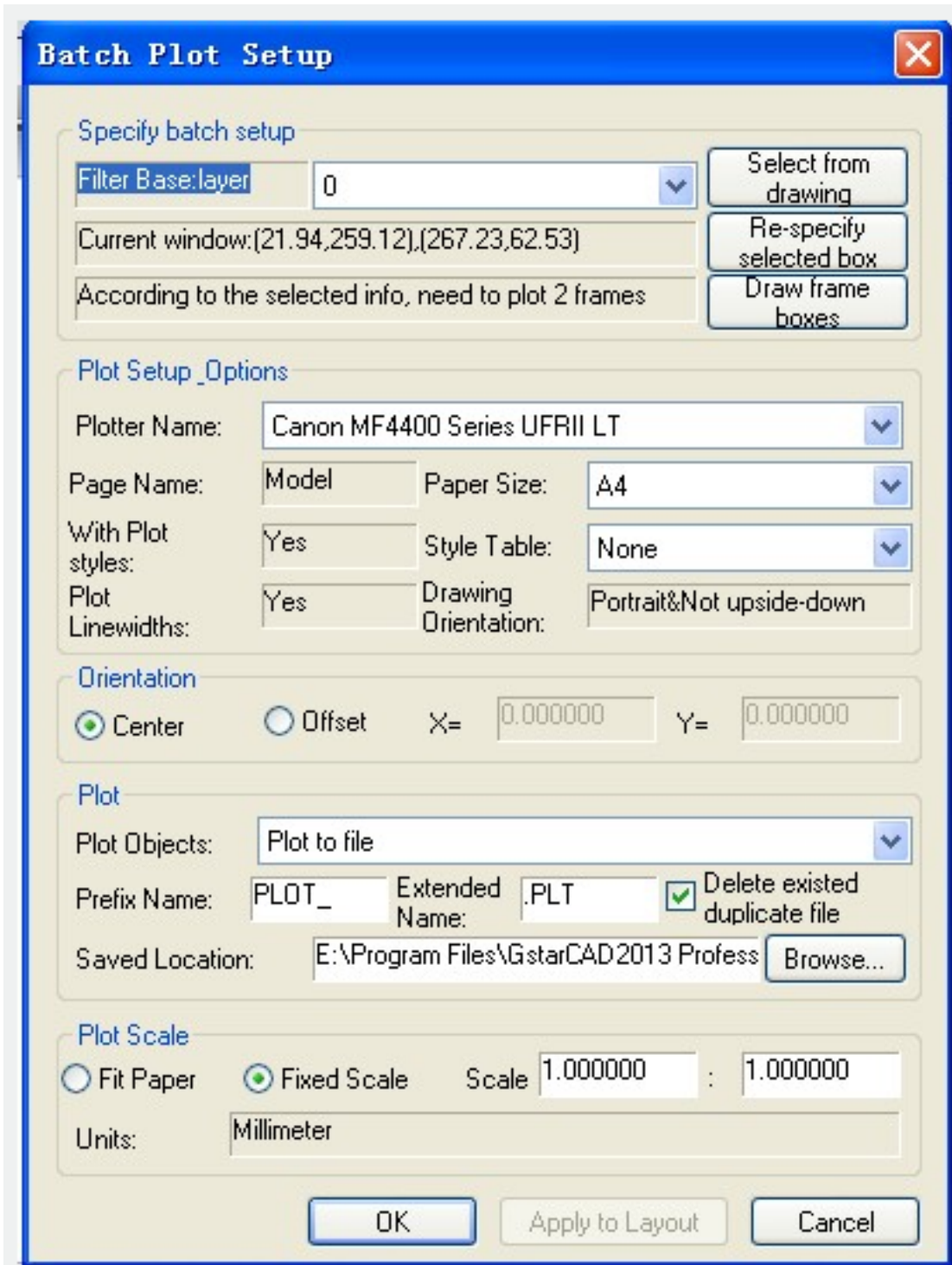
Batch print drawings with the same drawing frame attribute.

Menu : Express tools>Plot Tool>Batch Print

Command Entry : BP

Operation steps:

1. Start the command.
2. Specify the type of frame, you can select Layer/ Block/ Polyline so that the system can recognize the frame.
3. Corner select the frame you want to print, you will get a dialog box as below.



4. Set the print Parameters, click "OK" to execute bath print.

Online URL: <https://www.gstarcad.com.my/knowledge/article/batch-print-2724.html>